





- Two Bedrooms
- Great Location
- Viewing Recommended
- Ideal First Time Buuy
- Semi-Detached House
- Close To Local Amenities
- Gardens and Driveway





Offered for sale with no upper chain this two bedroom semi detached property is the ideal first time buy.

The property is located within a desirable residential area, only a short walk from the Metro station and with shops, a supermarket and the train station close to hand too!

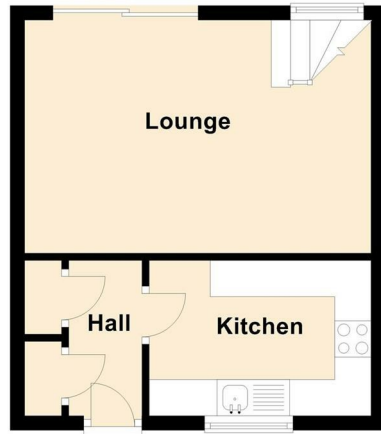
Briefly comprising to the ground floor:- entrance hallway, kitchen and lounge with patio doors leading out to the rear garden. To the first floor there are two bedrooms and a bathroom with a shower over the bath. The property also benefits from gas central heating and double glazing.

Externally there are gardens to the front and rear along with a driveway providing off street parking for a number of cars.

Early viewings come highly recommended. For more information and to book your viewing please call our Low Fell sales team.



Ground Floor



First Floor



The difference between house and home

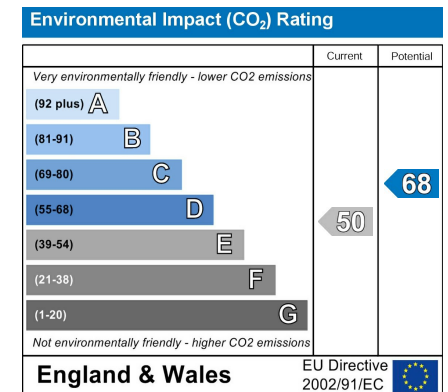
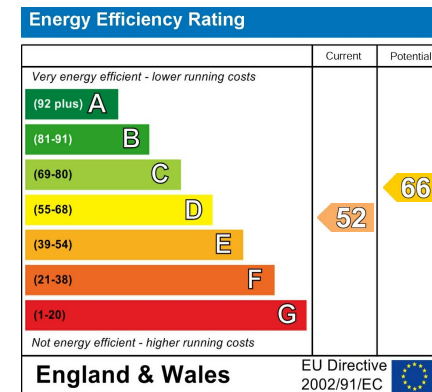
You may download, store and use the material for your own personal use and research. You may not republish, retransmit, redistribute or otherwise make the material available to any party or make the same available on any website, online service or bulletin board of your own or of any other party or make the same available in hard copy or in any other media without the website owner's express prior written consent. The website owner's copyright must remain on all reproductions of material taken from this website.

Lounge 15'7" x 10'5" (4.76 x 3.20)

Kitchen 10'0" x 7'0" (3.07 x 2.14)

Bedroom One 9'4" x 11'6" (2.85 x 3.52)

Bedroom Two 8'4" x 9'0" (2.55 x 2.75)



Gosforth 0191 236 2070
 Newcastle 0191 284 4050
 Forest Hall 0191 605 3134
 High Heaton 0191 270 1122
 Low Fell 0191 487 0800
 Tynemouth 0191 257 2000
 Whitley Bay 0191 251 3000
 Property Management Centre 0191 236 2680



www.janforsterstates.com

