



746 sq
ft



2



1



2

REDBRIK
ESTATE AGENTS



Helping you find
your home at...

Foljambe Road, Chesterfield
Offers In Region Of £110,000

A well maintained and neutrally decorated two bedroom bay window end terrace house.

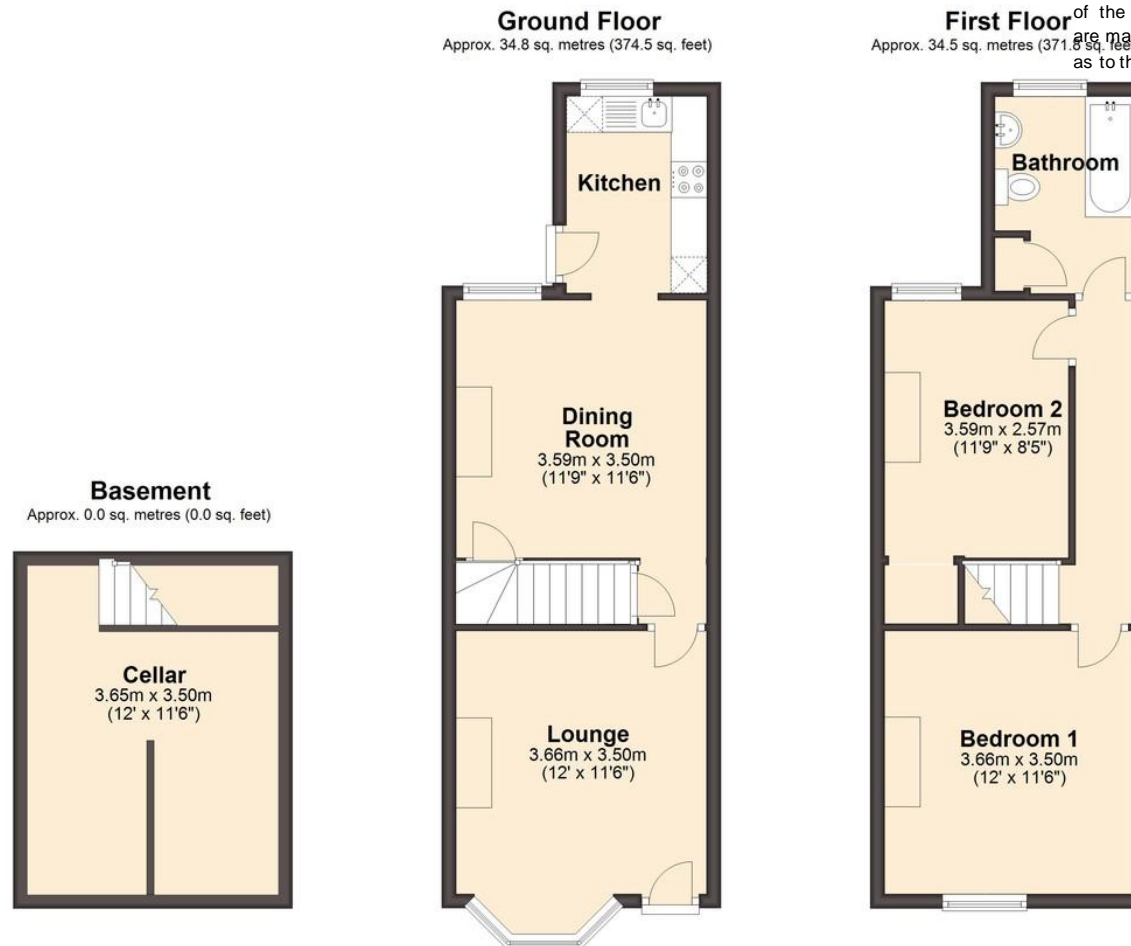
- Two Bedroom End Terrace House
- Fitted Kitchen
- Spacious Bay Window Lounge
- Separate Dining Room
- No Onward Chain
- Modern Fitted Bathroom With White Suite
- Low Maintenance Enclosed Rear Garden
- Ideally Located
- GCH, uPVC Double Glazing, Cellar
- Energy Rating TBC.

Of possible interest to first time buyers or investors alike the property is ideally suited to modern living providing well ordered, flexible accommodation set across two levels and a low maintenance enclosed rear garden. Ideally located a short walk from Queens Park, Chesterfield Town Centre and the many bars, shops and restaurants on Chatsworth Road. Available with no onward chain.





We endeavour to make these particulars as accurate as possible, but they should only be used as guidance and they do not constitute any part of the contract. All measurements are approximate and no guarantees are made to the services, heating systems, appliances (if any) or fittings as to their working order and no warranty can be given or implied.



Total area: approx. 69.3 sq. metres (746.3 sq. feet)

You may download, store and use this material for your own personal use and research. You may not republish, retransmit, redistribute or otherwise make the material available to any party or make the same available on any website, on or off line service or hard copy without the website owner's express written consent. The website owner's copyright must remain on all reproductions of material taken from this website.

