



redrose

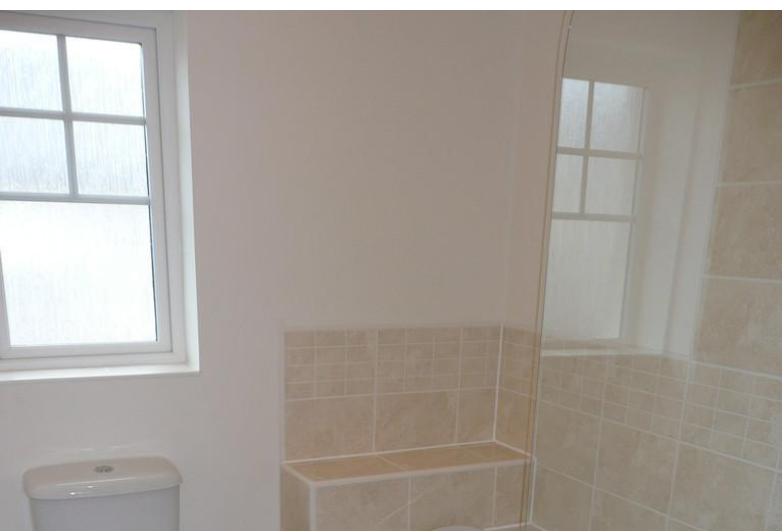
8 Grenadier Walk

Buckshaw Village, Chorley, PR7 7EF

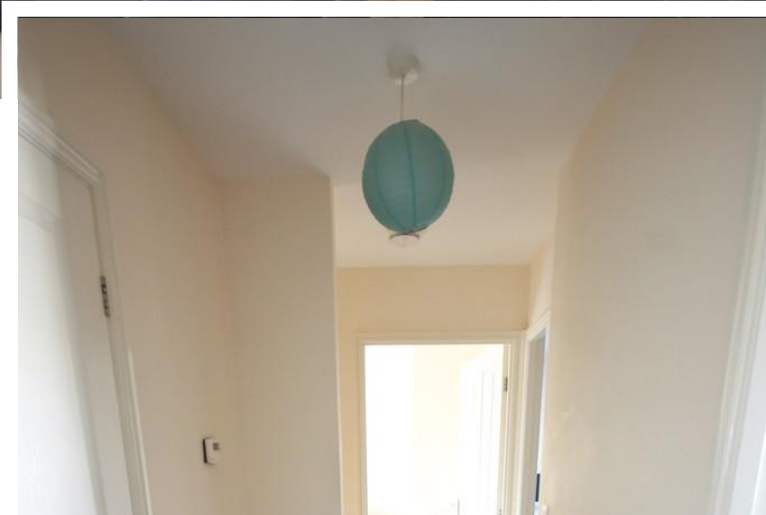
- DETACHED
- NEW CARPETS
- SEPARATE KITCHEN
- GARAGE

£575 pcm

EPC Rating '78'



8 Grenadier Walk, Buckshaw Village, Chorley, Lancashire, PR7 7EF



Property Description

*** CHRISTMAS OFFER! £100 OFF FIRST MONTHS RENT!

A SUPERB COACH HOUSE STYLE APARTMENT WITH YOUR OWN FRONT DOOR LOCATED WITHIN THE PICTURESQUE AREA OF GRENADIER WALK ON BUCKSHAW VILLAGE.

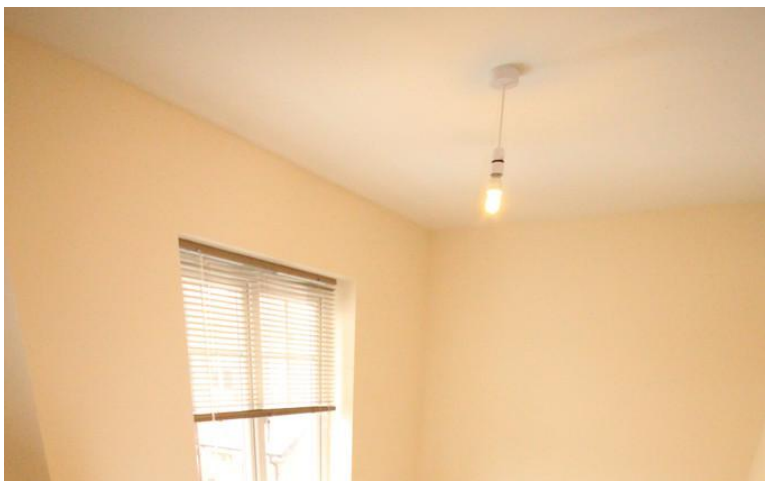
This lovely property briefly comprises of an entrance staircase leading up to the communal hallway, a generous sized lounge, separate kitchen with modern fitted units integrated appliances and white goods, two good sized bedrooms and a family sized bathroom with white three piece suite and shower over bath.

Externally this property boasts a good sized garage underneath with power and parking space in front, whilst also being located only a stones throw away from the park/play area, local schools shops and amenities.

THIS WONT BE AROUND FOR LONG! CALL TODAY TO VIEW!
01772 456558



Landlord Registration Number: landlord registration pending



%epcGraph_c_1_325%

Redrose
15 Barnes Wallis Way
Buckshaw Village
Chorley
Lancs

www.redrosepm.co.uk
lettings@redrosepm.co.uk
01772 456558

Agents Note: Whilst every care has been taken to prepare these sales particulars, they are for guidance purposes only. All measurements are approximate are for general guidance purposes only and whilst every care has been taken to ensure their accuracy, they should not be relied upon and potential buyers are advised to recheck the measurements