



**For Sale**



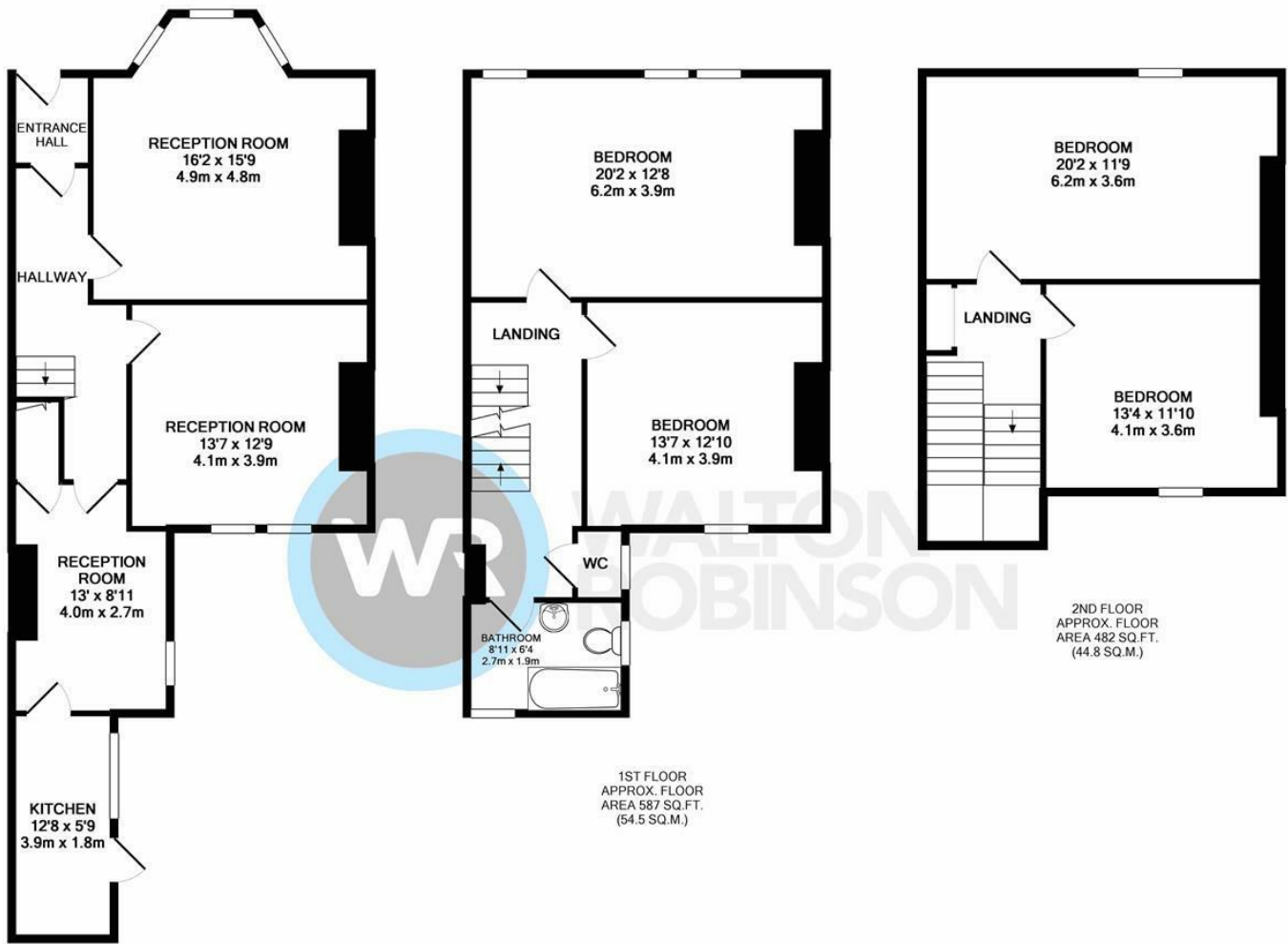
## 16 Churchill Gardens, Jesmond Vale NE2 1HB

Four bedroom mid-terraced house located in pleasant Jesmond Vale location. The property is set over three floors with two reception rooms, dining area and kitchen to the ground floor, large master bedroom, second bedroom, bathroom and WC to the first floor with two further bedrooms located on the second floor. There is a private rear yard and on street parking available. Priced to reflect the modernisation required.

- Terraced House
- Over Three Floors
- Four Bedrooms
- Two Reception Rooms
- Bathroom
- Additional WC
- Private Rear Yard
- On Street Parking
- Priced to Reflect Refurbishment Required
- EPC Rating D

**£285,000**

101 Percy Street, City Centre, Newcastle upon Tyne, NE1 7RY  
T: 0191 649 7008 | Email: [enquiries@waltonrobinson.com](mailto:enquiries@waltonrobinson.com) | [www.waltonrobinson.com](http://www.waltonrobinson.com)



GROUND FLOOR  
APPROX. FLOOR  
AREA 680 SQ.FT.  
(63.1 SQ.M.)

1ST FLOOR  
APPROX. FLOOR  
AREA 587 SQ.FT.  
(54.5 SQ.M.)

2ND FLOOR  
APPROX. FLOOR  
AREA 482 SQ.FT.  
(44.8 SQ.M.)

TOTAL APPROX. FLOOR AREA 1749 SQ.FT. (162.4 SQ.M.)  
Whilst every attempt has been made to ensure the accuracy of the floor plan contained here, measurements of doors, windows, rooms and any other items are approximate and no responsibility is taken for any error, omission, or mis-statement. This plan is for illustrative purposes only and should be used as such by any prospective purchaser. The services, systems and appliances shown have not been tested and no guarantee as to their operability or efficiency can be given  
Made with Metropix ©2019

