



Milton Road, Herne Hill, SE24

£299,950

1 bedroom flat - conversion for sale

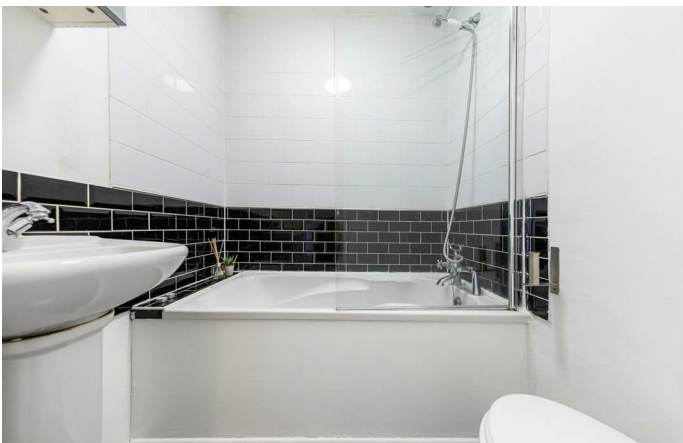
Property Details

A fantastic one bed flat in the hear of Poets Corner. This first floor Victorian conversion flat has an open plan reception and kitchen area which spans the width of the building, flooded with natural light thanks to the large sash windows. The bathroom, like the rest of the property, is in good condition. The bedroom is a comfortable double room with storage options. The property is situated in a popular location and unlike a lot of similar conversions, the majority of the total square footage is useable living space, as opposed to being distributed within larger hallways.

Features

- One double bedroom
- Victorian Conversion
- Sought-after location
- Highly desirable road
- Close to Brockwell Park
- Share of freehold
- Chain-free

Council tax band B EPC rating D (68)



Milton Road, Herne Hill, SE24



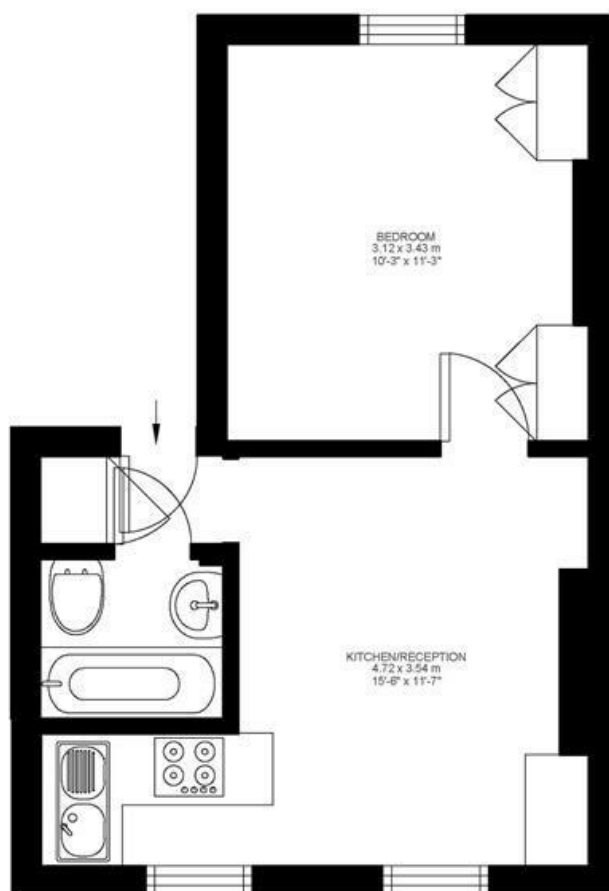
1 Bed flat

Approx internal area:

304 sqft 28 sqm

While we do try our very best, floor plans are produced as a guide only and we take no responsibility for the precise accuracy with which any property is represented

Milton Road



First Floor



Milton Road, Herne Hill, SE24

