



674 sq
ft



2



1



1

REDBRIK
ESTATE AGENTS



Helping you find
your home at...

Yeldersley Close, Holme Hall
Guide Price £220,000 to £230,000

Guide Price £220,000 - £230,000. Located on a quiet cul-de-sac is this well maintained two bedroom detached bungalow.

- Two Bedroom Detached Bungalow
- Open Plan Lounge/ Diner
- Fitted Kitchen
- No Onward Chain
- Sought After location
- Fitted Bathroom With Three Piece Suite
- Enclosed Rear Garden With Lawn & Patio
- Off Street parking For Numerous Cars & Garage/ Workshop
- GCH & uPVC Double Glazing
- Energy Rating D - Freehold.

Set on a fantastic plot the property offers well ordered accommodation with further scope for a prospective purchaser to modernise and re-configure to their individual requirements. Ideally placed for local amenities, shops, schools, direct access to Holmebrook Valley Park and transport links the property is available with no onward chain...

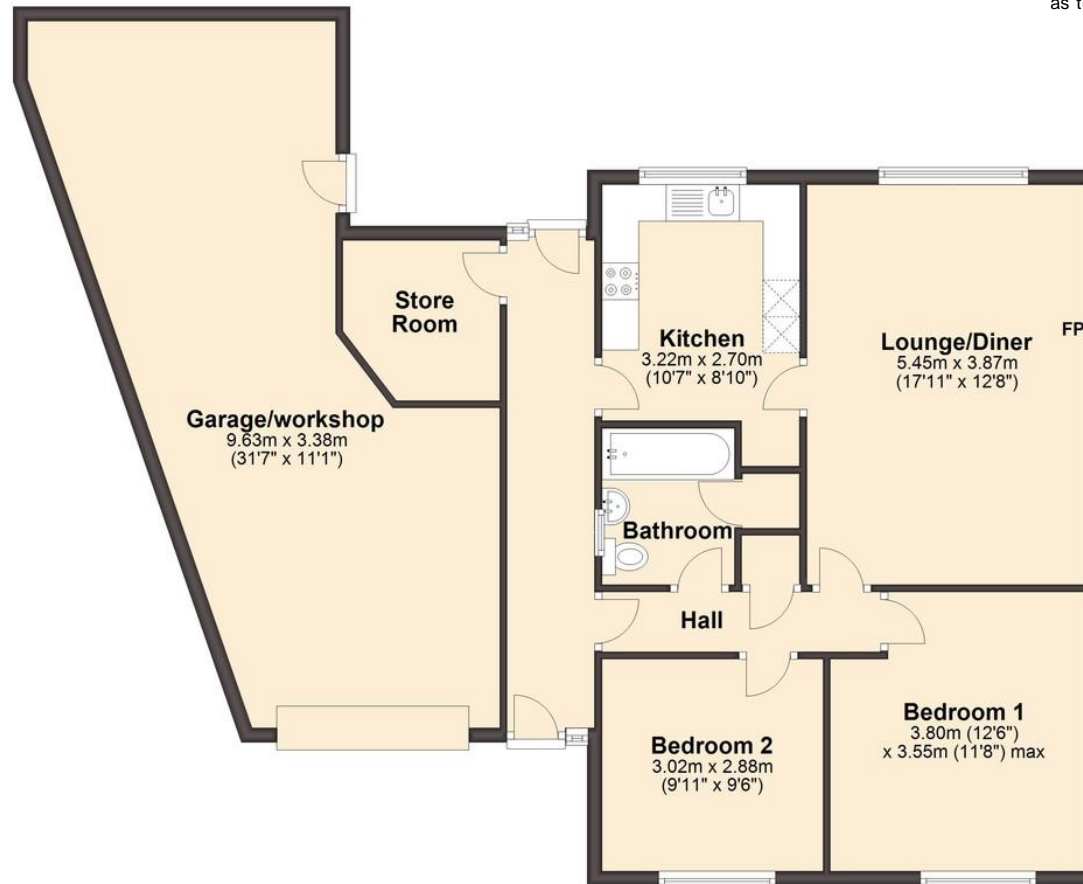




Ground Floor

Approx. 62.6 sq. metres (674.0 sq. feet)

We endeavour to make these particulars as accurate as possible, but they should only be used as guidance and they do not constitute any part of the contract. All measurements are approximate and no guarantees are made to the services, heating systems, appliances (if any) or fittings as to their working order and no warranty can be given or implied.



Total area: approx. 62.6 sq. metres (674.0 sq. feet)

You may download, store and use this material for your own personal use and research. You may not republish, retransmit, redistribute or otherwise make the material available to any party or make the same available on any website, on or off line service or hard copy without the website owner's express written consent. The website owner's copyright must remain on all reproductions of material taken from this website.

