



- Top Floor (Second)
- 804 Square Foot
- Share of Freehold
- Large Reception Room
- Period Charm
- Underfloor Heating

Elder Avenue, Crouch End N8

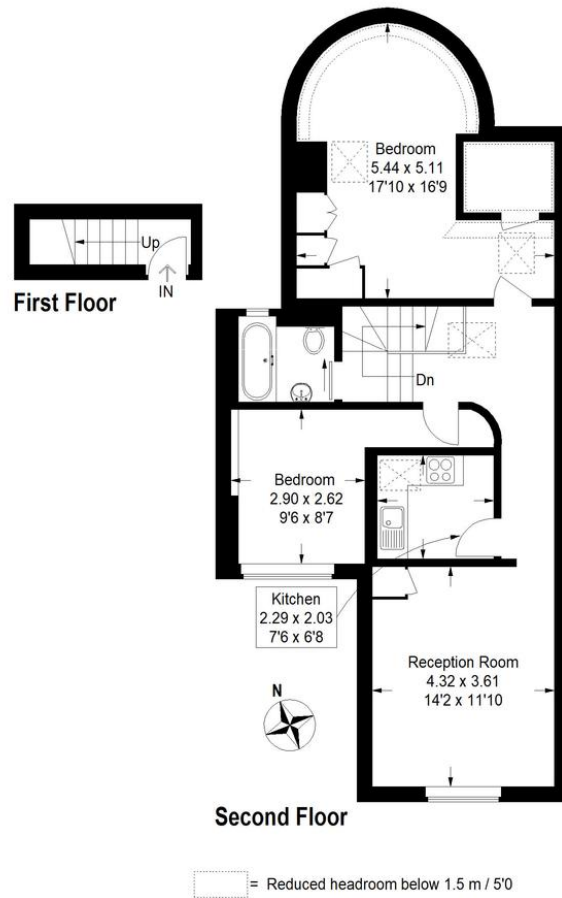
Asking Price Of £495,000

An 804 square foot two-bedroom, second floor (top) apartment situated within a period building in the centre of Crouch End.

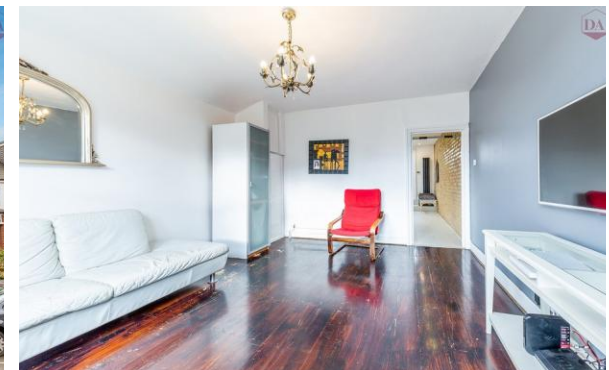
The apartment is full of character and boasts a Share of Freehold, four skylights flooding the flat with natural light and exposed brickwork in the hallway. Further benefits include a large reception room, separate kitchen and family bathroom.

Elder Avenue, N8

Approximate Gross Internal Area
74.7 sq m / 804 sq ft



Measured in accordance with RICS Code of Measuring Practice. To be used for identification and guidance purposes only.
Whilst every care is taken in the preparation of this plan, please check all dimensions, shapes and compass bearings before making any decisions reliant upon them.
www.eljahh.co.uk ©2019 info@eljahh.co.uk



15 Park Road, Crouch End,
London, N8 8TE

<http://www.davidastburys.com>
0203 000 6787
crouchend@davidastburys.com

Agents Note: Whilst every care has been taken to prepare these sales particulars, they are for guidance purposes only. All measurements are approximate and for general guidance purposes only and whilst every care has been taken to ensure their accuracy, they should not be relied upon and potential buyers are advised to recheck the measurements.