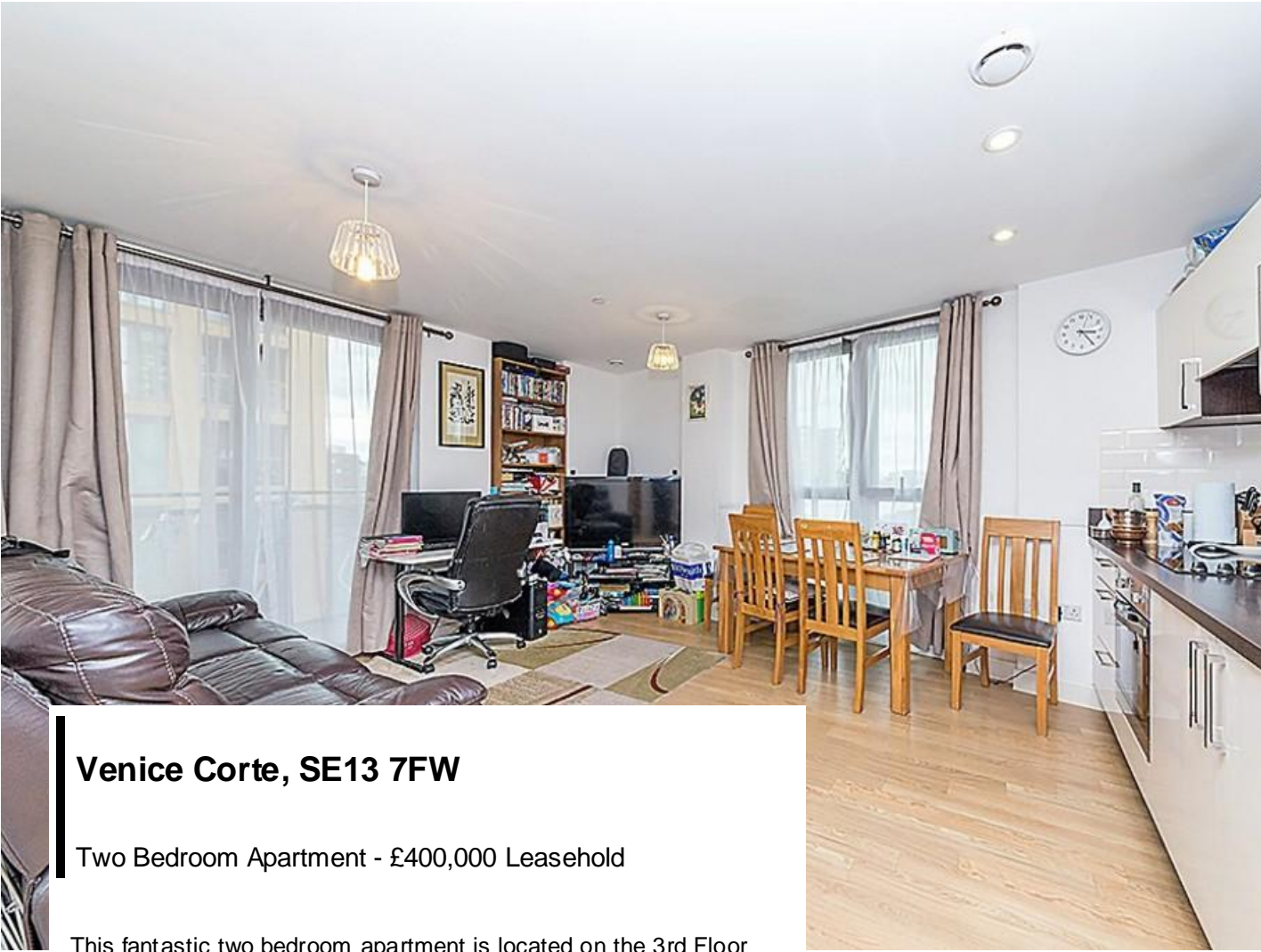


www.madisonbrook.com





Venice Corte, SE13 7FW

Two Bedroom Apartment - £400,000 Leasehold

This fantastic two bedroom apartment is located on the 3rd Floor of the stunning Venice Corte, which forms part of the Renaissance Development.

You will benefit from a smart open plan living space with a stylish fully integrated kitchen, boasting access out on to a private balcony which floods the room with natural light. You will find two good sized double bedrooms & a modern & contemporary family bathroom. This apartment has been kept to a good standard throughout & is located within a large regeneration scheme happening in the Lewisham Borough, making this an ideal investment opportunity. Additional benefits include a 24 hour concierge & a private residents terrace.

Transport links include Lewisham Station only moments away offering access to the DLR (Docklands Light Railway) & a South Eastern line making Central London & beyond easily accessible

KEY FEATURES

- Two Bedroom Apartment
- 5th Floor Location
- Sq. Ft. Internally
- 24 Hour Concierge
- Moments from Lewisham Train Station
- Private Balcony
- Service Charge: £1,500.00 Per Annum
- Ground Rent: £350.00 Per Annum

Tenure

Lease Expires	119 Years Remaining
Ground Rent	£300 Per Annum
Service Charge	£1,500 Per Annum
Local Authority	Lewisham London Borough Council
Council Tax Band	C

Leasehold



Total area: approx. 57.1 sq. metres (614.2 sq. feet)

This floor plan should be used as a general outline for guidance only and does not constitute in whole or in part an offer or contract. Any intending purchaser or lessee should satisfy themselves by inspection, searches, enquiries and full survey as to correctness of each statement. Any areas, measurements or distances quoted are approximate.
88Photo.co.uk

Madison Brook
Lewisham
43 Loampit Vale,
London, SE13 7FT

lewisham@madisonbrook.com
020 3946 6200

We have prepared these property particulars as a general guide to a broad description of the property. They are not intended to constitute part of an offer or contract. We have not carried out a structural survey and the services, appliances and specific fittings have not been tested. All photographs, measurements, floorplans and distances referred to are given as a guide only and should not be relied upon for the purchase of carpets or any other fixtures or fittings. Lease details, service charges and ground rent (where applicable) and council tax are given as a guide only and should be checked and confirmed by your Solicitor prior to exchange of contracts. The copyright of all details, photographs and floorplans remain exclusive to Madison Brook International.

MADISON BROOK
INTERNATIONAL