

TO VIEW PROPERTIES CONTACT

sales@tyneandcountry.com or telephone **01207 260 707**



Tyne & Country The Spetchells Centre, 58 Front Street, Prudhoe, Northumberland NE42 5AA

www.tyneandcountry.com



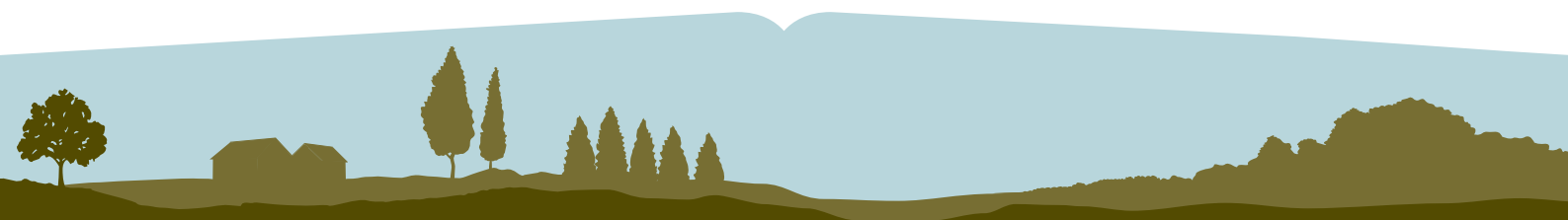
Tyne & Country

REAL HOMES FOR REAL PEOPLE

36 Berry Edge, Consett



£550 Per calendar month



SALES • LETTINGS • INVESTMENTS • PROPERTY MANAGEMENT • BUILDING WORKS

TO VIEW PROPERTIES CONTACT

sales@tyneandcountry.com or telephone **01207 260 707**

Tyne & Country The Spetchells Centre, 58 Front Street, Prudhoe, Northumberland NE42 5AA

www.tyneandcountry.com

THREE BEDROOM SEMI DETACHED HOUSE AVAILABLE FOR RENT, located in the heart of Consett on a popular development situated close to Consett town centre and the shopping parade offering a variety of shopping outlets and Supermarkets. Property comprises: hallway, cloakroom, living room with French doors to garden, modern fitted kitchen with fitted oven and hob, three first floor bedrooms and bathroom. Externally there is a garden to the rear and to the front is an allocated parking bay. The property benefits from gas central heating and double glazing. Viewing is highly recommended. Available from 9th December 2019.

NO PETS ALLOWED

Entrance

Double glazed entrance door, stairs to first floor, central heating radiator.

Ground Floor Cloaks

Fitted with a low level w.c., wash hand basin, extractor, tiled flooring.



Lounge 13'8" x 14'7"

Double glazed window, two central heating radiators, under stairs storage cupboard, double glazed French doors to front garden.



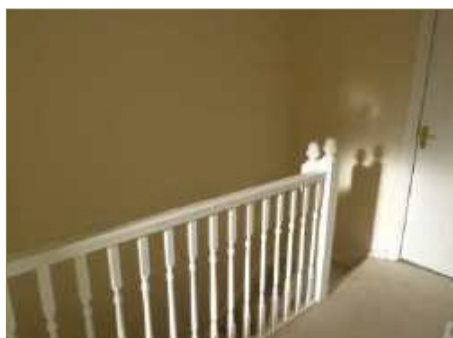
Kitchen 10'1" x 7'5"

Fitted with a range of white wall and base units with contrasting work surfaces over, stainless steel sink and drainer with mixer tap, integral oven and hob with stainless steel extractor hood over, integral fridge freezer, tiling to splash area, tiled floor, double glazed window.



First Floor Landing

Spindle stair rails, smoke alarm, double glazed window.



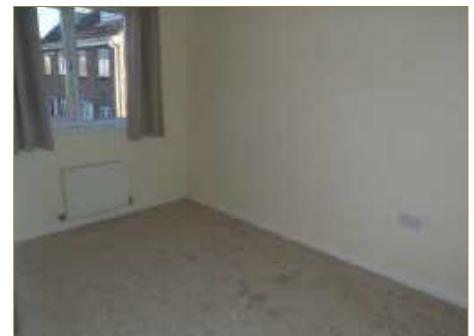
Bedroom One 14'4" x 8'0"

Double glazed window, central heating radiator.



Bedroom Two 11'4" x 8'0"

Double glazed window, central heating radiator.



Bedroom Three 8'0" x 6'5"

Double glazed window, central heating radiator, loft access.



Bathroom

Fitted with a white suite comprising; panelled bath with shower over and half glass screen, low level w.c., wash hand basin, double glazed window, central heating radiator, part tiling to splash area, tiled floor.

