

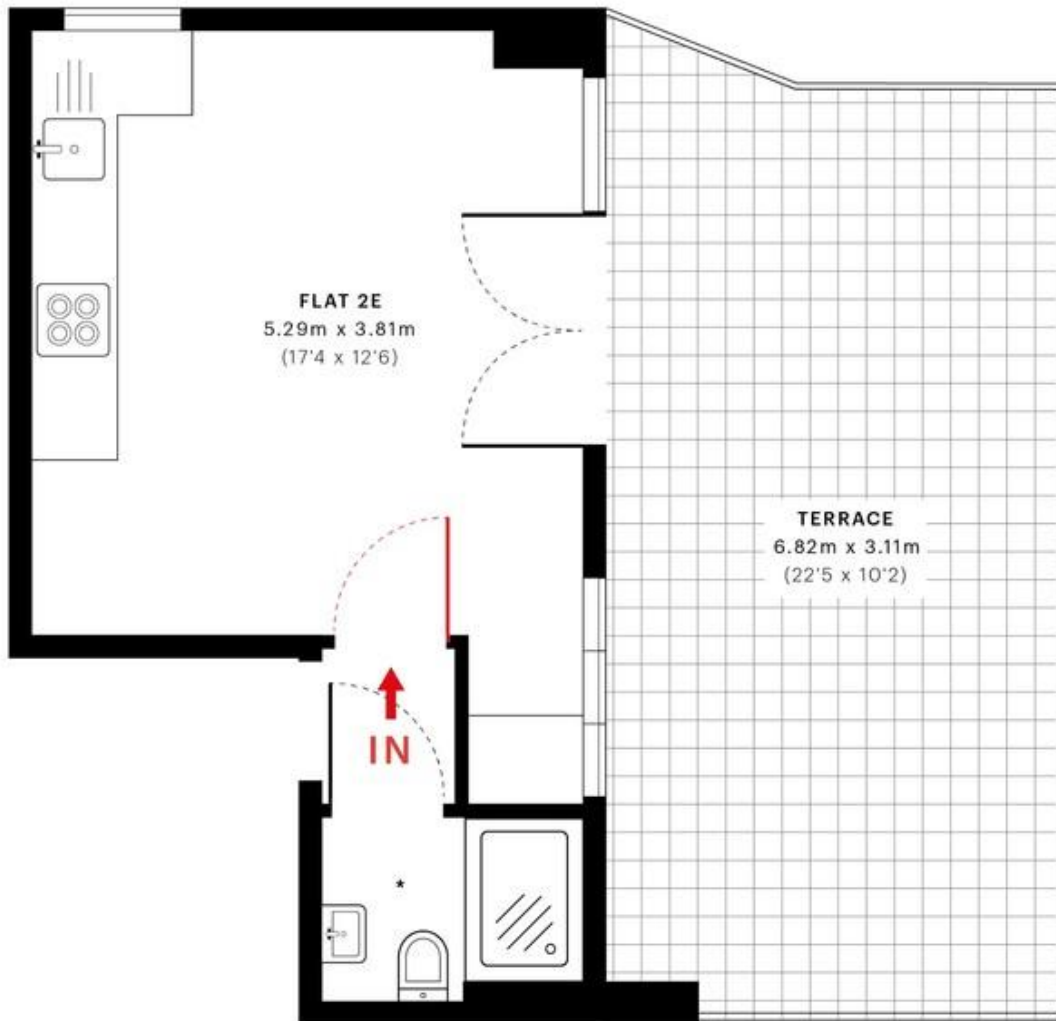


Golders Green Road, London NW11

£1,050pcm

Mile are pleased to offer to the market this brand new, high specification super bedsit. The property benefits from a high quality, fully fitted private kitchen, a private large roof terrace and has brand new communal bathrooms. The property is located in the heart of Golders Green with easy access to local transport and amenities as well as an array of local Synagogues. All bills and Wi-Fi Included. Available 21st March! EPC rating D.

- BRAND NEWLY REFURBISHED
- STUDIO
- HEART OF GOLDERS GREEN
- ALL BILLS INCLUDED
- INTERNET PROVIDED
- HIGH SPECIFICATION
- FULLY FITTED KITCHEN
- CLOSE TO STATION AND SHOPS
- PRIVATE ROOF TERRACE
- AVAILABLE 21st MARCH!



* COMMUNAL BATHROOM

— Second Floor

GROSS INTERNAL AREA (GIA)
The footprint of the property.
16.6 Sqm / 178.5 Sqft

NET INTERNAL AREA (NIA)
Excludes walls and external features.
Includes washrooms, restricted head
16.6 Sqm / 178.6 Sqft

EXTERNAL STRUCTURAL FEATURES
Balconies, terraces, verandas etc.
20.4 Sqm / 219.4 Sqft

RESTRICTED HEAD HEIGHT
Limited use area under 1.5m
0.0 Sqm / 0.0 Sqft