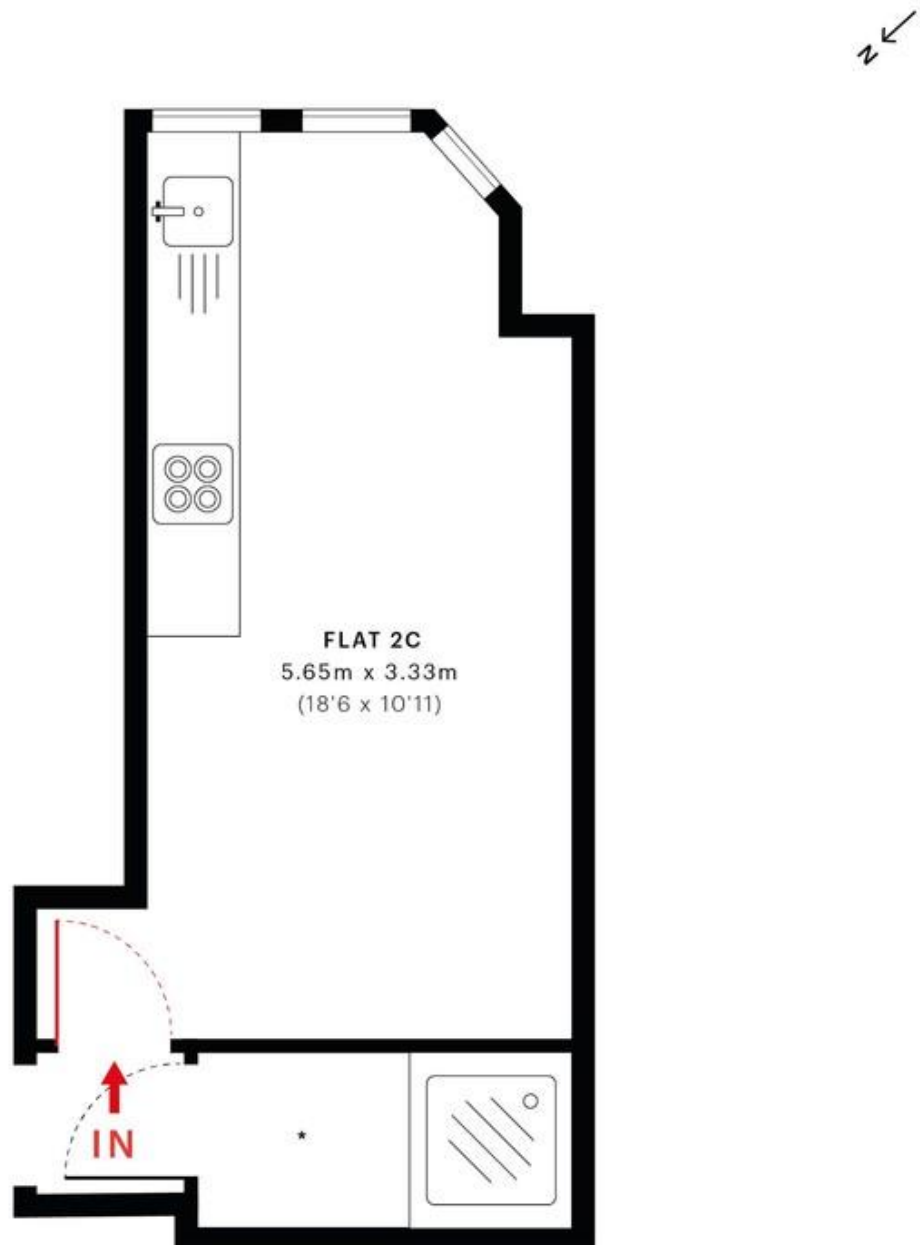


Golders Green Road, London NW11

£1,300 pcm %tenure%

Mile are pleased to offer to the market this , high specification super bedsit. The property benefits from a high quality, fully fitted private kitchen and has Modern communal bathrooms. The property is located in the heart of Golders Green with easy access to local transport and amenities as well as an array of local Synagogues. All bills and Wi-Fi Included. Available Now !!!! MUST BE SEEN TO AVOID DISAPPOINTMENT!!!! EPC rating C.

- MODERN
- STUDIO
- HEART OF GOLDERS GREEN
- ALL BILLS INCLUDED
- INTERNET PROVIDED
- FULLY FITTED KITCHEN
- AVAILABLE NOW
- CLOSE TO STATION AND SHOPS
- FURNISHED OPTIONAL
- HIGH SPECIFICATION



* COMMUNAL BATHROOM

— First Floor



GROSS INTERNAL AREA (GIA)
The footprint of the property.
14.5 Sqm / 156.3 Sqft



NET INTERNAL AREA (NIA)
Excludes walls and external features.
Includes washrooms, restricted head
14.5 Sqm / 156.3 Sqft



EXTERNAL STRUCTURAL FEATURES
Balconies, terraces, verandas etc.
0.0 Sqm / 0.0 Sqft



RESTRICTED HEAD HEIGHT
Limited use area under 1.5m
0.0 Sqm / 0.0 Sqft