

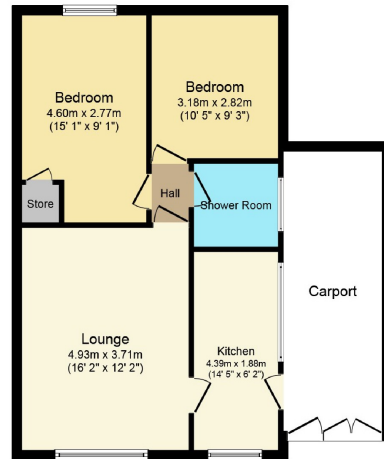


58 Winchester Avenue, Nuneaton

Offers in excess of £200,000



58 Winchester Avenue, Nuneaton



This Floor Plan is for illustration purposes only and may not be representative of the property. The position and size of doors, windows and other features are approximate. Unauthorized reproduction prohibited. © PropertyBOX

A beautifully presented semi-detached bungalow, in the sought after Weddington area. Comprising Lounge with feature fireplace and laminate flooring, Kitchen with a range of matching base and wall units, Bathroom with shower cubicle and two bedrooms, master with built in wardrobes. Driveway and lawn to the front and covered access to rear garden, garage and very attractive landscaped garden. Gas central heating and Double glazing (as and where specified)

Location - off Weddington Road, giving easy access to Nuneaton town centre, Nuneaton train station and A5

As the sellers agent we are not surveyors or conveyancing experts and as such we cannot and do not comment on the condition of the property or issues relating to title or other legal issues that may affect this property, unless we have been made aware of such matters. Interested parties should employ their own professionals to make such enquiries before making any transactional decisions.

Lounge

16'2" x 12'2" (4.93m x 3.71m)

Kitchen

14'5" x 6'2" (4.39m x 1.88m)

Bedroom 1

15'1" x 9'1" (4.60m x 2.77m)

Bedroom 2

10'1" x 9'2" (3.07m x 2.79m)