



1,250  
sq ft



4



2



3

**REDBRIK**  
ESTATE AGENTS



Helping you find  
your home at...

Bamford Road, Inkersall, Chesterfield

Guide Price £280,000 to £285,000



£280,000 - £285,000 (Guide Price) Located within this popular residential development is this beautifully presented and contemporary styled four bedroom detached home.

- Four Bedroom Detached House
- Modern Fitted Breakfast Kitchen With Integrated Appliances
- Separate Dining Room
- Spacious Bay Window Lounge
- uPVC Conservatory Overlooking The Rear Garden
- Master Bedroom With En-Suite
- Modern Fitted Bathroom With White Suite
- Enclosed Rear Garden With Lawn & Patio
- Off Street parking For Numerous Cars & Garage
- Energy Rating D - Freehold.

With South facing views over open fields to the rear, this deceptively spacious property offers neutrally decorated, well ordered accommodation set across two levels, a low maintenance enclosed rear garden and ample off street parking with garage. Ideally placed for local shops, amenities, schools, parks and transport links.



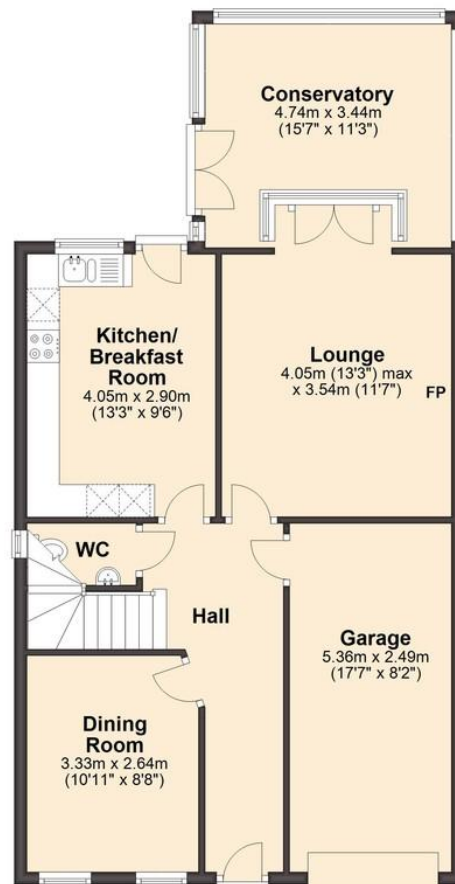




We endeavour to make these particulars as accurate as possible, but they should only be used as guidance and they do not constitute any part of the contract. All measurements are approximate and no guarantees are made to the services, heating systems, appliances (if any) or fittings as to their working order and no warranty can be given or implied.

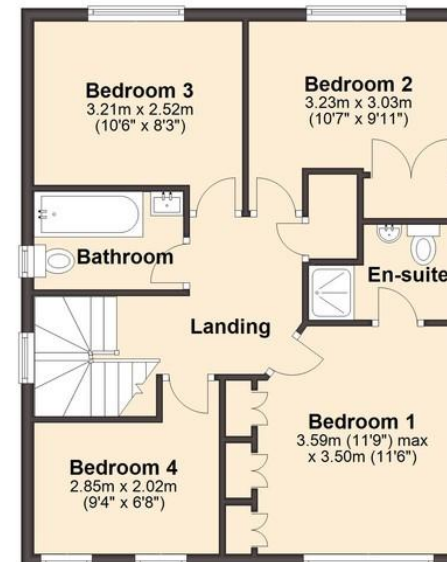
### Ground Floor

Approx. 62.6 sq. metres (673.5 sq. feet)



### First Floor

Approx. 53.6 sq. metres (576.6 sq. feet)



Total area: approx. 116.1 sq. metres (1250.1 sq. feet)

You may download, store and use this material for your own personal use and research. You may not republish, retransmit, redistribute or otherwise make the material available to any party or make the same available on any website, on or off line service or hard copy without the website owner's express written consent. The website owner's copyright must remain on all reproductions of material taken from this website.

