



## 16 Singer Close

Courthouse Green, Coventry, CV6 7GY

**£650 Per Calendar Month**

AVAILABLE END OF OCTOBER.....MODERN MAISONETTE.....CLOSE TO SHOPPING PARK.....A really nice two bedroom maisonette located in the Courthouse Green area of Coventry. Briefly comprising of lounge, fitted kitchen with fridge and cooker, two bedrooms, wet room and the added bonus of a garage. Offered on a FURNISHED basis. No Pets. No Smokers.

- Available December
- Ground Floor
- Garage
- Two Double Bedrooms
- Very Modern
- Furnished

### Viewing

Please contact us on 02477 170170 if you wish to arrange a viewing appointment for this property or require further information.

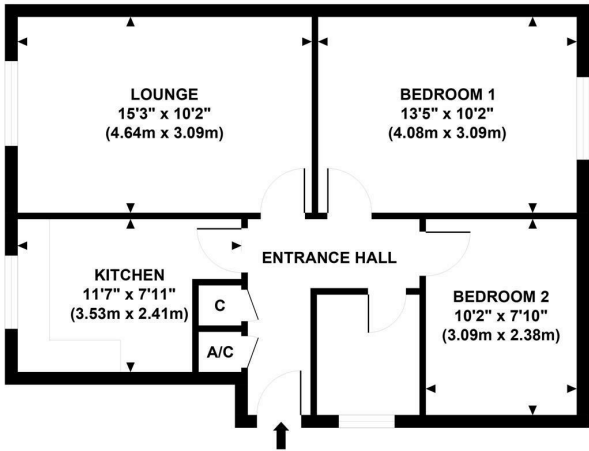




Floor Plan

SINGER CLOSE

Approximate Gross Internal Area: 569 sq ft / 52.90 sq m

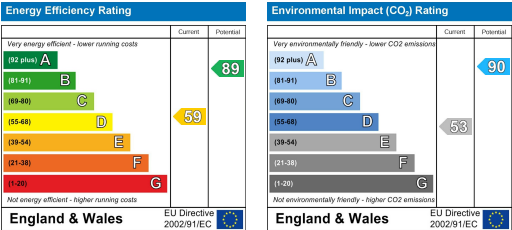


Although every attempt has been made to ensure accuracy, all measurements are approximate. The floor plan's for illustrative purposes only and not to scale. Measured in accordance to RICS standards.

Area Map



Energy Efficiency Graph



These particulars, whilst believed to be accurate are set out as a general outline only for guidance and do not constitute any part of an offer or contract. Intending purchasers should not rely on them as statements of representation of fact, but must satisfy themselves by inspection or otherwise as to their accuracy. No person in this firm's employment has the authority to make or give any representation or warranty in respect of the property.

CONTACT INFORMATION

24a Warwick Row, Coventry CV1 1EY  
02477 170170

info@matthewjames.uk.com  
www.matthewjames.uk.com

Facebook  
Twitter