



Norwood Road, Tulse Hill, SE24

2 bedroom flat - purpose built for sale

£375,000

Share of Freehold

Property Details

A charming two-bedroom apartment on the ground floor of a popular block, located moments from Tulse Hill station and beautiful Brockwell Park. This light and airy property comprises two comfortable double bedrooms, a tastefully finished bathroom, a well-sized kitchen and a bright, open plan reception room with plenty of space for both entertaining and dining. Last but not least, the apartment also benefits from some communal outside space and bike storage. The property is conveniently located in the centre of thriving Tulse Hill, just a couple of minutes' walk from the train station. Herne Hill station is also a short walk away, with both stations providing access to Victoria, The City and London Bridge, all within thirty minutes door to door. The restaurants and shops within the lauded Brixton Village, the amenities of Brixton High Street and Brixton Station are all close-by.

Features

- Two double bedrooms
- Nearly 700 square feet of internal living space
- Close to Brockwell Park
- Ready to move into hassle-free
- Close to transport links
- Chain-free

Council tax band C EPC rating E (49)



Norwood Road, Tulse Hill, SE24



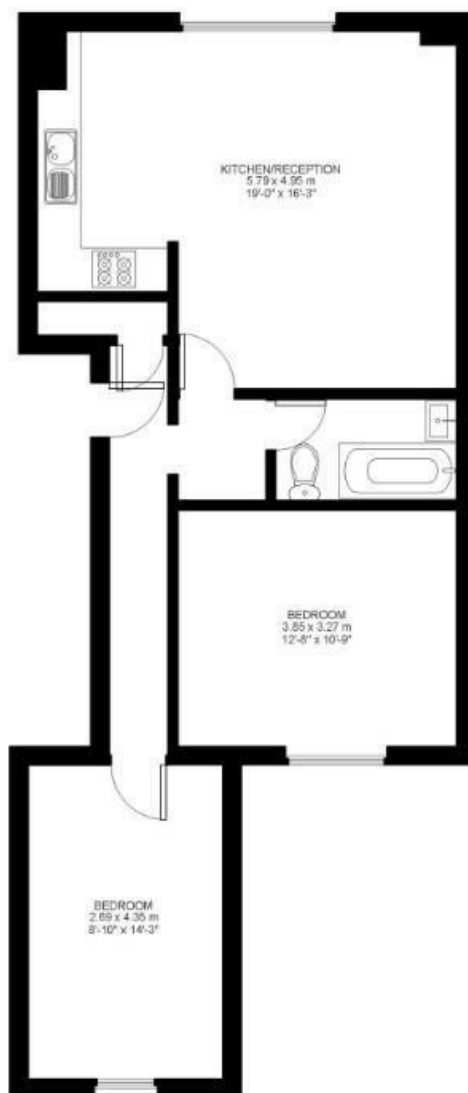
2 Bed flat

Approx internal area:

692 sqft 64 sqm

While we do try our very best, floor plans are produced as a guide only and we take no responsibility for the precise accuracy with which any property is represented

Norwood Road



Ground Floor



Norwood Road, Tulse Hill, SE24

