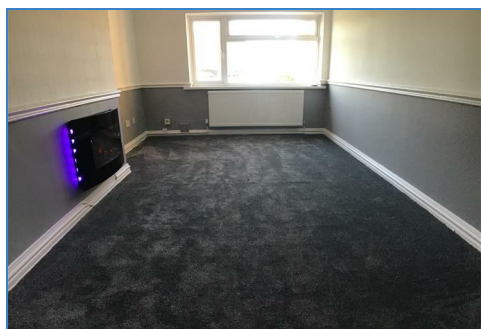


Viewings
Property management
Accounts and payments
Tenancy applications and renewals
Reports and administration
Valuations and landlord queries

0121 726 9417
0121 726 9418
0121 726 9419
0121 726 9420
0121 726 9421
0121 726 9422

enquiries@pcealettings.co.uk
propertymanagement@pcealettings.co.uk
accounts@pcealettings.co.uk
tenancy@pcealettings.co.uk
admin@pcealettings.co.uk
enquiries@pcealettings.co.uk



63 Fir Tree Grove, Sutton Coldfield, B73 5UN

£575 Per Month

This ground floor flat has been re-decorated and re-carpeted throughout and offers deceptively spacious accommodation within close proximity to Boldmere centre. Close to local transport links including Wylde Green Train Station

The accommodation briefly comprises, Communal entrance, Private entrance hallway with large walk in storage room (could possibly be utilised a study area), Lounge with feature fire, Modern fitted kitchen with appliances and breakfast bar, large double bedroom, bathroom with white suite and shower over bath, gas central heating, double glazing. Council tax band A. EPC rating D. Unfurnished. No Smokers/Pets, Fully Managed by Paul Carr Lettings. Fees MAY apply during the tenancy, Available within three weeks of application.

Floor Plan

Area Map



These particulars, whilst believed to be accurate are set out as a general outline only for guidance and do not constitute any part of an offer or contract. Intending purchasers should not rely on them as statements of representation of fact, but must satisfy themselves by inspection or otherwise as to their accuracy. No person in this firms employment has the authority to make or give any representation or warranty in respect of the property.

“With you every step of the way”

The largest independent estate agent in the West Midlands with offices in:

Aldridge - Brownhills - Burntwood - Erdington - Four Oaks - Great Barr
Great Wyrley - Kingstanding - Streetly - Sutton Coldfield - Walmley

Paul Carr T/A Paul Carr Estate Agents
Introductions only to Openwork Ltd, which is authorised and regulated by Financial Conduct Authority

Energy Efficiency Graph

