



**Rottingdean Close, Roseworth, TS19 9BZ**  
**3 Bed - House - Mid Terrace**  
**Chain Free £75,000**

\*\*\* CHAIN FREE \*\*\* Offered to the market this three bedroom mid terraced home, situated on Rottingdean Close, Roseworth. The property benefits of a good sized private rear garden, well fitted kitchen/dining room and neutral decor throughout. The internal layout comprises of: entrance hall, good sized lounge, open plan kitchen/diner with integrated oven and hob and uPVC double glazed french doors opening to the rear garden. To the first floor are three good sized bedrooms and the family bathroom with separate WC. Externally, there is a laid to lawn area with driveway to the front completes this well maintained home.



**ROBINSONS**  
 SALES • LETTINGS • AUCTIONS • SURVEYS



## Rottingdean Close, Roseworth, TS19 9BZ

### ENTRANCE HALLWAY

Via uPVC double glazed door, under stairs cupboard, radiator, doors leading to kitchen and lounge

### LOUNGE

19'10 x 10'10 (6.05m x 3.30m)

An electric fire, two radiators, windows to the front and rear elevations.

### DINING AREA

17'0 x 8' (5.18m x 2.44m)

With fitted units, radiator, under stairs storage cupboard, uPVC double glazed door to the rear, uPVC double glazed french doors to the decked area at the rear of the property.

### KITCHEN

9'6 x 9'5 (2.90m x 2.87m)

Fitted with a range of base wall and drawer units incorporating a gas hob, oven, extractor fan, one and a half bowl sink unit with single drainer, space for washing machine, door leading to the front of the property and uPCV double glazed window to the front elevation.

### LANDING

Doors leading to three bedrooms, bathroom and separate WC, boiler cupboard, uPVC double glazed window to the rear elevation

### BEDROOM ONE

12'5 x 10'8 (3.78m x 3.25m)

uPVC double glazed window to the front elevation, radiator and built in storage cupboard.

### BEDROOM TWO

14'4 x 9'11 (4.37m x 3.02m)

uPVC double glazed window to the front elevation, built in storage cupboard, radiator

### BEDROOM THREE

11'6 x 7'6 (3.51m x 2.29m)

uPVC double glazed window to the rear elevation, radiator.

### BATHROOM

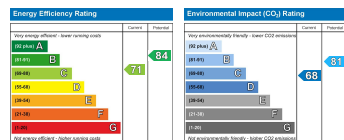
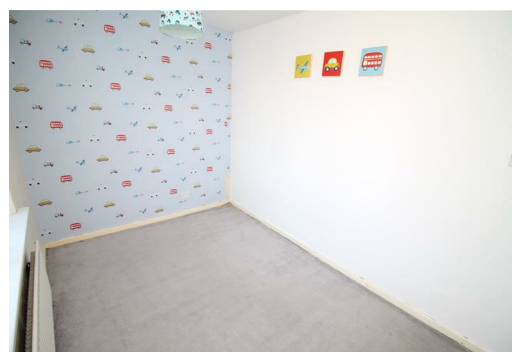
Fitted with a two piece suite comprising of bath with over bath shower and pedestal wash hand basin, chrome towel rail, uPVC double glazed frosted glass window to the rear elevation

### SEPARATE WC

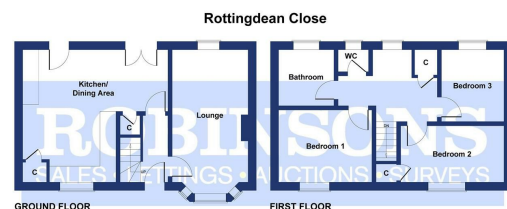
Fitted with a low level WC, uPVC frosted glass window to the rear elevation.

### OUTSIDE

There are gardens to the front and rear of the property in addition to a single driveway.



Every care has been taken with the preparation of these particulars, but they are for general guidance only and complete accuracy cannot be guaranteed. If there is any point, which is of particular importance please ask or professional verification should be sought. All dimensions are approximate. The mention of fixtures, fittings &/or appliances does not imply they are in full efficient working order. Photographs are provided for general information and it cannot be inferred that any item shown is included in the sale. These particulars do not constitute a contract or part of a contract. Robinsons can recommend financial services, surveying and conveyancing services to sellers and buyers. Robinsons staff may benefit from referral incentives relating to these services.



SKETCH PLAN FOR ILLUSTRATIVE PURPOSES ONLY  
All measurements, walls, doors, windows, fittings and appliances, their sizes and locations, are approximate only. They cannot be regarded as being a representation by the seller, nor their agent.  
Produced by Pottingplans Ltd. 2019



**ROBINSONS**  
SALES • LETTINGS • AUCTIONS • SURVEYS