



760 sq
ft



2



1



1

REDBRIK
ESTATE AGENTS



Helping you find
your home at...

Orchard View Road, Ashgate

£175,000

Located on a quiet road in the sought after suburb of Ashgate is this beautifully presented and superbly styled two bedroom semi-detached house.

- Two Bedroom Semi Detached House
- Open Plan Kitchen/ Diner With Patio Doors To The Rear Garden
- Modern Kitchen With Integrated Cooking Appliances
- Spacious Bay Window Lounge
- Modern Fitted Bathroom With White Suite
- Sought After Location
- Enclosed Rear Garden With Lawn & Patio
- Off-Street Parking
- GCH & uPVC Double Glazing
- Energy Rating TBC - Freehold.

Ideally suited to modern living the property provides well ordered, neutrally decorated accommodation set across two levels, low maintenance enclosed rear garden and off street parking. Conveniently located a short distance from local shops, schools, amenities, parks and transport links.

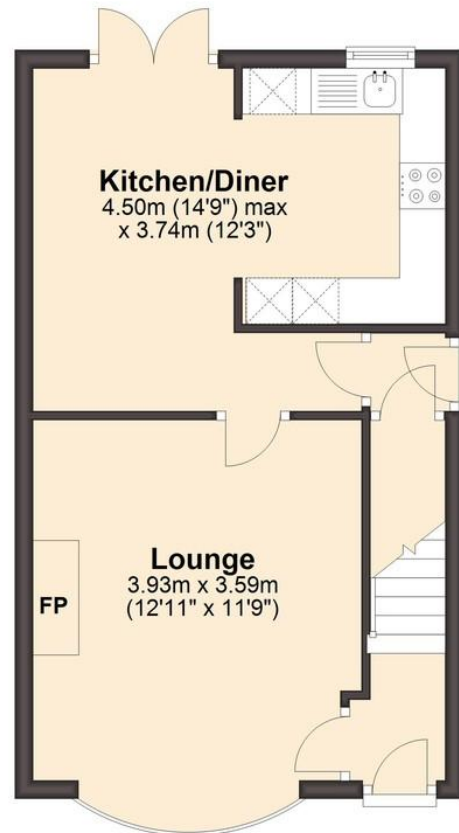




We endeavour to make these particulars as accurate as possible, but they should only be used as guidance and they do not constitute any part of the contract. All measurements are approximate and no guarantees are made to the services, heating systems, appliances (if any) or fittings as to their working order and no warranty can be given or implied.

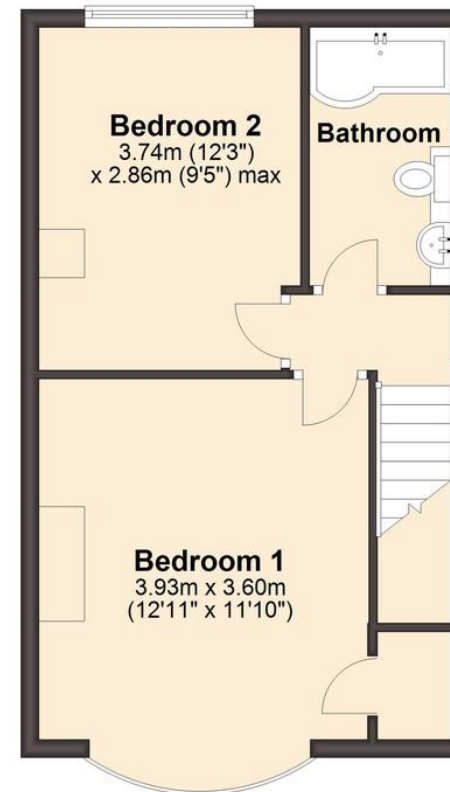
Ground Floor

Approx. 35.3 sq. metres (380.1 sq. feet)



First Floor

Approx. 35.3 sq. metres (380.2 sq. feet)



Total area: approx. 70.6 sq. metres (760.3 sq. feet)

You may download, store and use this material for your own personal use and research. You may not republish, retransmit, redistribute or otherwise make the material available to any party or make the same available on any website, on or off line service or hard copy without the website owner's express written consent. The website owner's copyright must remain on all reproductions of material taken from this website.

