





- No Upper Chain
- Spacious Living
- Versatile Accommodation
- Great Location
- Well Presented
- Master En-Suite
- Gardens
- Original Features





Offered for sale with no chain this is a fantastic opportunity to purchase this well presented and spacious three bedroom maisonette located within a very desirable part of Ashbrooke.

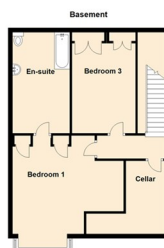
The property offers versatile accommodation throughout and retains many original features and will appeal to a variety of buyers. Close to excellent schools, amenities and transport links, early viewings are recommended.

Briefly comprising to the ground floor:- shared entrance vestibule, hallway, spacious lounge with views over the cricket ground, bedroom two with storage and door leading to the enclosed courtyard, spacious four piece bathroom, dining room, modern kitchen, study and a Lean-to. To the lower level the accommodation offers a master bedroom with en-suite, bedroom three and a cellar providing storage. The property also benefits from gas central heating and a variety of original style sash windows. Externally there is a well stocked garden to the front and enclosed patio gardens to the rear along with a detached garage.

For sale by Modern Method of Auction: Starting Bid Price £200,000 plus Reservation Fee.

This property is for sale by The Great North Property Auction powered by iam-sold.





The difference between house and home

You may download, store and use the material for your own personal use and research. You may not republish, retransmit, redistribute or otherwise make the material available to any party or make the same available on any website, online service or bulletin board of your own or of any other party or make the same available in hard copy or in any other media without the website owner's express prior written consent. The website owner's copyright must remain on all reproductions of material taken from this website.

Lounge 17'1" x 15'10" (5.21 x 4.83)

Dining Room 24'8" x 13'11" (7.52 x 4.26)

Kitchen 7'10" x 13'8" (2.40 x 4.18)

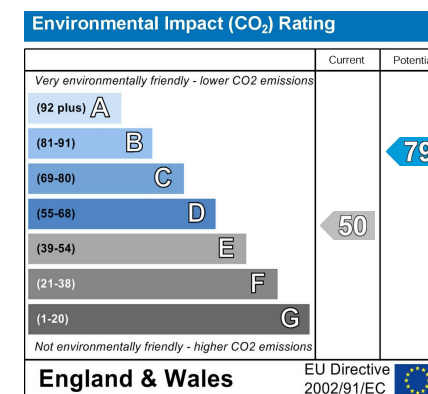
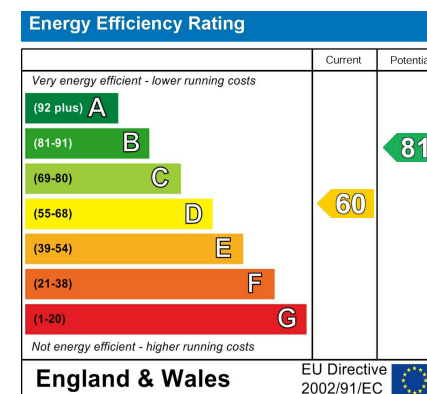
Study 8'7" x 11'6" (2.62 x 3.53)

Master Bedroom 14'9" x 18'6" (4.51 x 5.64)

Bedroom Two 17'11" x 15'10" (5.47 x 4.85)

Bedroom Three 13'7" x 10'2" (4.15 x 3.11)

Auctioneers Comments



Gosforth 0191 236 2070
 Newcastle 0191 284 4050
 Forest Hall 0191 605 3134
 High Heaton 0191 270 1122
 Low Fell 0191 487 0800
 Tynemouth 0191 257 2000
 Whitley Bay 0191 251 3000
 Property Management Centre 0191 236 2680



www.janforsterstates.com

