



- WELL PRESENTED FAMILY HOME
- EARLY VIEWING IS RECOMMENDED
- Entrance Hallway
- Delightful Sitting Room

88 Baldwins Lane, Hall Green, Birmingham , B28 0QE

This well presented semi-detached family home located within the heart of this hugely popular residential area perfectly positioned to take advantage of nearby facilities including; Shirley and Solihull, Touchwood Shopping Centre, Jaguar Land Rover, excellent local rail and transport links and the Midlands motorway network. Early viewing is advised to appreciate the accommodation which includes; central heating and double glazing, Entrance Hallway, Delightful Sitting Room, Fitted Kitchen/Dining Room, three Bedrooms, modern Bathroom, established Garden and driveway parking.



Property Description

DESCRIPTION

A unique opportunity to purchase this well presented semi detached family home which briefly comprises of; Entrance Hallway, delightful Sitting Room, fitted Kitchen/Dining Room, three Bedrooms, modern Bathroom.

OUTSIDE

The property has an established rear Garden with forecourt parking.





GENERAL INFORMATION

Tenure: We are advised by the vendor that the property is Freehold with vacant possession upon completion. However, we would advise that you check this with your legal advisor before exchanging contracts.

Services: All mains services are connected to the property. However, it is advised that you confirm this at point of offer.

Local Authority: Birmingham City Council.

OTHER SERVICES

DM & Co are pleased to offer the following services:-

Residential Lettings: If you are considering renting a property or letting your property, please contact the office on 0121 775 0101.

Mortgage Services: If you would like advice on the best mortgages available, please contact us on 0121 775 0101.

VIEWINGS

At short notice with DM & Co. Homes on 0121 775 0101 or by email sales@dmandcohomes.co.uk

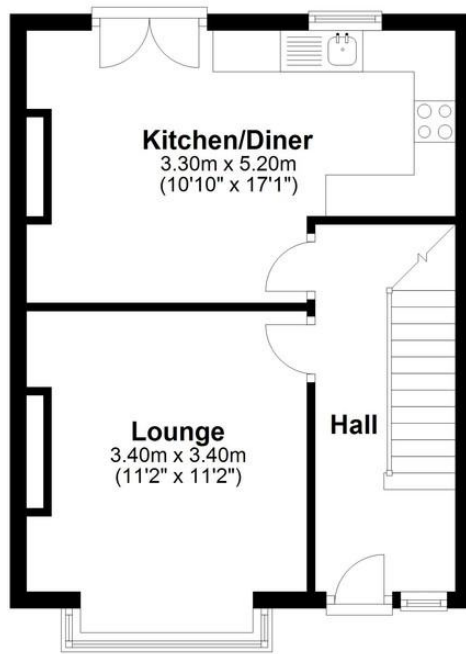
WANT TO SELL YOUR PROPERTY?

Call DM & Co. Homes on 0121 775 0101 to arrange your FREE no obligation market appraisal and find out why we are Solihull's fastest growing Estate Agency.

Agents Note: Whilst every care has been taken to prepare these sales particulars, they are for guidance purposes only. All measurements are approximate and are for general guidance purposes only and whilst every care has been taken to ensure their accuracy, they should not be relied upon and potential buyers are advised to recheck the measurements.

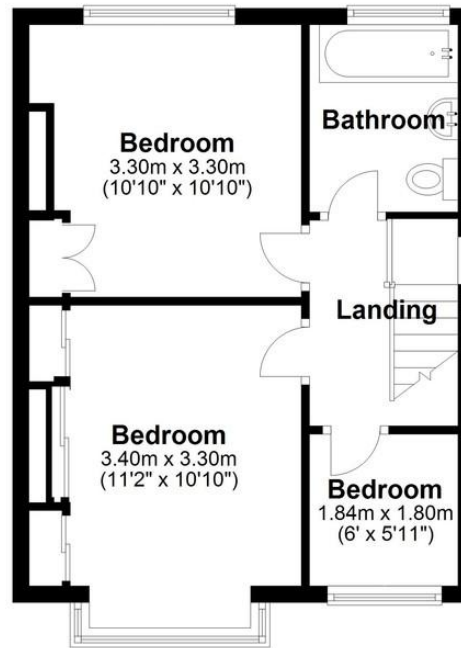
Ground Floor

Approx. 35.9 sq. metres (386.1 sq. feet)



First Floor

Approx. 35.8 sq. metres (385.8 sq. feet)



Total area: approx. 71.7 sq. metres (771.9 sq. feet)

Please note this plan is for illustration purposes only. All measurements are approximate and should be checked by prospective buyers/tenants. No responsibility is taken for any error, omission, or mis-statement.
Plan produced using PlanUp.

88 Baldwins Lane, Solihull

