



766 sq
ft



2



1



1

REDBRIK
ESTATE AGENTS



Helping you find
your home at...

Station Lane, Old Whittington

Asking Price Of £109,950

Located in the popular suburb of Old Whittington is this well maintained and neutrally decorated two bedroom semi-detached house.

- Two Bedroom Semi Detached House
- Open Plan Kitchen/ Diner
- Fitted Kitchen
- Spacious Bay Window Lounge
- No Onward Chain
- Fitted Bathroom With White Suite & Separate Toilet
- Enclosed Rear Garden With Lawn & Patio
- Off Street parking For Numerous Cars & Garage
- GCH & uPVC Double Glazing
- Energy Rating TBC - Freehold.

Of possible interest to first time buyers or investors alike the property offer flexible, well ordered accommodation set across two levels with further scope for a prospective purchaser to modernise and re-configure to their individual requirements. Ideally placed for local amenities, shops, schools and transport links the property is available with no onward chain...

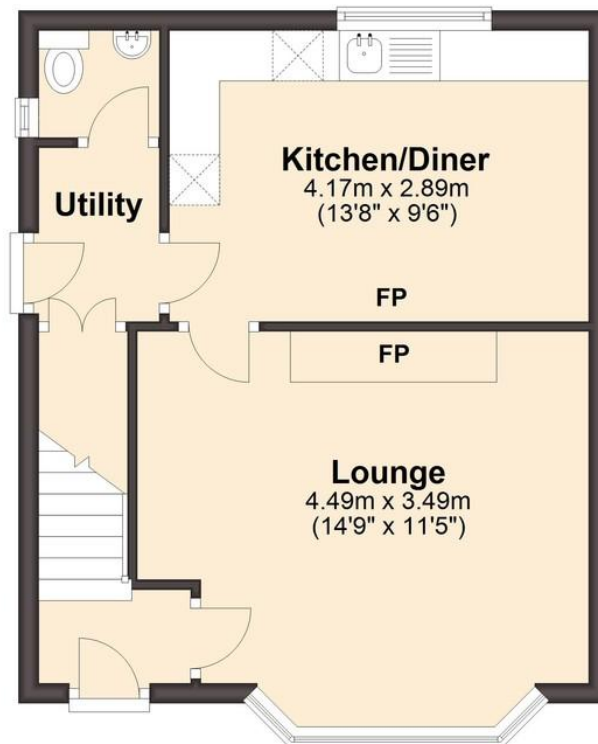




We endeavour to make these particulars as accurate as possible, but they should only be used as guidance and they do not constitute any part of the contract. All measurements are approximate and no guarantees are made to the services, heating systems, appliances (if any) or fittings as to their working order and no warranty can be given or implied.

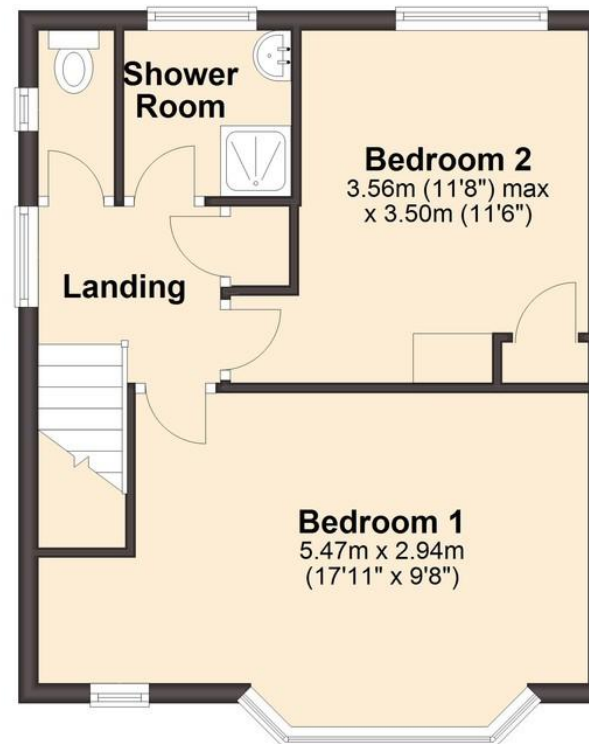
Ground Floor

Approx. 35.9 sq. metres (385.9 sq. feet)



First Floor

Approx. 35.4 sq. metres (380.8 sq. feet)



Total area: approx. 71.2 sq. metres (766.7 sq. feet)

You may download, store and use this material for your own personal use and research. You may not republish, retransmit, redistribute or otherwise make the material available to any party or make the same available on any website, on or off line service or hard copy without the website owner's express written consent. The website owner's copyright must remain on all reproductions of material taken from this website.

