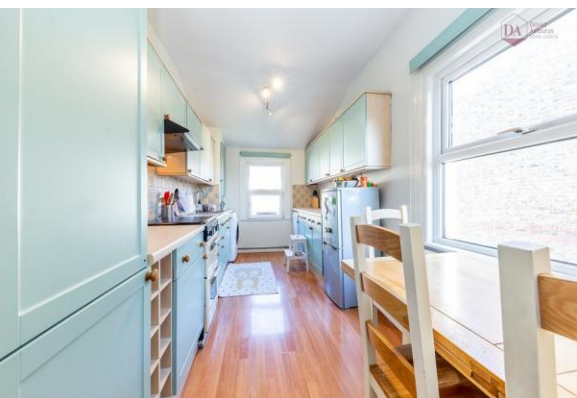




David  
Astburys



- Private Garden
- Private Entrance
- First Floor
- Share of Freehold
- 727 Square Feet
- Separate Reception

## North View Road, Crouch End N8

Guide Price £500,000 - £525,000

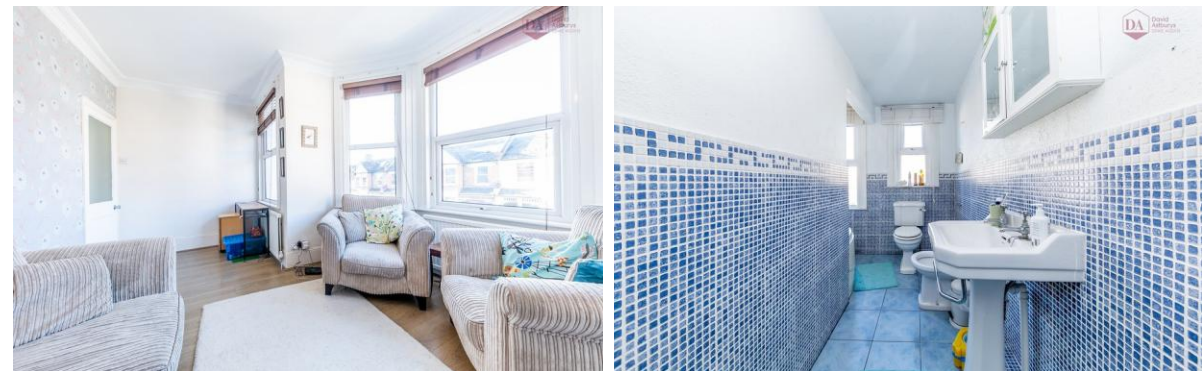
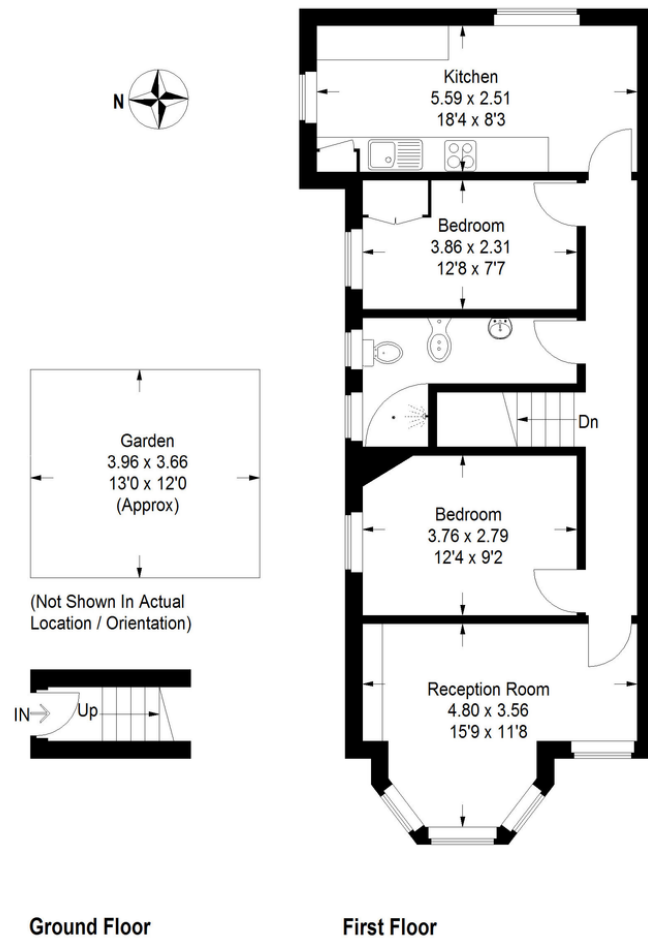
A 727 square foot two double bedroom apartment located on the first floor of this period end of terrace building which boasts its own private entrance and a private garden.

The flat consists of two good sized bedrooms, a reception room with a large bay window and a separate kitchen with dual aspect windows and space for dining.

To be sold with share of freehold and no onward chain.

## North View Road, N8

Approximate Gross Internal Area  
67.5 sq m / 727 sq ft



Measured in accordance with RICS Code of Measuring Practice. To be used for identification and guidance purposes only. Whilst every care is taken in the preparation of this plan, please check all dimensions, shapes and compass bearings before making any decisions reliant upon them. www.davidastburys.co.uk ©2013 davidastburys.co.uk

15 Park Road, Crouch End,  
London, N8 8TE

<http://www.davidastburys.com>  
0203 000 6787  
[crouchend@davidastburys.com](mailto:crouchend@davidastburys.com)

Agents Note: Whilst every care has been taken to prepare these sales particulars, they are for guidance purposes only. All measurements are approximate and for general guidance purposes only and whilst every care has been taken to ensure their accuracy, they should not be relied upon and potential buyers are advised to recheck the measurements.