



PARKVIEW RESIDENCE, 219 BAKER STREET  
MARYLEBONE, NW1  
**£1,725 Per week Fees Apply**

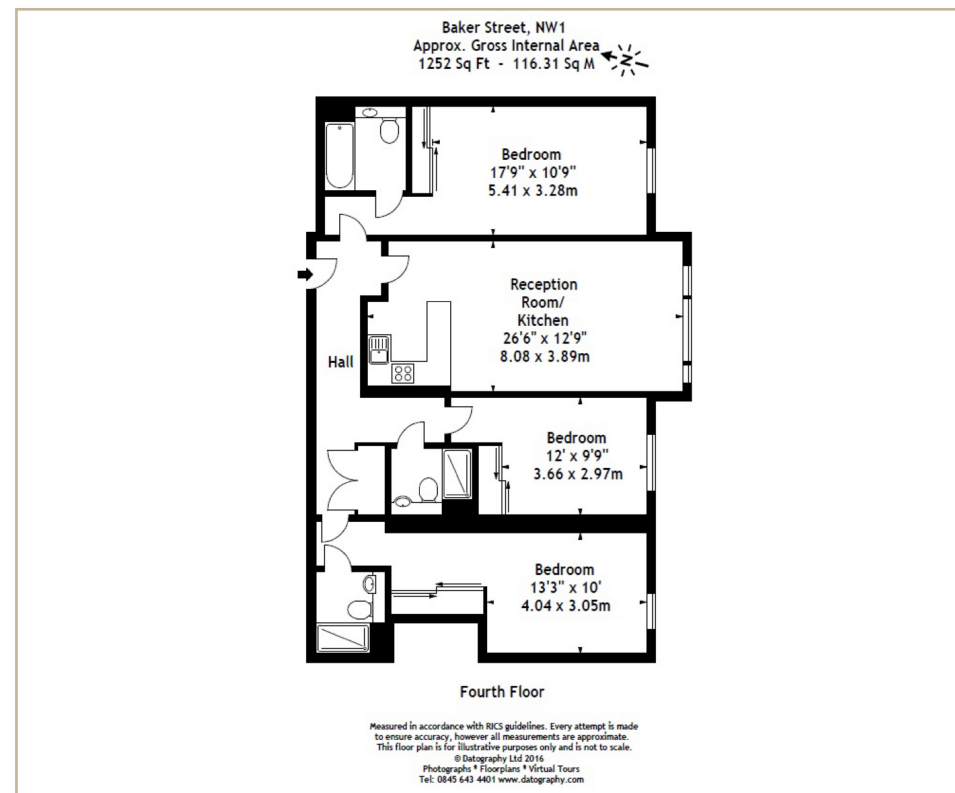
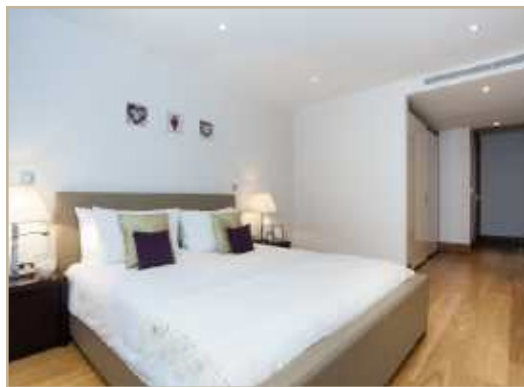
T. +44 (0) 20 7935 0011  
E. [enquire@napierwatt.co.uk](mailto:enquire@napierwatt.co.uk)  
[WWW.NAPIERWATT.CO.UK](http://WWW.NAPIERWATT.CO.UK)

**NAPIER WATT**  
PROPERTY CONSULTANTS

## Description

A three bedroom, three bathroom apartment with oak wood flooring set on the first floor of this landmark building on Baker Street moments from Regents Park and within easy reach of the excellent shopping of Baker Street, The property covers an internal floor space of 1,252 sq.ft/116sq.m. Comprising three bathrooms, reception,

kitchen with the added benefits of CCTV security. Marylebone and the West End. Baker Street tube and Marylebone station are also close by.



Additional costs will apply for; referencing (£36 per person & guarantor); administration (£240); renewal/extensions (£120); check-out inventory & cleaning (variable); special requests (variable). Security Deposits also apply to all tenancies.

T. +44 (0) 20 7935 0011  
E. [enquire@napierwatt.co.uk](mailto:enquire@napierwatt.co.uk)  
[WWW.NAPIERWATT.CO.UK](http://WWW.NAPIERWATT.CO.UK)

**NAPIER WATT**  
PROPERTY CONSULTANTS