

*tavistockbow*

**For Rent**



**People Make Places**



**Rupert Street, Chinatown, W1**

2 bedrooms | 753 sq ft

£765 pw





This beautiful two bedroom, two bathroom (master en-suite) apartment is situated on the first floor (lift) on the Chinatown & Soho borders. The spacious property comprises of a generous reception room with an open-plan kitchen, two double bedrooms with fitted storage and two modern bathrooms.

#### What you need to know

- Two bedrooms
- Two bathrooms
- First floor (with lift)
- Modern
- Wooden floors throughout
- Unfurnished
- Good storage
- Secondary glazing
- Available early March
- Close to Piccadilly Circus and Leicester Square tube station





### Overview

The kitchen is fitted with a large fridge and freezer, an electric hob and a dishwasher with wooden floors throughout, gas heating, secondary glazing and a washer/dryer in a good sized storage space. Available early March on an unfurnished basis. The landlord offers a 3 year contract with mutual rolling 6 months break clause as standard - subject to contract and satisfactory references. Westminster City Council, band G.

### WHAT WE LOVE:

- Moments from amazing Speedboard thai restaurant
- Close to many world renowned Theatres
- Professionally managed
- Arched windows
- Larger than average living room

### WHAT YOU NEED TO KNOW:

- First floor with lift
- Wood flooring throughout
- Above a pub
- Secondary glazing throughout
- Closest tube is Leicester Square and Piccadilly Circus.



**Rupert Street, Chinatown, W1**

# People Make Places

London is collection of inspiring urban villages and one of the most exciting places in the world to live, work & play.

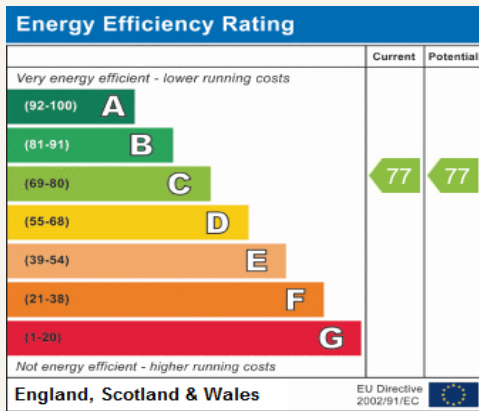
We work with both property owners and their occupiers, sharing the story of these vibrant neighbourhoods, conveying the unique soul & energy to future custodians, the people who'll keep them buzzing.

And unlike many real estate businesses we're not just about buildings, because streets & buildings don't make a neighbourhood.

We're about building relationships, because **people make places**.

MISINTERPRETATION ACT [COPYRIGHT] DISCLAIMER: Tavistock Bow Ltd for themselves and for the vendor(s) of this property whose agents they are, given notice that: 1. These particulars do not constitute, not constitute any part of, an offer or contract. 2. None of the statements contained in these particulars as to the property are to be relied on as statements or representations of fact. 3. Any intending purchaser or lessee must satisfy themselves by inspection or otherwise as to the correctness of each of the statements contained in these particulars. 4. The vendor(s) or lessor(s) do not make or give and neither Tavistock Bow Ltd nor any person in their employment has any authority to make or give any representation or warranty whatever in relation to this property. Finance Act 1989, Unless otherwise stated all prices and rents are quote exclusive of VAT. Property Misrepresentation Act 1991; These details are believed to be correct at the time of compilation but may be subject to subsequent amendment.

Follow us:     @tavistockbow

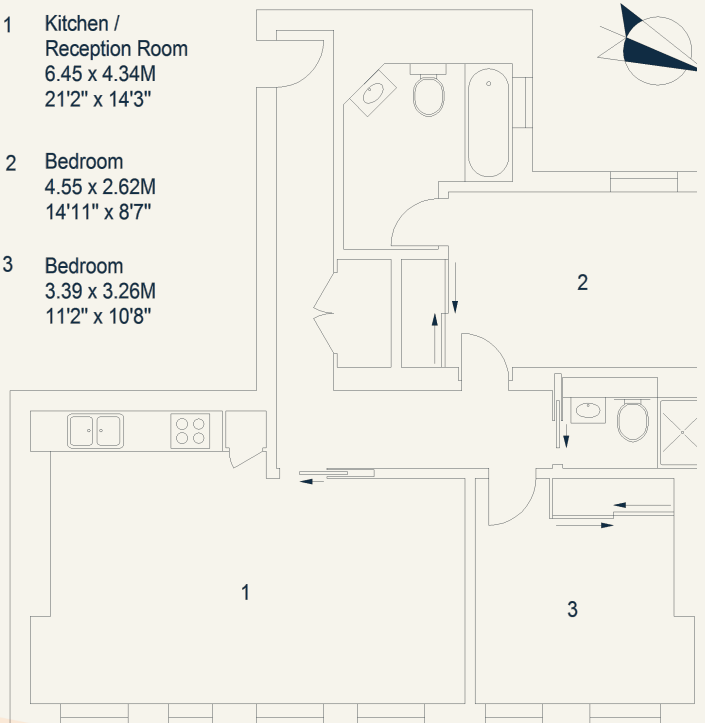


## Rupert Street, W1

Approximate Gross Internal Area 70 sq m / 753 sq ft

### First Floor

- 1 Kitchen / Reception Room  
6.45 x 4.34M  
21'2" x 14'3"
- 2 Bedroom  
4.55 x 2.62M  
14'11" x 8'7"
- 3 Bedroom  
3.39 x 3.26M  
11'2" x 10'8"



Floor Plan produced for Tavistock Bow by Mays Floorplans ©. Tel 020 3397 4594  
Illustration for identification purposes only, not to scale.

**tavistockbow**

21 New Row, Covent Garden,  
London, WC2N 4LE

t: 020 7477 2177  
e: hello@tavistockbow.com  
w: tavistockbow.com



**Rupert Street, Chinatown, W1**