

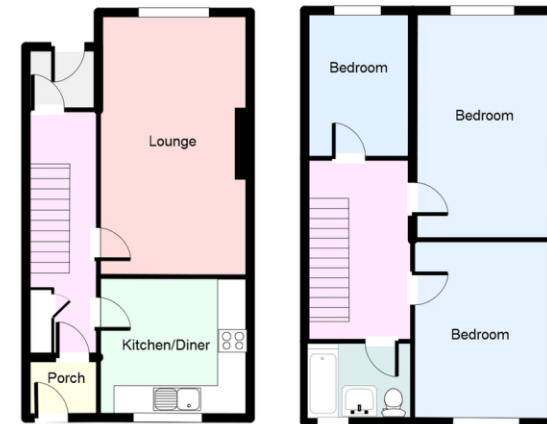


- TWO STOREY MAISONETTE
- LOUNGE & SEPARATE KITCHEN/DINER
- THREE BEDROOMS
- UPSTAIRS BATHROOM

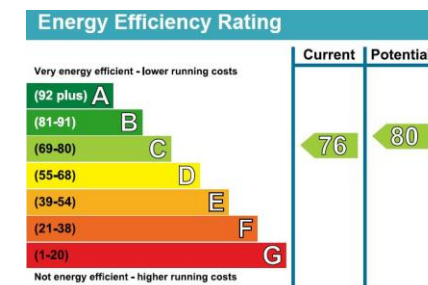
Russett Way, Lewisham, London SE13 7LY

Asking Price Of £375,000

Mark Beaumont estate agents are pleased to be offering this three bedroom split level purpose built flat, ideally located for a short walk to Elversion DLR station and within easy reach of Lewisham BR Station. This property is neutrally decorated throughout, downstairs there is a large lounge dining room, with access to the rear garden leading onto a modern fitted kitchen. Upstairs, there are three good sized bedrooms, a bathroom fully tiled with a shower over the bath and separate WC.



APPROX GROSS INTERNAL FLOOR AREA: 924 sq. ft
Copyright Mark Beaumont Estate Agents



South London Branch, 197
Lewisham High Street, London,
SE13 6AA

www.markbeaumont.com
020 8852 5000
sales@markbeaumont.com

Agents Note: Whilst every care has been taken to prepare these particulars, they are for guidance purposes only. All measurements are approximate are for general guidance purposes only and whilst every care has been taken to ensure their accuracy, they should not be relied upon and potential buyers are advised to recheck the measurements