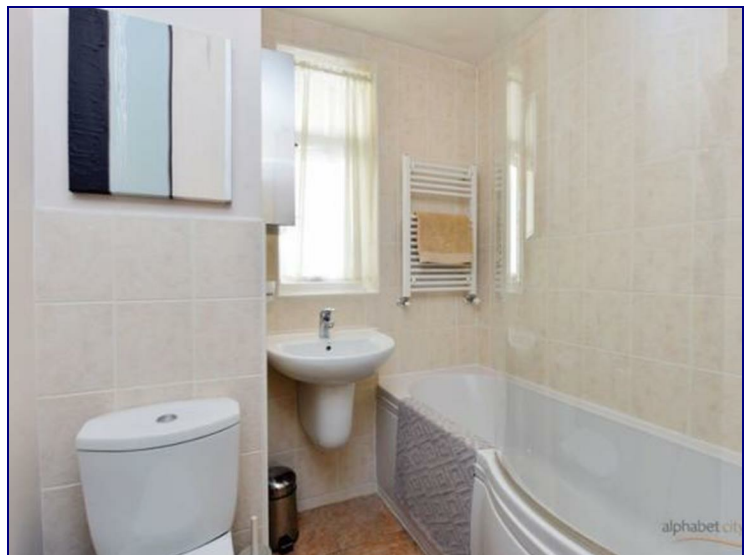


Pigott Street, London, E14 7DW



£700 Per Month

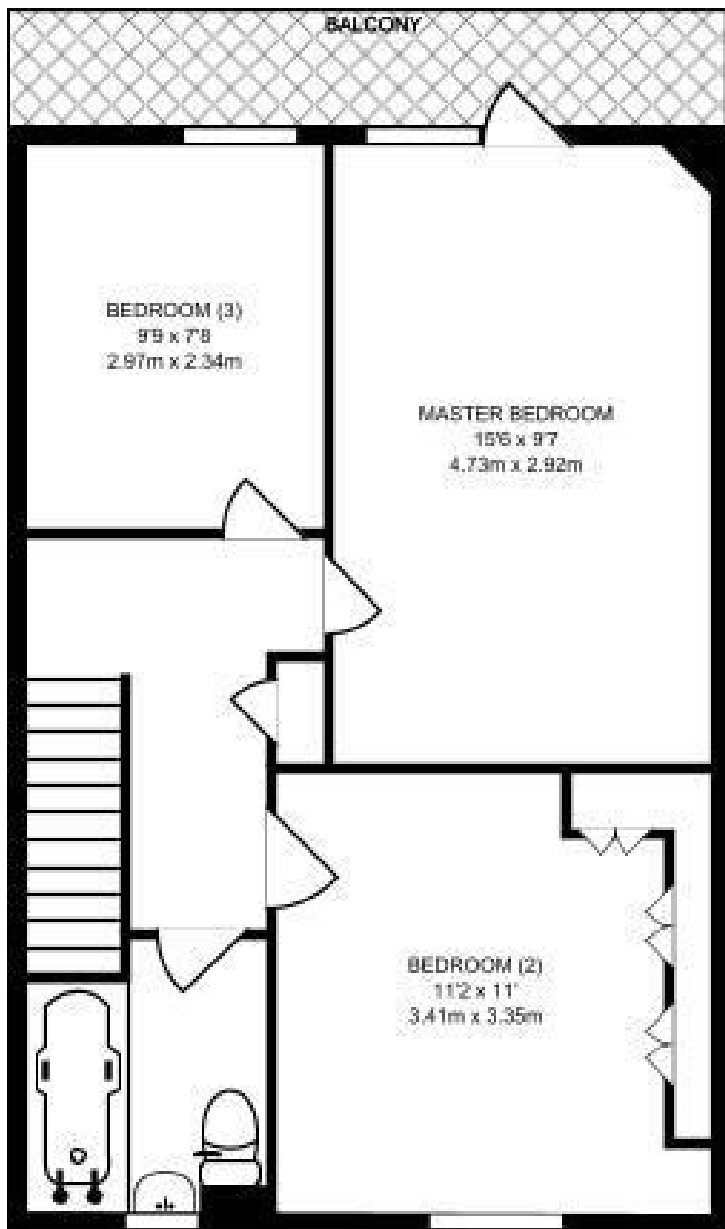
BILLS INCLUDED - GAS, ELECTRICITY, WATER, COUNCIL TAX & WIFI

IN DEMAND, SOUGHT AFTER, ONE BEDROOM IN A FLAT-SHARE, POPLAR, SPACIOUS AND FULLY FURNISHED, Conveniently located for Canary Wharf and the City while local amenities can be found on Poplar High Street and Chrisp Street. AVAILABLE NOW.

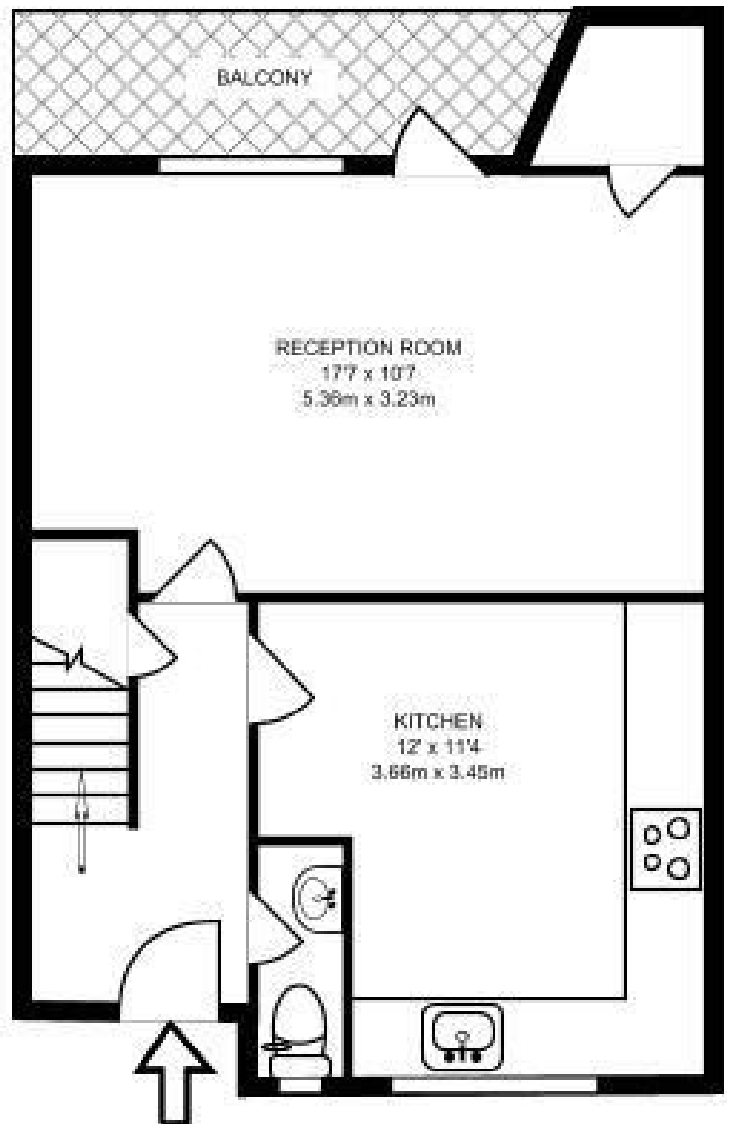
This one bedroom in a flat-share comprises of a large double bedroom, fully furnished with all a double bed and a mattress and a wardrobe. As a flat-share, the kitchen and both bathrooms are shared with quiet and independent flatmates.

Please contact us to arrange a viewing; it's available now.





SECOND FLOOR
460 SQ FT/42.74 SQ M



FIRST FLOOR
389 SQ FT/36.13 SQ M

Energy Efficiency Rating		Current	Potential
Very energy efficient - lower running costs			
(92 plus)	A		
(81-91)	B		
(69-80)	C		
(55-68)	D		
(39-54)	E		
(21-38)	F		
(1-20)	G		
Not energy efficient - higher running costs			
England & Wales		72	78
		EU Directive 2002/91/EC	

Environmental Impact (CO ₂) Rating		Current	Potential
Very environmentally friendly - lower CO ₂ emissions			
(92 plus)	A		
(81-91)	B		
(69-80)	C		
(55-68)	D		
(39-54)	E		
(21-38)	F		
(1-20)	G		
Not environmentally friendly - higher CO ₂ emissions			
England & Wales			
		EU Directive 2002/91/EC	

