



81 Black Prince Road, Nine Elms  
London SE1

GARTONJONES.COM



81 Black Prince Road, Nine Elms  
London, SE1

GARTON JONES.COM

9 Albert  
Embankment  
London  
SE1 7SP

Sales +44 (0) 20 7735 1888  
nineelms@gartonjones.com  
www.gartonjones.com

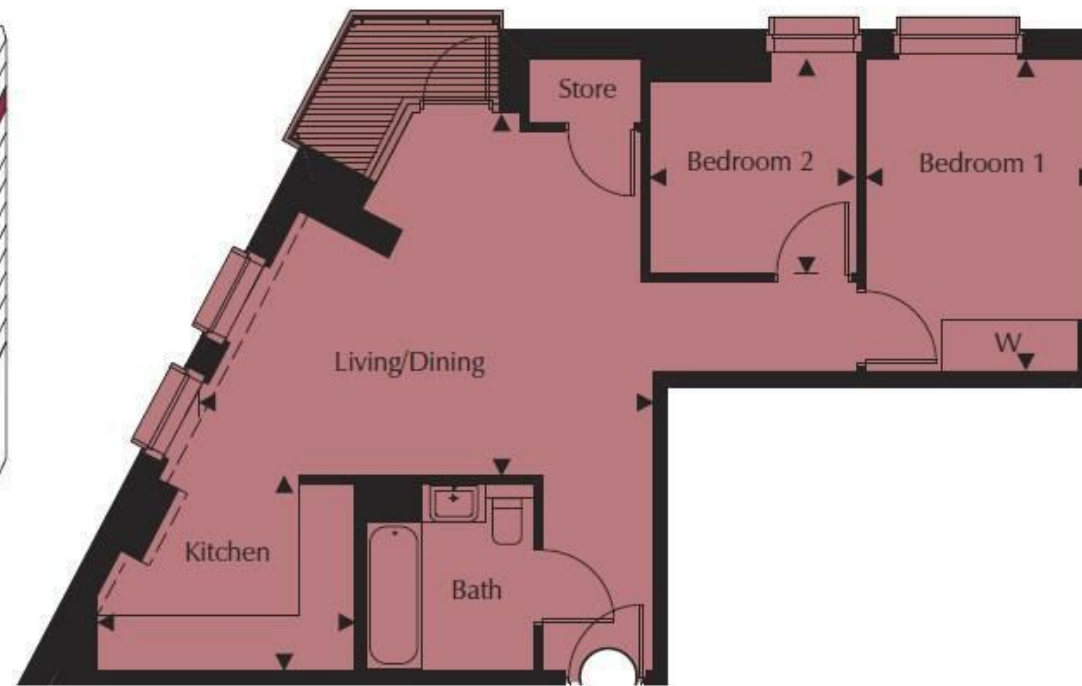
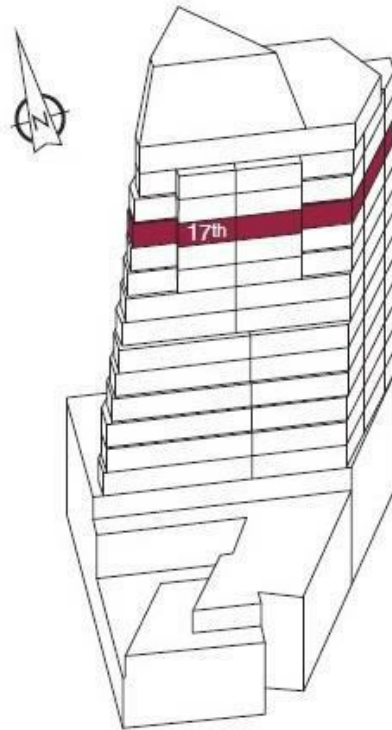
£545 Per Week

A two double bedroom apartment of 581sq.ft (54sq.m) located on the 17th floor of Parliament House, offering amazing views of the city, River Thames and Parliament. The apartment has been furnished to a high standard and comprises an open plan reception room, modern integrated kitchen, two double bedrooms, luxury bathroom and great storage. Residents also enjoy a concierge service, exclusive gymnasium, designer interiors and cycle storage. Parliament House is a 23 storey tower within easy reach of the excellent transport services of Vauxhall including rail, tube and bus links as well as a river taxi pier at St George Wharf. London's trendy South Bank is also close by. Offered furnished and available January, to arrange a viewing please call 020 7735 1888.

- 2 Double Bedrooms
- 1 Luxury Bathroom
- 581sq.ft (54sq.m)
- 17th Floor (with lift) of 23
- North facing aspect
- Open Plan Reception Room with Modern Integrated Kitchen
- Concierge Residents Gymnasium and Cycle storage
- Vauxhall Rail/Tube & Bus Services Moments Away
- Available end of February



EPC certificate available on request.



Kitchen	3.02m x 2.30m	9'10" x 7'6"
Living/Dining	5.30m x 4.25m	17'4" x 13'11"
Bedroom 1	3.67m x 2.72m	12'0" x 8'11"
Bedroom 2	2.52m x 2.43m	8'3" x 7'11"
<b>Total Area</b>	<b>54 sq m</b>	<b>581 sq ft</b>



