



Palace View, London
London SE1

GARTONJONES.COM



Palace View, London London, SE1

GARTON JONES.COM

9 Albert
Embankment
London
SE1 7SP

Lettings:
+44 (0) 20 7735 1888
nineelms@gartonjones.com
www.gartonjones.com

£590 Per Week

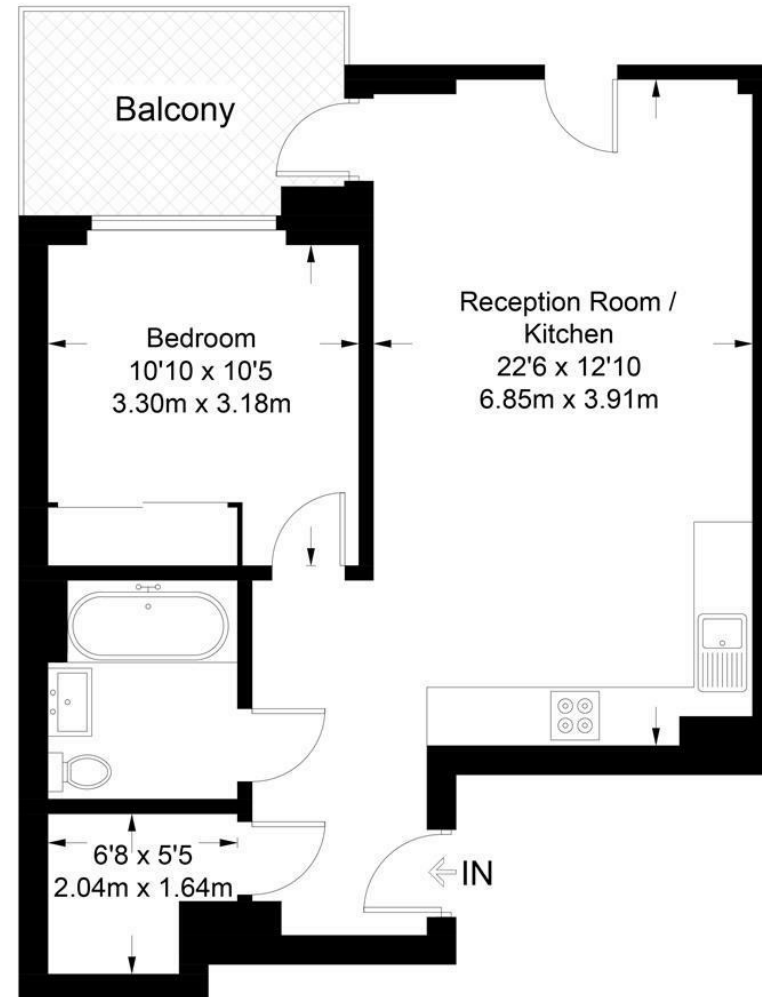
A spacious 1 double bedroom apartment of approx. 560sq.ft (52sq.m.) on the 5th floor (with lift) of Palace View. The property has an open plan reception room with a smart integrated kitchen, floor to ceiling windows, a luxury bathroom suite and a balcony. Located on the banks of the River Thames close to Big Ben and Houses of Parliament, Palace View offers the highest standard of living combined with having London's vibrant Southbank with all its shops, restaurants and attractions right on your doorstep. The residents' facilities at Palace View include a state of the art gymnasium, cinema, bike storage, a large roof terrace and 24 hour concierge service.

- 560sq.ft (52sq.m)
- 6th Floor (With Lift) of 8 Floors
- 1 Double Bedroom, Luxury Bathroom Suite
- Open Plan Reception Room with a Smart Integrated Kitchen
- Balcony
- 24 Hour Concierge
- Residents Gymnasium
- Cinema & Roof Terrace
- Close to Local Transport links of Westminster, Waterloo and Vauxhall



Palace View

Approximate Gross Internal Area = 565 sq ft / 52.5 sq m



Fifth Floor

Not to scale, for guidance only and must not be relied upon as a statement of fact.
All measurements and areas are approximate only and have been prepared in accordance with the current edition of the RICS Code of Measuring Practice.

