



803 sq
ft



3



1



2

REDBRIK
ESTATE AGENTS



Helping you find
your home at...

Deerpark Crescent, Wingerworth, Chesterfield

£725 pcm

Located on a quiet road in the sought after village location of Wingerworth is this beautifully presented and contemporary styled three bedroom semi-detached house.

- Three Bedroom Semi Detached House
- Fabulous Open-Plan Dining/ Kitchen With Patio Doors To The Garden
- Spacious Lounge
- Modern Shower Room With White Suite & Walk In Shower
- Low Maintenance Grounds
- Off-Street Parking For Numerous Cars & Garage
- No Smokers, No Pets
- Sought After Location
- Suit Professionals, Unfurnished
- Energy Rating - E.

Ideally suited to modern living the property provides well ordered, neutrally decorated accommodation set across two levels, low maintenance enclosed rear garden and ample off street parking with garage. Ideally placed a short distance from shops, amenities, parks and renowned schools. Holding deposit applies on application equivalent to one weeks rent.

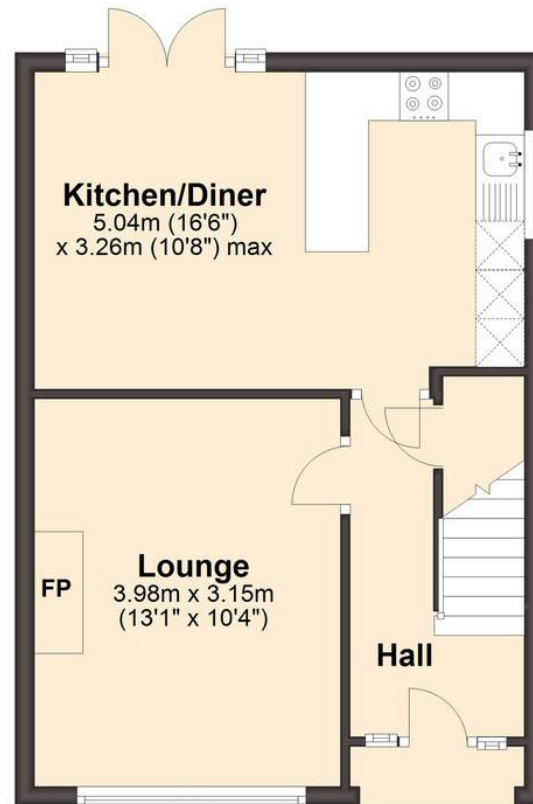




We endeavour to make these particulars as accurate as possible, but they should only be used as guidance and they do not constitute any part of the contract. All measurements are approximate and no guarantees are made to the services, heating systems, appliances (if any) or fittings as to their working order and no warranty can be given or implied.

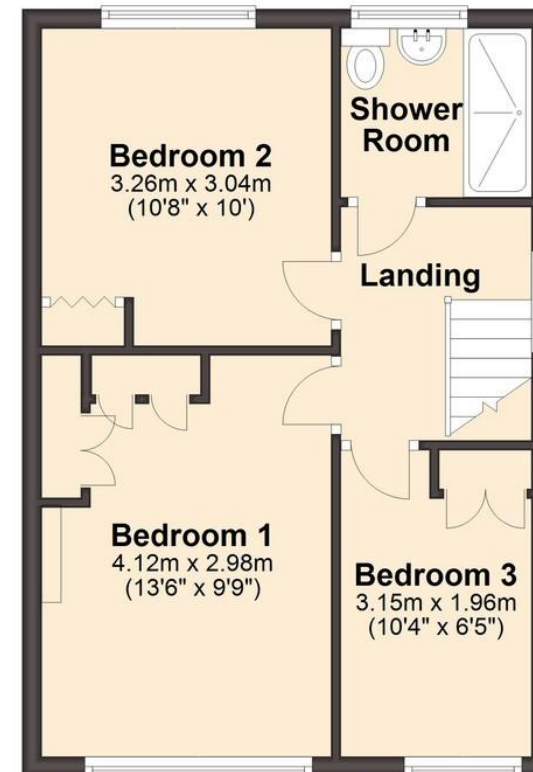
Ground Floor

Approx. 37.0 sq. metres (398.0 sq. feet)



First Floor

Approx. 37.7 sq. metres (405.6 sq. feet)



Total area: approx. 74.7 sq. metres (803.6 sq. feet)

You may download, store and use this material for your own personal use and research. You may not republish, retransmit, redistribute or otherwise make the material available to any party or make the same available on any website, on or off line service or hard copy without the website owner's express written consent. The website owner's copy right must remain on all reproductions of material taken from this website.

