

For Rent



People Make Places



Newport Court, Chinatown WC2

2 bedrooms | 624 sq ft

£679 pw





This two bedroom flat is situated on the top floor within Chinatown. The flat features two double bedrooms, separate kitchen, reception room and shower room. Please note this property is only suitable for two sharers, a couple or family members.

What you need to know

- Two bedrooms
- Shower room
- Top floor (3rd)
- Walk up
- Laminate Flooring
- Unfurnished
- Separate kitchen
- Central Chinatown
- Available immediately
- Close to Leicester Square tube





Overview

Available immediately on an unfurnished basis. The landlord offers as standard and subject to contract and satisfactory references, a 3 year contract with a rolling 6 months mutual break clause. Westminster City Council tax band E.

Located on the top floor (3rd floor, walk up) of a period building in Chinatown. There is a modern shower room and a separate fully fitted kitchen.

Chinatown is a vibrant enclave where East meets West, nestled between Soho, Leicester Square, Piccadilly Circus and Covent Garden. A captivating oasis of Asian cuisine and culture, adorned with ornate Chinese gates and colourful lanterns.



People Make Places

London is collection of inspiring urban villages and one of the most exciting places in the world to live, work & play.


We work with both property owners and their occupiers, sharing the story of these vibrant neighbourhoods, conveying the unique soul & energy to future custodians, the people who'll keep them buzzing.

And unlike many real estate businesses we're not just about buildings, because streets & buildings don't make a neighbourhood.

We're about building relationships, because **people make places**.

MISINTERPRETATION ACT (COPYRIGHT) DISCLAIMER: Tavistock Bow Ltd for themselves and for the vendor(s) of this property whose agents they are, given notice that: 1. These particulars do not constitute, not constitute any part of, an offer or contract. 2. None of the statements contained in these particulars as to the property are to be relied on as statements or representations of fact. 3. Any intending purchaser or lessee must satisfy themselves by inspection or otherwise as to the correctness of each of the statements contained in these particulars. 4. The vendor(s) or lessor(s) do not make or give and neither Tavistock Bow Ltd nor any person in their employment has any authority to make or give any representation or warranty whatever in relation to this property. Finance Act 1989, Unless otherwise stated all prices and rents are quote exclusive of VAT. Property Misrepresentation Act 1991. These details are believed to be correct at the time of compilation but may be subject to subsequent amendment.

Follow us:     @tavistockbow

Energy Efficiency Rating		Current	Potential
Very energy efficient - lower running costs			
(92-100)	A		
(81-91)	B		
(69-80)	C		79
(55-68)	D	66	
(39-54)	E		
(21-38)	F		
(1-20)	G		
Not energy efficient - higher running costs			
England, Scotland & Wales		EU Directive 2002/91/EC 	

Newport Court, WC2

Approximate Gross Internal Area 58 sq m / 624 sq ft



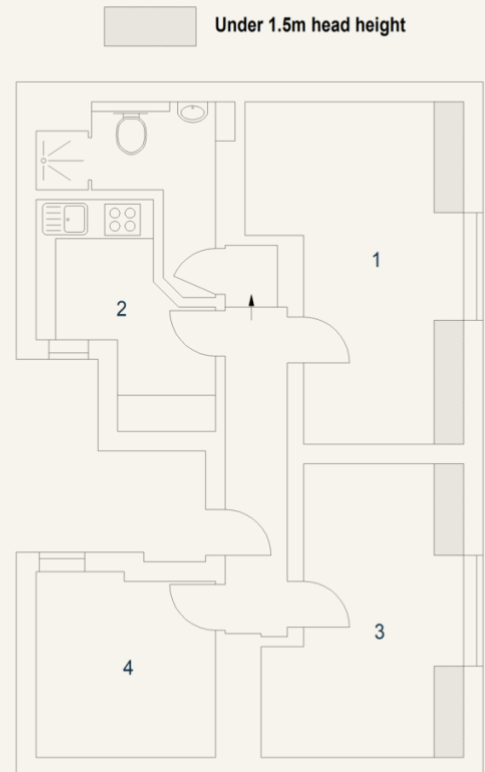
Third Floor

1 Reception Room
5.26 x 3.38M
17'3" x 11'1"

2 Kitchen
3.62 x 1.81M
11'11" x 5'11"

3 Bedroom
4.49 x 3.10M
14'9" x 10'2"

4 Bedroom
2.86 x 2.75M
9'5" x 9'



Floor Plan produced for Tavistock Bow by Mays Floorplans ©. Tel 020 3397 4594
Illustration for identification purposes only, not to scale.

tavistockbow

21 New Row, Covent Garden,
London, WC2N 4LE

t: 020 7477 2177
e: hello@tavistockbow.com
w: tavistockbow.com



Newport Court, Chinatown WC2