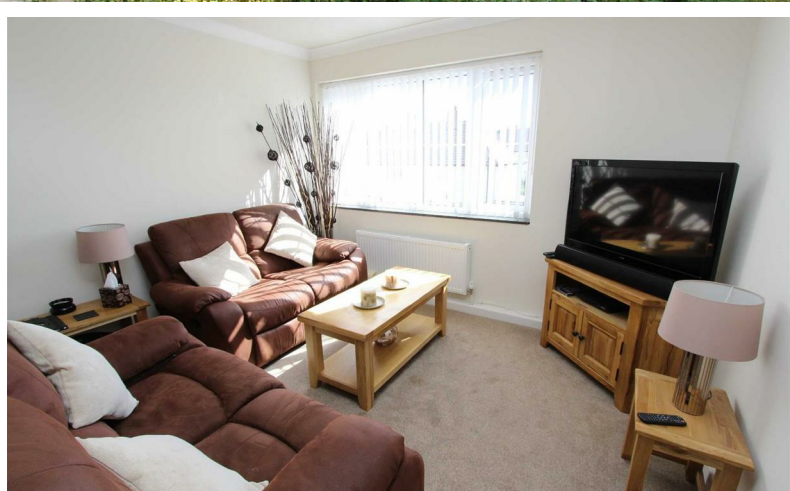




# RIDGEWAY

## RESIDENTIAL SERVICES



**£695 PCM**

Waterbridge Court, Flat 16 Thornley Close, Lymm, Cheshire, WA13 0EL

# Waterbridge Court, Flat 16 Thornley Close, Lymm, Cheshire, WA13 0EL

A two bedroom apartment in a popular location close to Lymm village, with well maintained communal gardens running towards the Bridgewater Canal. The property comprises of; living/dining room, bathroom with shower, fitted kitchen. 2 Bedrooms, Unfurnished. Allocated Parking. No Pets. Available 21/12/19

## Credit References and Deposit

Prospective tenants will be required to complete a credit referencing application payable whether successful or not. Prior to taking occupation of the property you will be required to pay a deposit of 1½ times the monthly rent, the first months rent in advance and an administration fee.

## Directions

