



SITUATED IN THE HEART OF RICKMANSWORTH

Penn Place, Solomon's Hill, Rickmansworth, Herts WD3 1GY



SITUATED IN THE HEART OF RICKMANSWORTH

Penn Place, Solomon's Hill, Rickmansworth, Hertfordshire, WD3 1GY

- KITCHEN
- RECEPTION ROOM
- MASTER BEDROOM WITH EN-SUITE
- FURTHER BEDROOM
- BALCONY WITH STUNNING VIEWS
- GARAGE
- CONCIERGE
- GYM
- TOWN CENTRE LOCATION
- CLOSE TO RICKMANSWORTH STATION

Description

A two bedroom apartment situated within central Rickmansworth, convenient for Rickmansworth Railway Station and the High Street. A light and spacious first floor apartment that briefly comprises an entrance hallway with storage, two bedrooms one with an en-suite, a kitchen with ample storage and a bathroom.





Residents also enjoy the use of the gym on the ground floor at the main entrance. There is also a concierge on site 6 days a week. The apartment also benefits from a balcony with stunning views and a garage below with up and over door.

Location

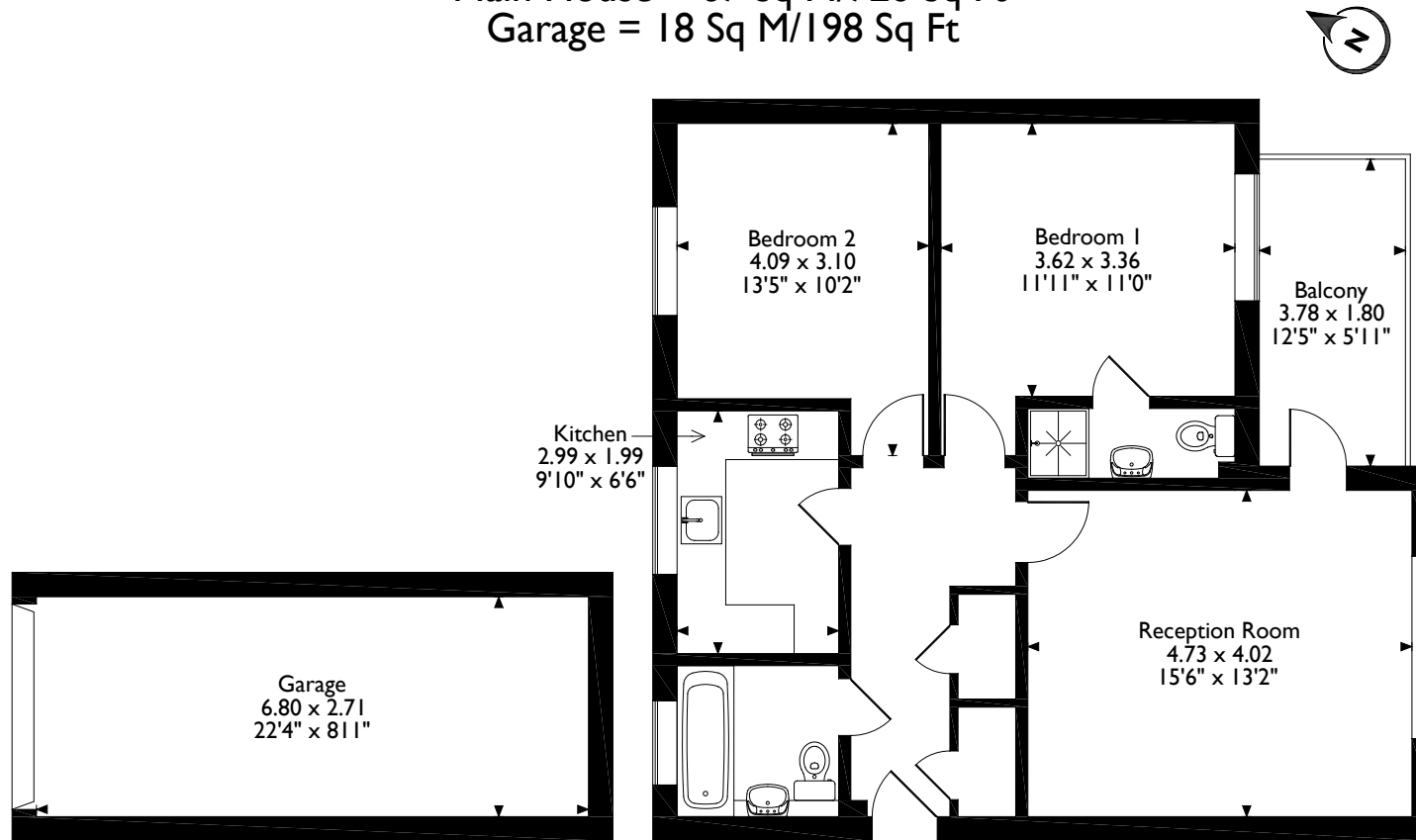
Rickmansworth town centre is within easy reach providing a wide choice of boutique shops, coffee houses, restaurants and major supermarkets. The Metropolitan and Chiltern train lines connect to London Baker Street and beyond. The M25 motorway is available at Junction 18 connecting to the national motorway network. Major airports are also within reach. The area is well served for good quality private and state schools for all ages. Chorleywood offers everything for a sporting life, from cricket, football, tennis, horse riding and golf. Water sports are also available at the Aquadrome in Rickmansworth.

Additional Information

Tenure: Leasehold
Service Charge: £2,900 pa
Ground Rent: £288.00 pa
Local Authority: Three Rivers District Council
Council Tax Band: D
Energy Efficiency Rating: Band C



Penn Place Solomons Hill, Rickmansworth, Hertfordshire
Approximate Gross Internal Area
Main House = 67 Sq M/726 Sq Ft
Garage = 18 Sq M/198 Sq Ft



First Floor

Please note that the location of doors, windows and other items are approximate and this floorplan is to be used for illustrative purposes only. Unauthorized reproduction is prohibited.

ROBSONS

Address: 130 High Street, Rickmansworth, Hertfordshire, WD3 1AB

Tel: 01923 777762 Email: Rickmansworth@robsonswb.com

www.robsonswb.com