

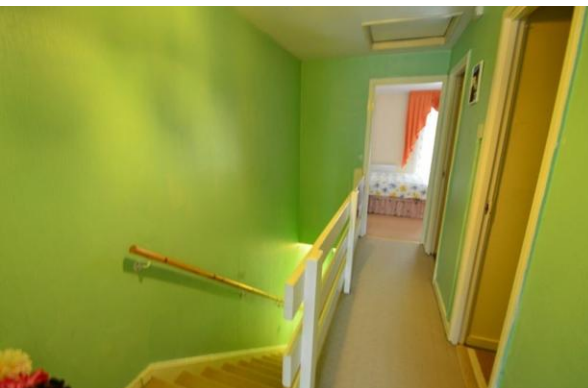
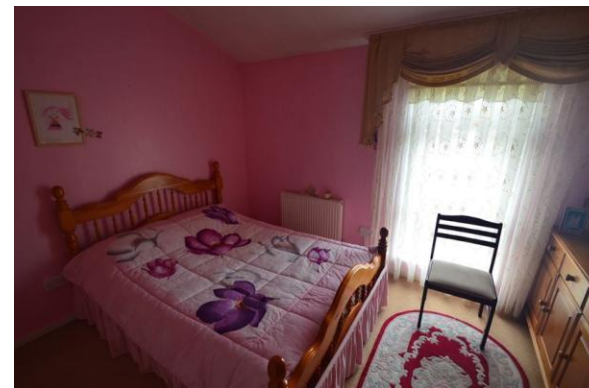



- 2 bedrooms
- 1st Floor bathroom
- 1970s Built House
- Separate w.c

Pattison Walk, London, SE18 7EY

Asking Price Of £350,000

Situated within easy reach of Woolwich Town Centre, Station, DLR, and Crossrail (2018) is this 2 bedroom 1970's built house. This property is double glazed, has a 1st floor bathroom, and a 19ft kitchen/ diner. The property also has central heating, a ground floor w.c and is offered chain free.



Energy Efficiency Rating		
	Current	Potential
Very energy efficient - lower running costs		
(92 plus) <b>A</b>		
(81-91) <b>B</b>		
(69-80) <b>C</b>	75	76
(55-68) <b>D</b>		
(39-54) <b>E</b>		
(21-38) <b>F</b>		
(1-20) <b>G</b>		
Not energy efficient - higher running costs		
<b>England &amp; Wales</b>	EU Directive 2002/91/EC 	

South London Branch, 197  
Lewisham High Street, London,  
SE13 6AA

[www.markbeaumont.com](http://www.markbeaumont.com)  
020 8852 5000  
[sales@markbeaumont.com](mailto:sales@markbeaumont.com)

Agents Note: Whilst every care has been taken to prepare these particulars, they are for guidance purposes only. All measurements are approximate and for general guidance purposes only and whilst every care has been taken to ensure their accuracy, they should not be relied upon and potential buyers are advised to recheck the measurements.