

Copse Avenue, Swindon, Wiltshire, SN1 2PW

An immaculately presented one bedroom ground floor flat located in the outskirts of the Town Centre. The property has been completely modernized throughout and the owner has also extended the lease which makes it ideal for first time purchasers.

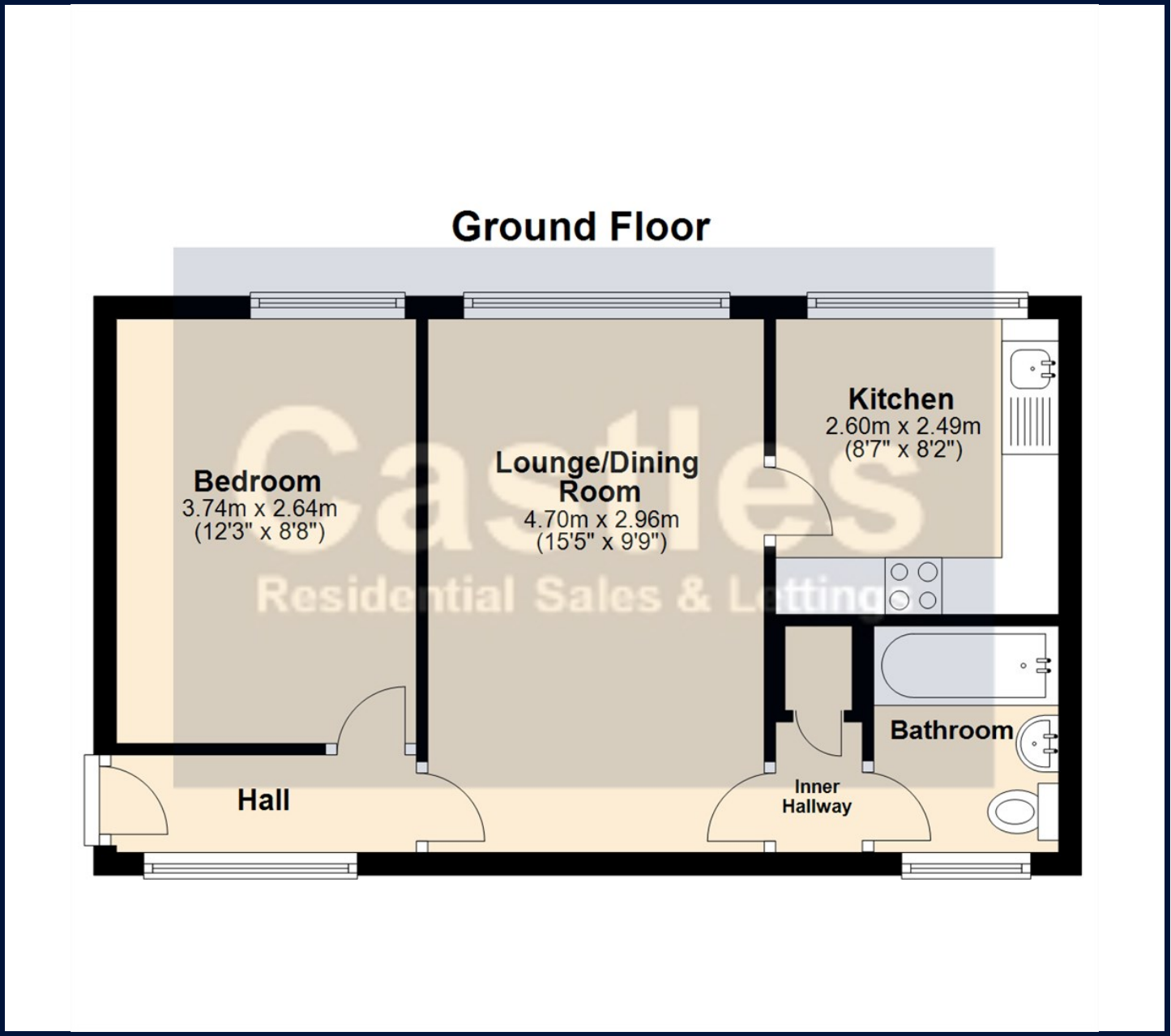
Investment landlords will also be interested with the property likely to achieve between £575 -£595pcm.


The accommodation offers an entrance hall, 15ft lounge/diner, 8ft re-fitted kitchen, 12ft bedroom and re-fitted bathroom. Outside are communal gardens and a single garage, further benefits include electric heaters and UPVC double glazed windows.


- Ground Floor Apartment
- One Double Bedroom
- 15ft Lounge/diner
- 8ft Re-fitted Kitchen
- Re-fitted Bathroom
- Garage
- Extended Lease
- EPC Rating: E

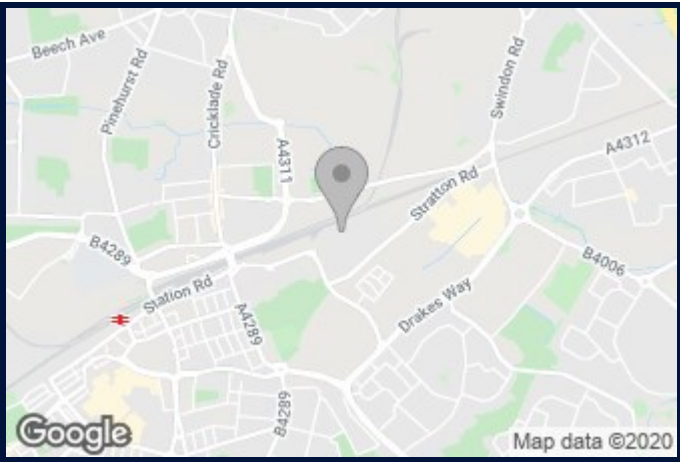
£95,000





Energy Efficiency Rating		
	Current	Potential
Very energy efficient - lower running costs		
(92 plus) A		77
(81-91) B		
(69-80) C		
(55-68) D	50	
(39-54) E		
(21-38) F		
(1-20) G		
Not energy efficient - higher running costs		
England & Wales		EU Directive 2002/91/EC 

Environmental Impact (CO ₂) Rating		
	Current	Potential
Very environmentally friendly - lower CO ₂ emissions		
(92 plus) A		62
(81-91) B		
(69-80) C		
(55-68) D	55	
(39-54) E		
(21-38) F		
(1-20) G		
Not environmentally friendly - higher CO ₂ emissions		
England & Wales		EU Directive 2002/91/EC 



Council Tax Band: A

Viewing

For further information on this property or to arrange a viewing please contact Castles Estate Agents on 01793 611677

These particulars, whilst believed to be accurate are set out as a general outline only for guidance and do not constitute any part of an offer or contract. Intending purchasers should not rely on them as statements of representation of fact, but must satisfy themselves by inspection or otherwise as to their accuracy. No person in this firms employment has the authority to make or give any representation or warranty in respect of the property.