



BUTLER & STAG

Usher Road | Bow
| E3

Guide Price £650,000 - £675,000

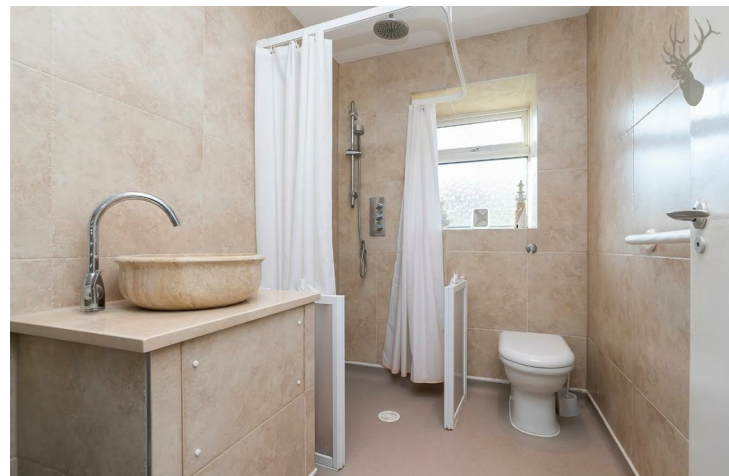
Rare to the market is this three storey, four bedroom freehold house set within this residential no-through road just off Roman Road market. Offered chain free.

• Freehold House • Three Storeys • Own Driveway • Private South-West Facing Garden • Four Double Bedrooms • Versatile Layout • Close To Victoria Park • Good Transport Links • Residential No-Through Road • Chain Free

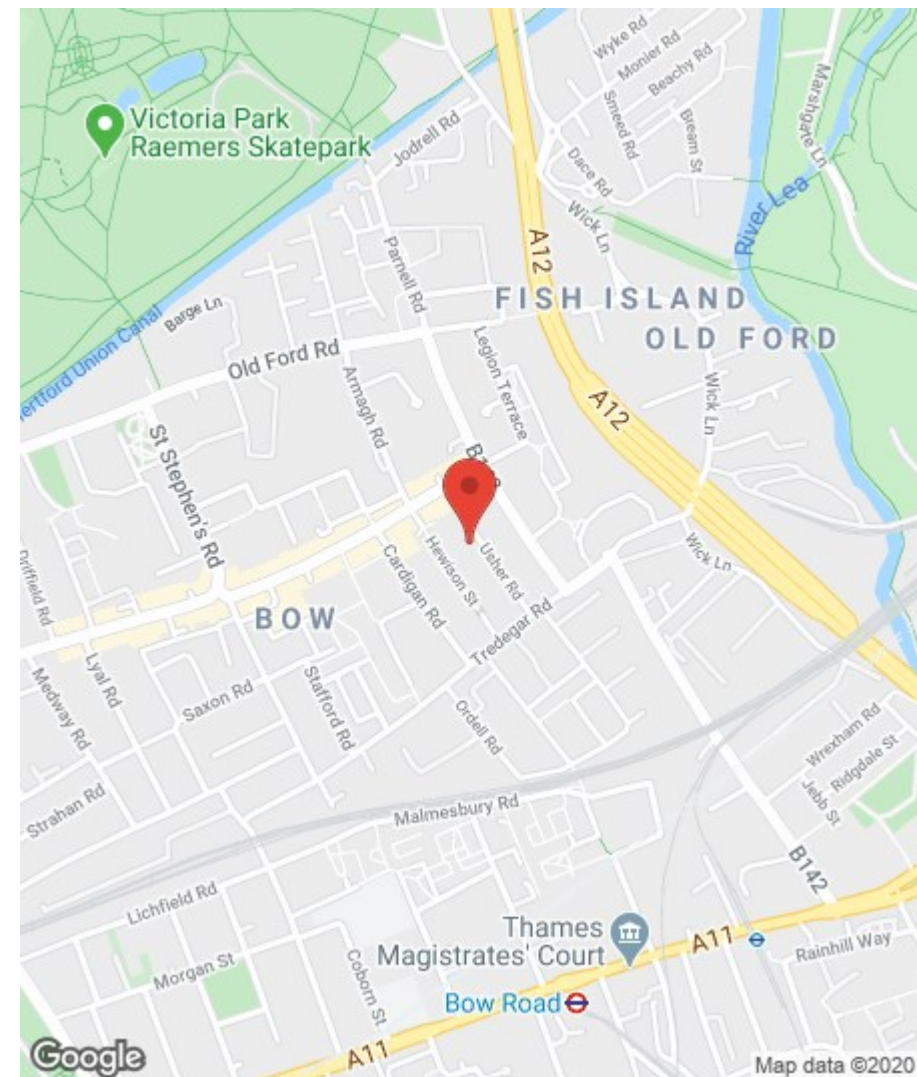
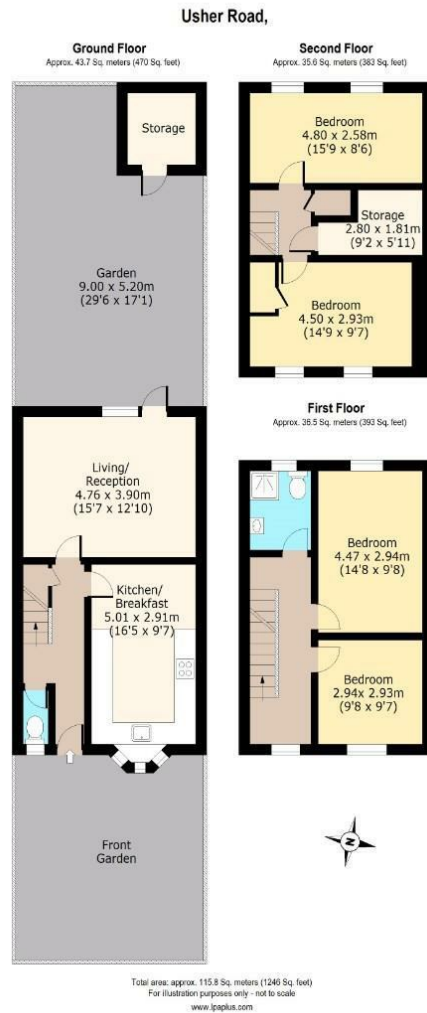
Price Guide £650,000 / Freehold

Entering via a private driveway, the ground floor comprises of an eat-in kitchen, w/c and a separate reception leading to a private south-west facing garden. Stairs lead up to two double bedrooms and master bathroom, whilst the top floor hosts two further double bedrooms and a useful storage space. Benefiting from a versatile layout the property befits those looking to implement their own ideas and tastes through a cosmetic refurbishment.

Usher Road is set on a no-through road just moments from vibrant Roman Road and Hackney Wick and within easy reach of the open green spaces of Victoria Park and the Queen Elizabeth Olympic Village. Centrally located to a host of transport links to include Mile End and Bow Road Underground Stations and the Number 8 bus route.







BUTLER & STAG

508 Roman Road, Bow, London, E3 5LU | 020 8102 1236 |
bow@butlerandstag.com | www.butlerandstag.uk

Important Notice - These particulars have been prepared in good faith and they are not intended to constitute part of an offer or contract. We have not performed a structural survey on this property and the services, appliances and specific fittings have not been tested. All photographs, measurements, floor plans and distances referred to are given as a guide and should not be relied upon.

