



WOOD & PILCHER



- Second Floor Apartment
- Two Bedrooms
- Master With En-suite
- Open Plan Living Space
- Undercroft Parking Space
- Energy Efficiency Rating: C

Cannons Wharf, Tonbridge

£270,000

woodandpilcher.co.uk

**Piazza House, Cannons Wharf,
Tonbridge, Kent TN9 1FH**

**Entrance Hall - Open Plan Living Space -
Kitchen Area - Master Bedroom With En-
suite - Further Bedroom - Bathroom -
Balcony - One Undercroft Parking Space -
Communal Garden**

Second floor, two bedroom apartment with an undercroft parking space and attractive communal gardens. En-suite to master bedroom, family bathroom and balconied open plan living space with modern kitchen and views over the river.

ENTRANCE HALL:

Radiator, airing and additional storage cupboard.

OPEN PLAN LIVING SPACE:

Double glazed Juliet balcony and double glazed door to walk out balcony, radiator.

KITCHEN:

Range of eye and base level units incorporating bowl and a half single drainer sink unit with mixer tap; built in 'Smeg' oven and hob with extractor fan over; integrated 'Smeg' washing machine and fridge freezer; cupboard housing boiler.

MASTER BEDROOM:

Double glazed door to balcony, radiator, built-in wardrobe.

EN-SUITE:

Partially tiled walls; pedestal wash hand basin with mixer tap; low level W/C; shower cubicle; extractor fan.

BEDROOM:

Double glazed window, radiator.

BATHROOM:

Partially tiled walls; heated towel rail; pedestal wash hand basin with mixer tap; low level W/C; panel enclosed bath with mixer tap and shower unit over; extractor fan.

OUTSIDE:

Private balcony with views overlooking the river. Attractive communal gardens, bike shed and one allocated parking space.



SITUATION:

The property is situated in the vibrant town of Tonbridge which offers an eclectic mixture of bars, restaurants, shops and of course Tonbridge train station offering fast and frequent services to central London. The town is well served regarding schooling for all ages with a wide range of primary, secondary, grammar and a number of public schools. Recreational facilities in and around Tonbridge include Haysden country park, rowing and river activities, Tonbridge indoor/outdoor swimming pools, Angel leisure centre, the annual summer carnival; plus the historic Tonbridge castle which offers many more activities and numerous popular yearly events.

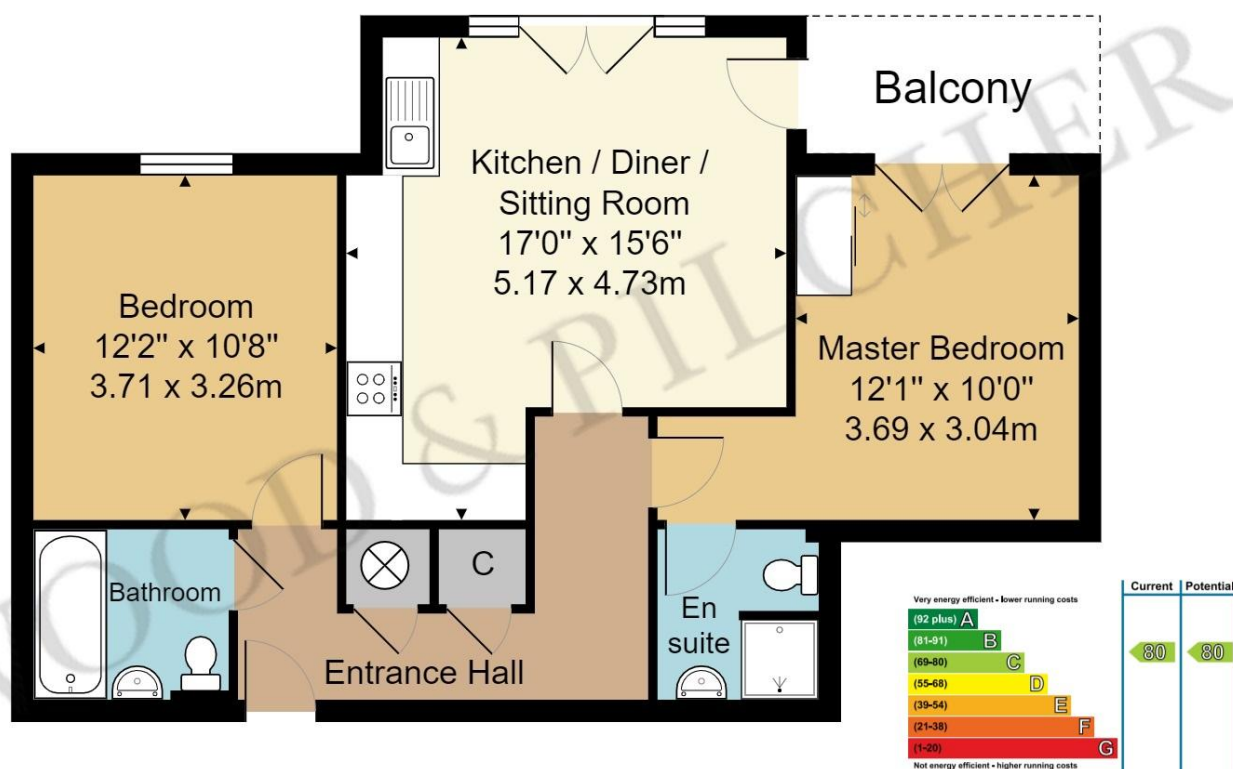
TENURE:

Leasehold.

VIEWING:

By appointment with Wood & Pilcher on 01732 351135.





Approx. Gross Internal Area 693 ft² ... 64.4 m²

Wood & Pilcher, their clients and any joint agents give notice that: They have no authority to make or give any representations or warranties in relation to the property. Any statements on which a purchaser or Tenant wishes to rely must be checked through their Solicitors or Conveyancers. These Particulars do not form part of any offer or contract and must be independently verified. The text, photographs and floor plans are for guidance only and are not necessarily comprehensive, please also note that not everything in the photographs may be included in the sale. It should not be assumed that the property has necessary planning, Building Regulations or other consents. We have not tested any appliances, services, facilities or equipment and Purchasers or Tenants must satisfy themselves as to their adequacy and condition. We have not investigated the Title, or their existence of any Covenants or other legal matters which may affect the property.

Tonbridge 01732 351135
 Heathfield 01435 862211
 Crowborough 01892 665666
 Southborough 01892 511311
 Tunbridge Wells 01892 511211
 Letting & Management 01892 528888
 Associate London Office 02070 791568

