



HADLEIGH
PROPERTY . PERSONALLY

76 Hampton Court Road, Harborne,
B17 9AF
£275,000 Freehold



2



2



1

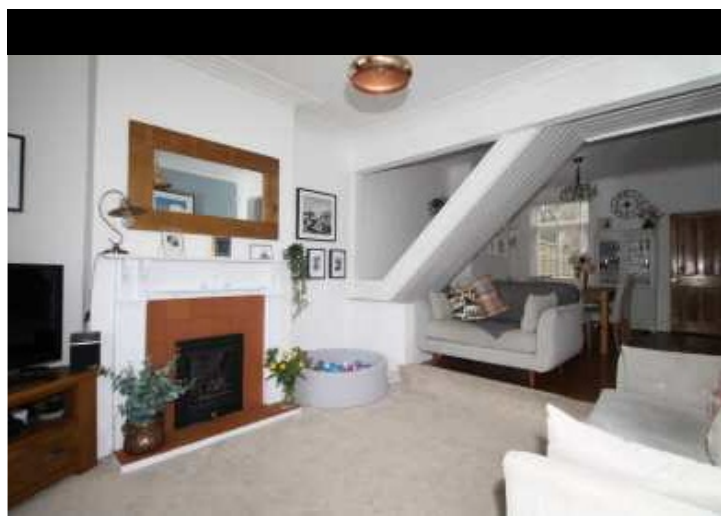


0



Living Area

- TWO DOUBLE BEDROOMS SEPARATE LIVING AND DINING SPACE BEAUTIFULLY DESIGNED REAR GARDEN UPSTAIRS BATHROOM



Dining Area



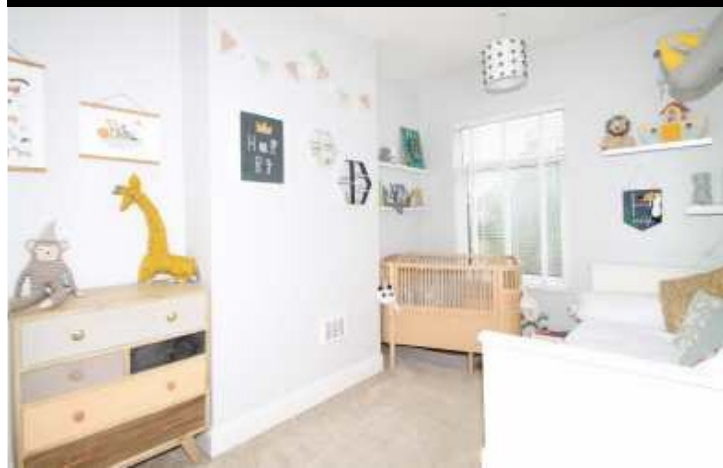
Kitchen



Bedroom One



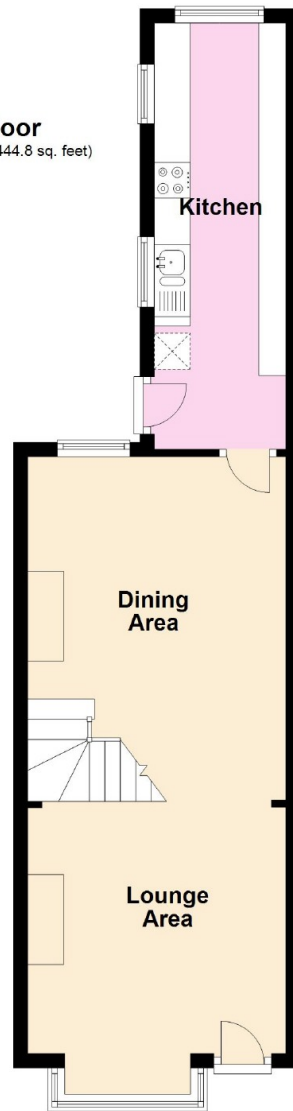
Bedroom Two



Family Bathroom



Ground Floor
Approx. 41.3 sq. metres (444.8 sq. feet)

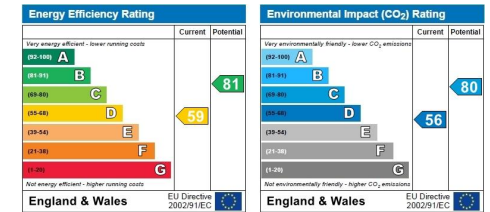


First Floor
Approx. 36.3 sq. metres (390.8 sq. feet)



Total area: approx. 77.6 sq. metres (835.6 sq. feet)

EPC rating



HADLEIGH

PROPERTY . PERSONALLY

Putting your property up for sale is a major decision - once you have taken that step, we will ensure that your home is marketed to its best advantage to achieve the best result.

WE PROVIDE

Competitive commission rates with 'no sale no fee' arrangement

Realistic professional valuations and marketing advice

A service tailored to your needs

Accompanied viewings if required with all viewings followed up

Prestigious advertising, editorial and virtual tours

A refreshing proactive sales approach including an extensive database of active purchasers

All offers financially qualified

