

64 – 68 Norwich Avenue West ~ Bournemouth ~ BH2 6DH

£750 PCM



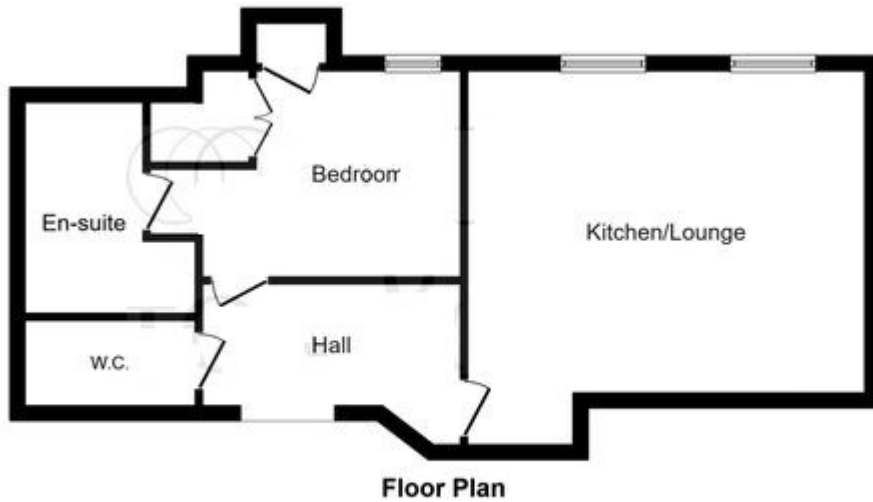
A rare opportunity to rent this immaculate 1 double bedroom stunning top floor flat, offered with no forward chain and is in excellent condition! The property benefits from having allocated parking and a separate WC as well as en-suite bathroom. The property further benefits from having a lift available within the block. Available January 2020.

Specification

One Double Bedroom
Ensuite Shower Room
Open Plan Kitchen/Living Area
Contemporary Fitted Kitchen

Allocated Parking
Close to Bournemouth Town Centre
Walking Distance of Bournemouth Beaches
Available January 2020

Apartment Size
419 Sq.FT (527 Sq.M)



Situation

Located in the highly desirable area of Bournemouth superbly situated a stone's throw away from its award-winning beaches, main line train station and close to Bournemouth Town Centre with its many shops bars and restaurants and ideally located on main public transport routes to Poole, Christchurch and surrounding areas.

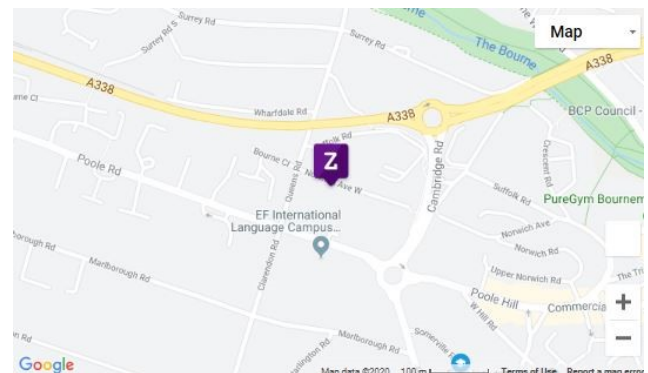
Local Authority and School catchments

Bournemouth Borough Council, Council Tax Band A

Asking Price

£750 PCM Deposit £865

Energy Efficiency Rating		
	Current	Potential
Very energy efficient - lower running costs		
(92 plus) A		
(81-91) B		
(69-80) C		
(55-68) D		
(39-54) E	65	65
(21-38) F		
(1-20) G		
Not energy efficient - higher running costs		



Disclaimer Property Details: These particulars, whilst believed to be accurate are set out as a general outline only for guidance and do not constitute any part of an offer or contract. Intending purchasers should not rely on them as statements or representation of fact, but must satisfy themselves by inspection or otherwise as to their accuracy. We have not carried out a detailed survey nor tested the services, appliances and specific fittings. Room sizes should not be relied upon for carpets and furnishings. The measurements given are approximate. No person in this firms' employment has the authority to make or give any representation or warranty in respect of the property.