



941 sq
ft



2



1



1

REDBRIK
ESTATE AGENTS

Helping you find
your home at...

Knivesmithgate, Chesterfield

£725 pcm

A rare opportunity has arisen to rent this brand new duplex apartment situated in the Town Centre:

- Two Bedroom Duplex Apartment
- Open Plan Living Area
- No Smokers, No pets
- Two Double Bedrooms
- Private Entrance With Secure Door Entry System
- Two Centre Location
- Available Now
- Brand New Conversion
- Parking Not Included
- Energy Rating TBC.

Recently renovated to a high standard throughout, this deceptively spacious apartment has been decorated all white with grey carpets throughout, contemporary styled accommodation across two levels, having its own private entrance hall on the ground floor. Ideally placed a stones throw from the many shops, bars and restaurants located in Chesterfield. The bedroom has two double bedrooms. Sharers considered.

Holding deposit applies on application equivalent to one weeks rent.

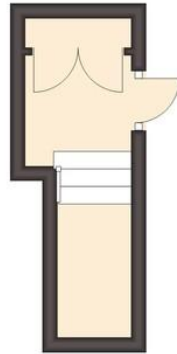




We endeavour to make these particulars as accurate as possible, but they should only be used as guidance and they do not constitute any part of the contract. All measurements are approximate and no guarantees are made to the services, heating systems, appliances (if any) or fittings as to their working order and no warranty can be given or implied.

Ground Floor

Approx. 5.2 sq. metres (56.1 sq. feet)



First Floor

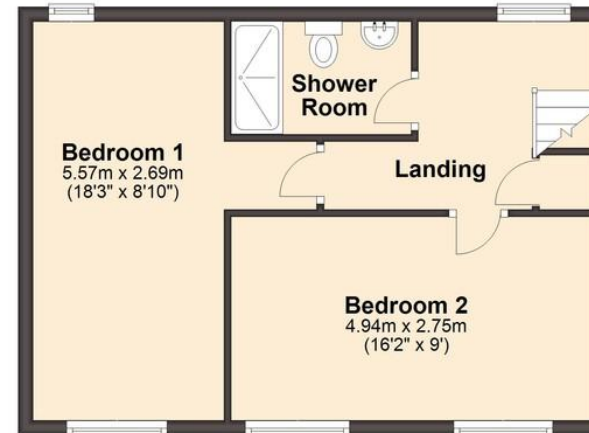
Approx. 41.1 sq. metres (442.6 sq. feet)



Total area: approx. 87.4 sq. metres (941.2 sq. feet)

Second Floor

Approx. 41.1 sq. metres (442.6 sq. feet)



You may download, store and use this material for your own personal use and research. You may not republish, retransmit, redistribute or otherwise make the material available to any party or make the same available on any website, on or off line service or hard copy without the website owner's express written consent. The website owner's copy right must remain on all reproductions of material taken from this website.

