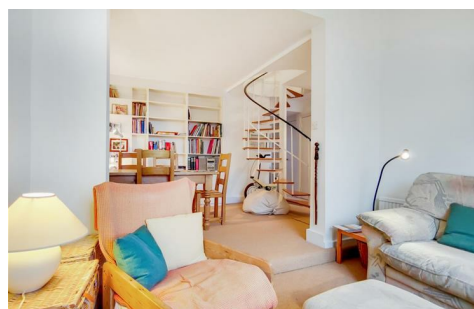
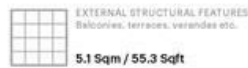
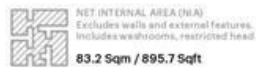
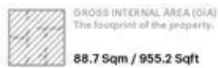
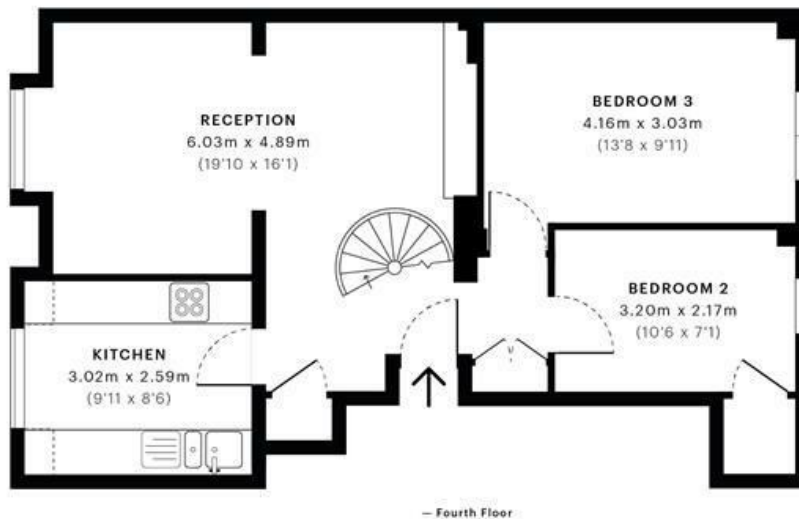


## Craven Hill Gardens, W2 3EA

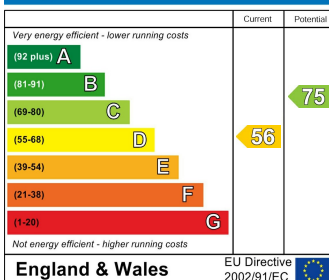
£1,150,000



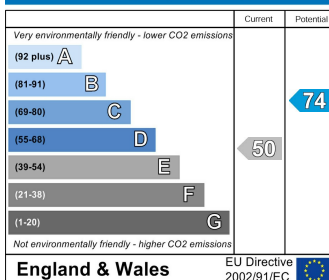
SOLE AGENT. We are delighted to offer for sale this bright apartment on sought after Craven Hill Gardens. 955 square feet and laid out over top 2 floors with lift. Positioned on this lovely quiet garden square, within a beautiful stucco fronted building, the property boasts high ceilings, reception room with dining space and separate kitchen. Craven Hill Gardens is superbly located in Prime Bayswater. There are a wealth of local amenities close by including the vast green open spaces of Hyde Park, excellent transport links located at Paddington, Bayswater and Lancaster Gate, whilst the Heathrow Express at Paddington is also with close proximity. Call now to arrange a viewing.



#### Energy Efficiency Rating



#### Environmental Impact (CO<sub>2</sub>) Rating



#### TENURE

**980 YEARS REMAINING**

**SERVICE CHARGE £5000 P.A.**

**GROUND RENT PEPPERCORN**