



Golding Way | Glemsford | CO10 7UT

£800 pcm

A two bedroom mid-terrace property is available this February. The property benefits from a living room and kitchen/diner on the ground floor, and two bedrooms and bathroom on the first floor. Outside the property benefits from front and rear gardens as well as an allocated parking space. Call now to secure a viewing.

- Available February
- Kitchen/Diner
- Two Bedrooms
- Off-Road Parking

ENTRANCE PORCH With radiator, double glazed window to side and door to lounge.

LOUNGE 12' 6" x 11' 4" into under stairs recess (3.81m x 3.45m) Stairs to first floor, double glazed window to front, radiator and door to kitchen.

FIRST FLOOR LANDING With radiator, two fitted storage units (currently used as bookcases). Access to roof space.

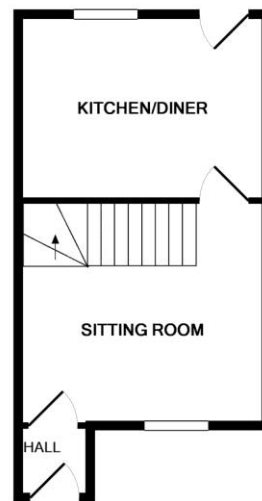
KITCHEN 12' 6" max x 9' 4" max (3.81m max x 2.84m max) With a range of fitted base units, hanging wall cupboards, worktops and drawers, tiled splashbacks. Inset stainless steel sink, built-in oven and hob with extractor over. Fixed breakfast bar, space for washing machine. Double glazed door to rear garden. Boiler.

BEDROOM 1 10' 5" x 8' (3.18m x 2.44m) Built-in wardrobe, radiator and double glazed window to front aspect.

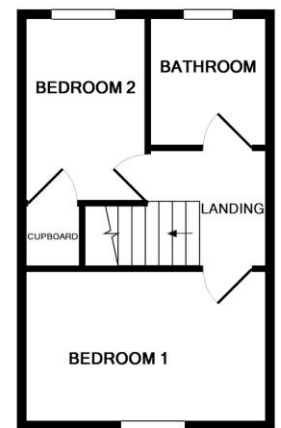
BEDROOM 2 9' 6" x 6' 2" (2.90m x 1.88m) Radiator, double glazed window to rear. Airing cupboard.

BATHROOM Pedestal wash basin, low level W.C., panel bath with shower over, radiator. Double glazed window to rear.

Local Authority – Babergh District Council
Council Tax Band – B
Post Code – CO10 7UT



GROUND FLOOR



1ST FLOOR

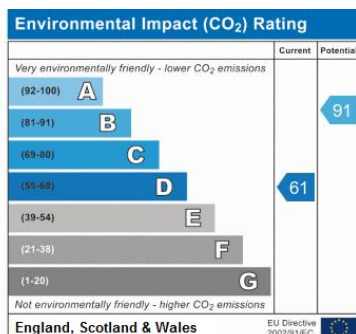
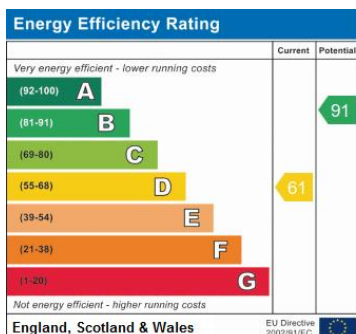


Contact Details

6 King Street, Sudbury, Suffolk, CO10 2EB

Tel: 01787 468400

Email: sudbury@bychoice.co.uk



Agents Note: Whilst every care has been taken to prepare these sales particulars, they are for guidance purposes only. All measurements are approximate and are for general guidance purposes only and whilst every care has been taken to ensure their accuracy, they should not be relied upon and potential buyers are advised to recheck the measurements

