



MILES ESTATE AGENTS

Stag Lodge , Combe Florey, Taunton,
Somerset TA4 3HZ



A rare opportunity to purchase this well presented and spacious, 4 double bedroom detached modern chalet style house with flexible accommodation and a lovely 2.5 acre parcel of stream bordered land just 100 metres away, in this most favoured village location within the Quantock Hills. Nestled between the West Somerset Railway and The Farmers Arms, the property has a good size garage and lots of parking. Early viewing highly recommended.





Features:

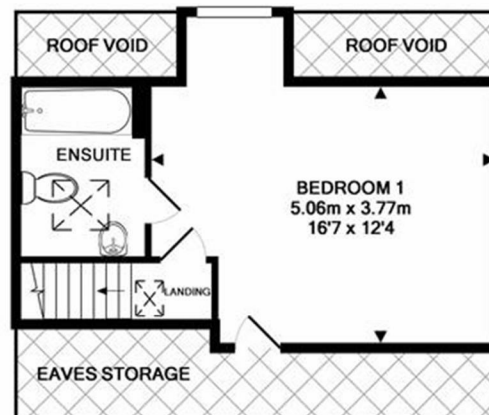
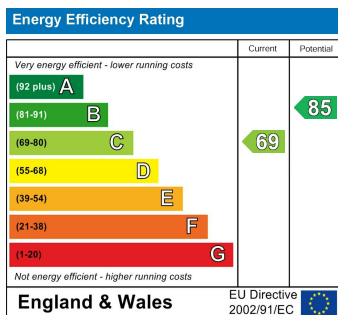
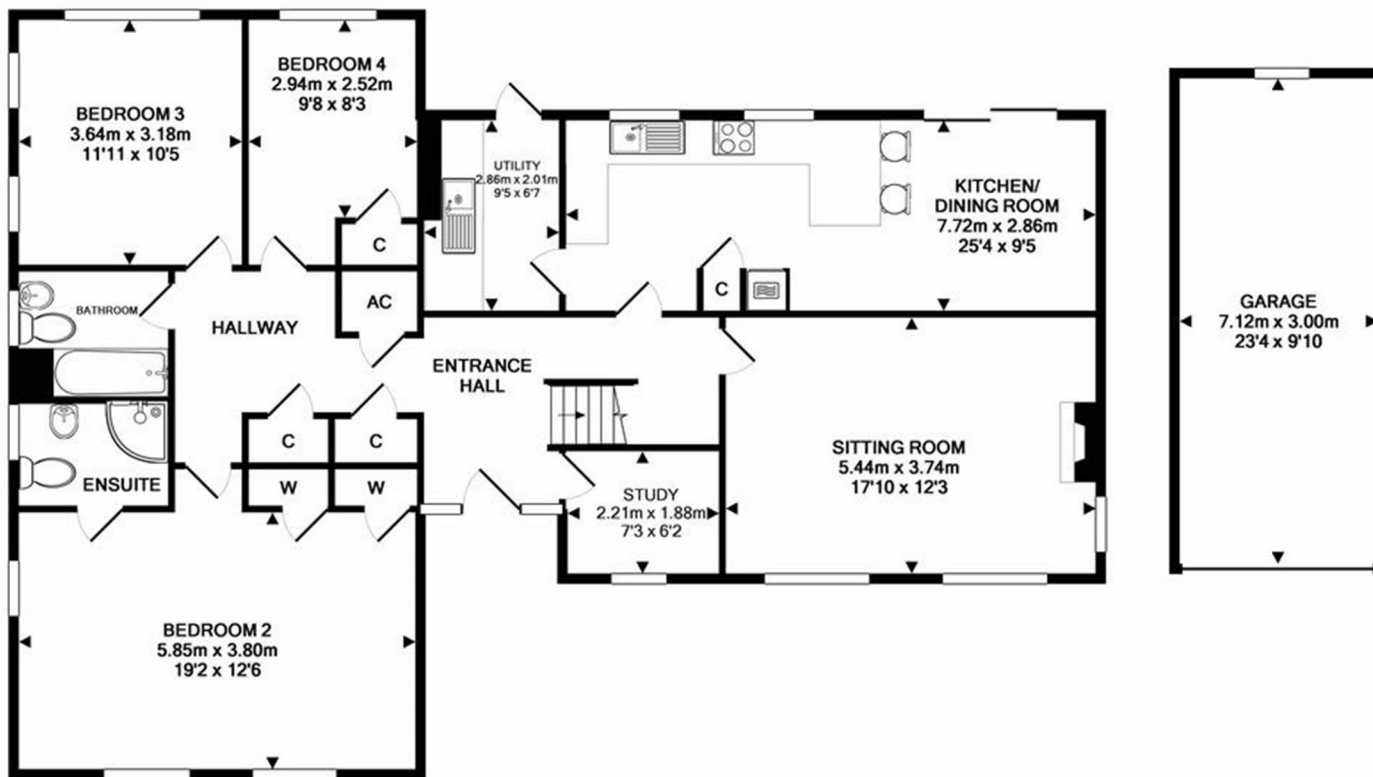
- Reception Hall
- Spacious Sitting Room with Woodburning Stove
- Superb Kitchen/Dining Room with Granite Worktops
- Study
- Utility Room
- 4 Double Bedrooms
- 2 En Suites
- Family Bathroom
- Garage and Off Road Parking for Several Cars
- Courtyard & Gardens to Front
- Enchanting Parcel of Land c 2.5 Acres with Stream, Stable Block and Woodland
- Council Tax Band F











TOTAL APPROX. FLOOR AREA 174.5 SQ.M. (1879 SQ.FT.)
Made with Metropix ©2020



Viewings strictly through the selling agents:

Miles Estate Agents

2 Piffin Lane, Bishops Lydeard, Taunton,
Somerset, TA4 3AS

Tel: 01823 470 500

lydeard@milesestateagents.co.uk

www.milesestateagents.co.uk

rightmove

Zoopla.co.uk

OnTheMarket.com



BEST
ESTATE AGENT GUIDE
2019 : EXCEPTIONAL

SALES

