



MUNKENBECK BUILDING, 5 HERMITAGE STREET
PADDINGTON, W2
£1,795 Per week Leasehold

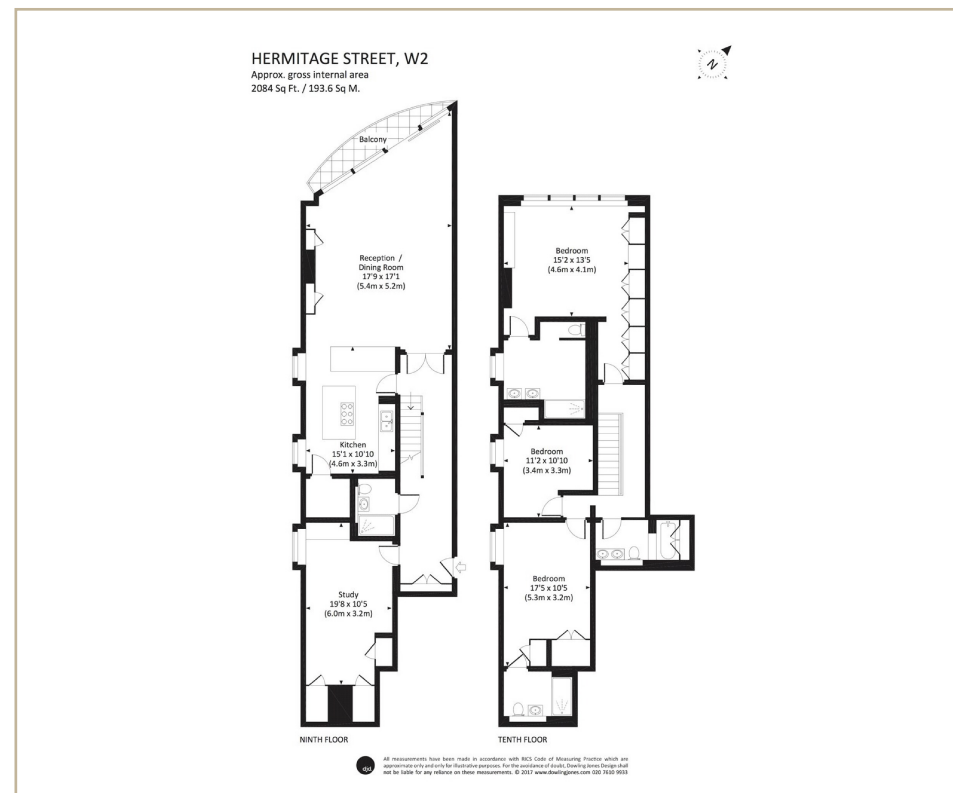
T. +44 (0) 20 7935 0011
E. enquire@napierwatt.co.uk
WWW.NAPIERWATT.CO.UK

NAPIER WATT
PROPERTY CONSULTANTS

Description

A fantastic ninth and tenth floor, duplex penthouse in a sought after building on the edge of Paddington Basin. The Munkenbeck and Marshall Penthouses have created a real sense of architectural scale, Double height, floor-to-ceiling windows in the reception room and a fabulous bespoke glass staircase flood the duplex with natural light. The property is currently arranged with upto 4 bedrooms, and 4 bathrooms.

The building benefits from 24 hour concierge and a private underground parking space available.



TERMS

Fees & Charges: Tenancies exceeding £100,000 Per annum £480 inc VAT, Tenancies where a company is a tenant £480 Inc VAT.

For Clarification we wish to inform prospective purchasers that we have prepared these sales particulars as a general guide. We have not carried out a survey, nor tested the services, appliances and specific fittings. Room sizes are approximate and rounded: they are taken between internal wall surfaces and therefore include cupboards/shelves, etc. Accordingly, they should not be relied upon for carpets and furnishings. Formal notice is given that all fixtures and fittings, carpeting, curtains/blinds and kitchen equipment, whether fitted or not, are deemed to be removable by the vendor unless specifically itemised within these sales particulars.

T. +44 (0) 20 7935 0011
E. enquire@napierwatt.co.uk
WWW.NAPIERWATT.CO.UK

NAPIER WATT
PROPERTY CONSULTANTS