

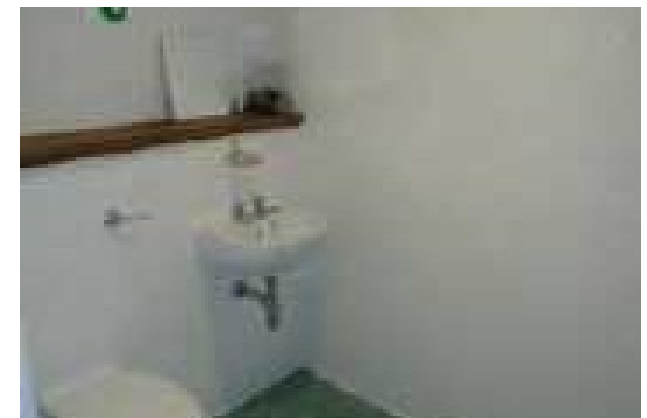


jordanfishwick

MANCHESTER
Albion Works



Albion Works, Manchester M4 7AJ Price £190,000



The Property

Mortgage Buyers Welcome. Video Tour... <https://youtu.be/wYc63hHh0dA>

This excellent sized two bedroom first floor apartment is located in the converted mill development Albion Works. Immaculate condition throughout and benefiting from double height ceilings, accommodation comprises of entrance hall, large living area with laminate flooring and open to the kitchen with quality units with oven, hob, washing machine and dishwasher. Master bedroom with walk in shower/wet room, second double bedroom and three piece bathroom suite with shower over and tiled floors and walls. Ideally located with new tram stop adjacent development and short walking

distance to Piccadilly/Northern Quarter. No Chain. No Parking

Directions

Albion Works is situated just off Great Ancoats Street next to the Ashton Canal. The Northern Quarter and Piccadilly train station is only a short stroll away. Easy access to the Manchester Ring Road for those wanting to commute out of the city centre.

- Conversion Apartment
- Two Double Bedrooms
- High Ceilings
- Immaculate Condition
- Wet Room To Master
- No Chain
- Tram Stop Outside
- Short Walk To Piccadilly
- No Parking

Postcode - M4 7AJ

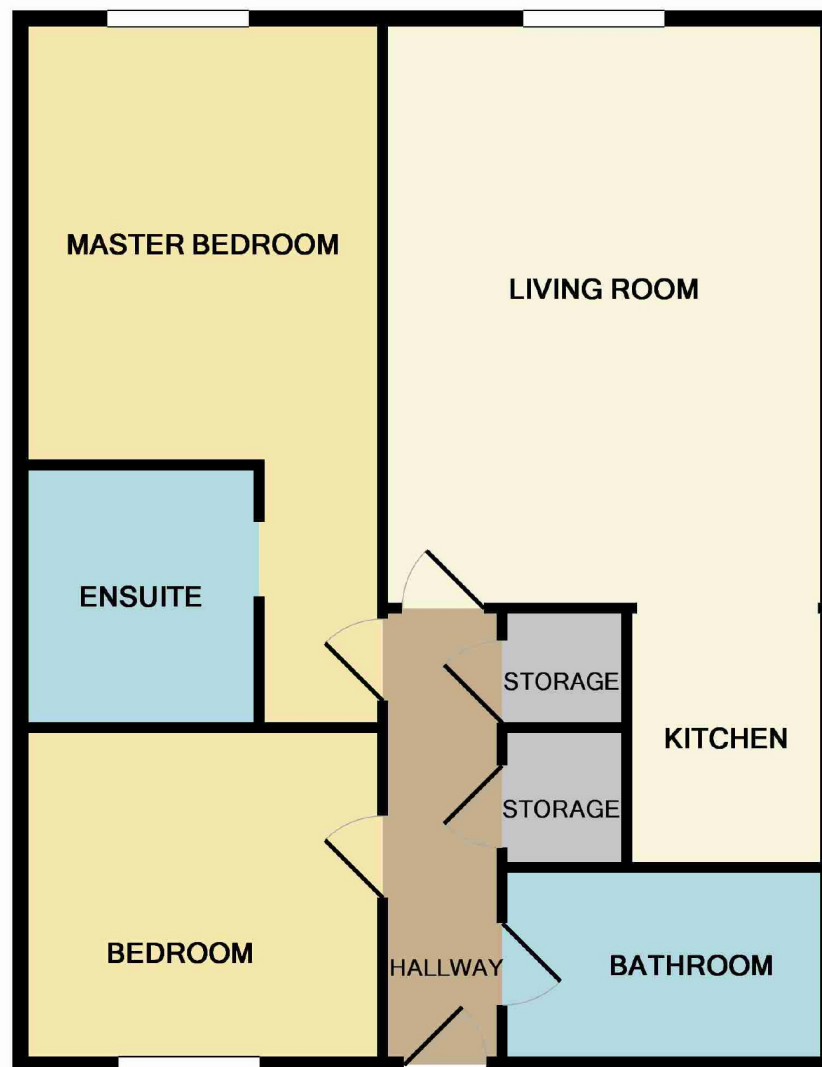
EPC Rating - C

Floor Area - sq ft

Local Authority - Manchester City Council

Council Tax - Band C





Measurements are approximate. Not to scale. Illustrative purposes only
Made with Metropix ©2013



These particulars are believed to be accurate but they are not guaranteed and do not form a contract. Neither Jordan Fishwick nor the vendor or lessor accept any responsibility in respect of these particulars, which are not intended to be statements or representations of fact and any intending purchaser or lessee must satisfy himself by inspection or otherwise as to the correctness of each of the statements contained in these particulars. Any floorplans on this brochure are for illustrative purposes only and are not necessarily to scale.

Offices also at:
Chorlton | Didsbury | Disley | Glossop | Hale | Macclesfield | Manchester | Sale | Wilmslow | Withington

68 The Arches, Whitworth Street West, Manchester, M1

0161 833 9499

manchester@jordanfishwick.co.uk
www.jordanfishwick.co.uk