



High Meadows, Stoke Heath, Bromsgrove, B60 3QR | Offers Over £350,000
Four Bedroom Detached House

Features:

- Four Bedrooms
- Modern Bathroom and Downstairs WC
- Lounge, Snug and Conservatory
- Newly Fitted Kitchen/Family Room
- Rear Garden
- 2x Driveways

Summary:

A beautifully presented four bedroom detached house, offered with stunning and newly fitted kitchen/family room and family bathroom, a conservatory and off road parking, situated in the popular area of Stoke Heath, Bromsgrove.

Description:

The accommodation, in brief, features:- 2x Driveways, Hall, Downstairs WC, Lounge, Stunning Kitchen/Family Room with Breakfast Island, Granite Work Surfaces and Integrated Dishwasher, Microwave/Oven, Oven, Gas Hob and Extractor, Utility Room, Conservatory, Snug, Stairs to First Floor Landing, Master Bedroom, Double Bedroom Two, Bedrooms Three and Four and Modern Family Bathroom with Jacuzzi Bath with Shower over.

Outside:

Outside, the property enjoys a rear garden with a paved patio, lawn with mature trees and fenced boundaries.

Location:

This property is situated in a quiet no-through road, in the well-established and sought after location of Stoke Heath, ideally positioned with south Bromsgrove excellent school catchment and surrounding amenities. The nearby town centre of Bromsgrove offers the Artrix Art and Entertainment Centre, the new leisure centre and a range of eateries, supermarkets as well as doctors, dentists, Health Centre and professional services. In addition, there is easy access to the motorway networks (M5 and M42).



Room Dimensions:

Hall

Downstairs WC

5' 2" x 3' 4" (1.59m x 1.03m)

Lounge:

12' 4" x 13' 2" (3.77m x 4.02m) max

Kitchen/Family Room:

24' 8" x 13' 3" (7.54m x 4.04m) max

Conservatory:

7' 7" x 12' 0" (2.33m x 3.68m)

Utility Room:

7' 5" x 12' 6" (2.28m x 3.83m)

Snug:

8' 5" x 16' 2" (2.57m x 4.95m) max

Stairs To First Floor Landing

Master Bedroom:

12' 8" x 8' 11" (3.88m x 2.73m)

Bedroom Two:

13' 2" x 9' 0" (4.03m x 2.76m)

Bedroom Three:

8' 11" x 9' 2" (2.74m x 2.80m) max

Bedroom Four:

9' 7" x 6' 4" (2.94m x 1.95m) max

Bathroom:

7' 5" x 6' 4" (2.27m x 1.94m)

EPC: D

Council Tax Band: D

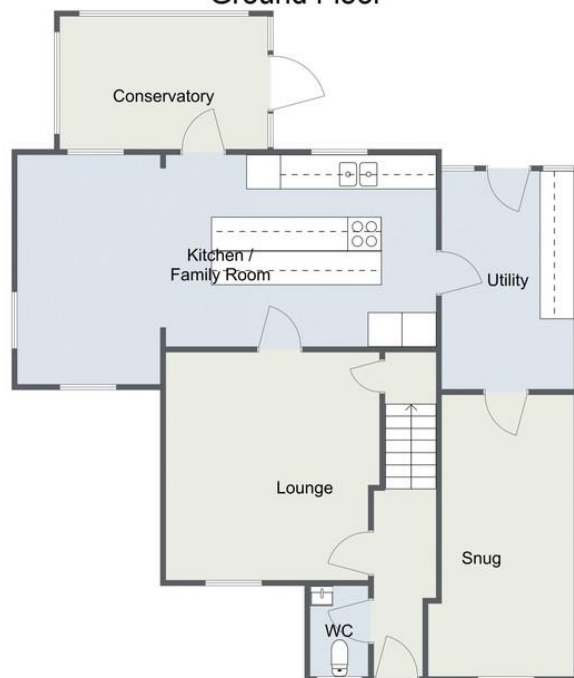
Tenure: Freehold

For more information on High Meadows or to arrange a viewing, please call the Bromsgrove Office on 01527 872 479



High Meadows, Stoke Heath

Ground Floor



First Floor



Total Area Approx
128.3 sq m
1381 sq ft

For illustrative purposes only. Decorative finishes, fixtures & fittings do not represent the current state of the property. Measurements are approximate & not to scale. Floor Plans made using RoomSketcher.

High Meadows, Stoke Heath

Ground Floor



First Floor



Total Area Approx
128.3 sq m
1381 sq ft

For illustrative purposes only. Decorative finishes, fixtures & fittings do not represent the current state of the property. Measurements are approximate & not to scale. Floor Plans made using RoomSketcher.

Please read the following: These particulars are for general guidance only and are based on information supplied and approved by the seller. Complete accuracy cannot be guaranteed and may be subject to errors and/or omissions. They do not constitute a contract or part of a contract in any way. We are not surveyors or conveyancing experts therefore we cannot and do not comment on the condition, issues relating to title or other legal issues that may affect this property. Interested parties should employ their own professionals to make enquiries before carrying out any transactional decisions. Photographs are provided for illustrative purposes only and the items shown in these are not necessarily included in the sale, unless specifically stated. The mention of any fixtures, fittings and/or appliances does not imply that they are in full efficient working order and they have not been tested. All dimensions are approximate. We are not liable for any loss arising from the use of these details.