



926 sq  
ft



2



1



2

REDBRIK  
ESTATE AGENTS 

Helping you find  
your home at...

Ringwood Avenue, Chesterfield  
Guide Price £220,000 to £230,000



Guide Price £220,000 - £230,000. A two bedroom detached bungalow located on fantastic plot in the sought after suburb of Newbold.

- Two Bedroom Detached Bungalow
- Open Plan Kitchen/ Diner
- Spacious Bay Window Lounge
- No Onward Chain
- Ideally Located
- Low Maintenance Enclosed Rear Garden
- Off-Street Parking For Numerous Cars & Garage
- Fitted Bathroom With Three Piece Suite
- Conservatory, GCH & uPVC Double Glazing
- Energy Rating TBC - Freehold.





The property provides in excess of 900 sq. ft of flexible accommodation with further scope for a prospective purchaser to modernise and re-configure to their individual requirements or extend (subject to gaining the relevant permissions) Ideally placed for local amenities, schools, shops, bus services and transport links the property is available with no onward chain...

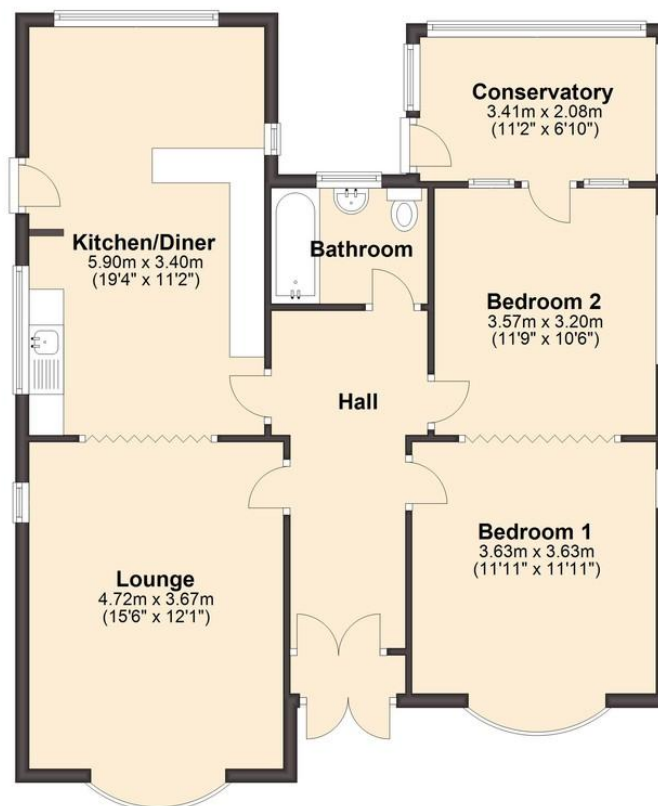






### Ground Floor

Approx. 86.1 sq. metres (926.6 sq. feet)



Total area: approx. 86.1 sq. metres (926.6 sq. feet)

We endeavour to make these particulars as accurate as possible, but they should only be used as guidance and they do not constitute any part of the contract. All measurements are approximate and no guarantees are made to the services, heating systems, appliances (if any) or fittings as to their working order and no warranty can be given or implied.

You may download, store and use this material for your own personal use and research. You may not republish, retransmit, redistribute or otherwise make the material available to any party or make the same available on any website, on or offline service or hard copy without the website owner's express written consent. The website owner's copy right must remain on all reproductions of material taken from this website.