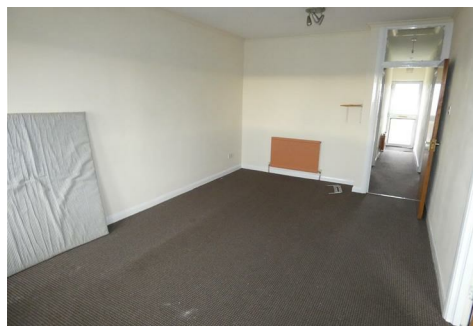




JACKSON O'ROURKE

ESTATE AGENTS



**15a Shifford Crescent  
Maidenhead, Berkshire SL6 7UA**

**£925**

A spacious and unfurnished two bedroom first floor flat, perfectly located with easy reach of Maidenhead Town Centre. Offering two double bedrooms, a large living/dining room, a kitchen with appliances, a bathroom suite, gas central heating, double glazed windows and plenty of parking to the front. The property is within walking distance of shops and supermarkets, as well as being in the catchment of popular schools and within easy reach of Maidenhead train station (main Paddington line). Available immediately. Call now to arrange a viewing.

## 15a Shifford Crescent, Maidenhead, Berkshire SL6 7UA



Energy Efficiency Rating		
	Current	Potential
Very energy efficient - lower running costs		
(92 plus) A		
(81-91) B		
(69-80) C		
(55-68) D		
(39-54) E		
(21-38) F		
(1-20) G		
Not energy efficient - higher running costs		
England & Wales		
EU Directive 2002/91/EC		

Environmental Impact (CO <sub>2</sub> ) Rating		
	Current	Potential
Very environmentally friendly - lower CO <sub>2</sub> emissions		
(92 plus) A		
(81-91) B		
(69-80) C		
(55-68) D		
(39-54) E		
(21-38) F		
(1-20) G		
Not environmentally friendly - higher CO <sub>2</sub> emissions		
England & Wales		
EU Directive 2002/91/EC		

Please Note: Jackson O'Rourke Estate Agents have prepared these sale particulars as a general guide. We have not carried out a detailed survey, nor tested the service appliances or specific fittings. Room sizes should not be relied upon for carpets and furnishings etc.

We believed these particulars to be correct however they are not guaranteed by the vendor or ourselves.. Prospective purchasers must satisfy themselves by inspection or otherwise as to the correctness of each statement contained in these particulars.