



Palace Street, Westminster
London SW1E

GARTONJONES.COM



Palace Street, Westminster
London, SW1E

GARTON JONES.COM

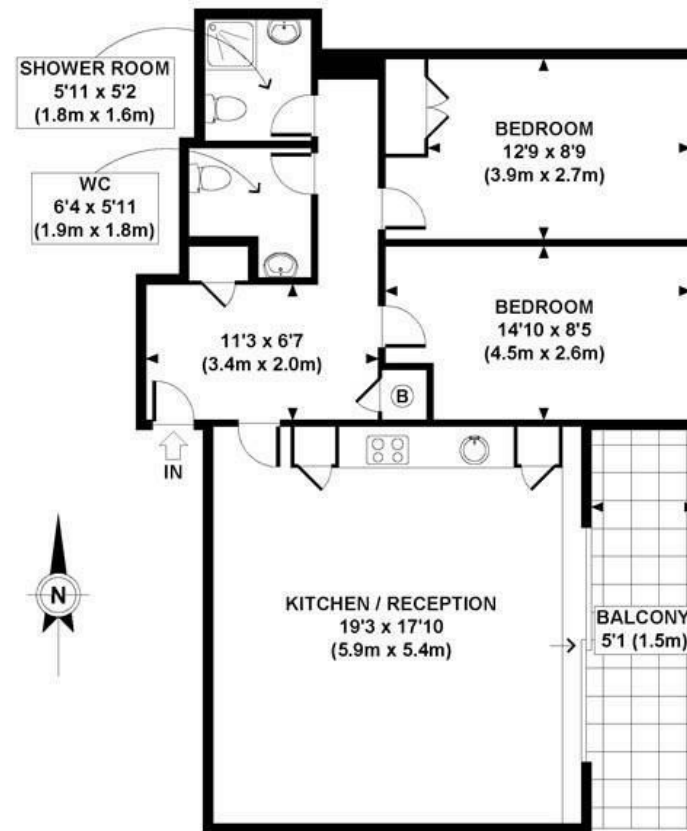
49 Marsham Street Lettings:
London +44 (0) 20 7340 0480
SW1P 3DP westminster@gartonjones.com
www.gartonjones.com

£800 Per Week

A bright and spacious 2 bedroom apartment available to let in this popular modern development located in the heart of Victoria. The property is furnished and further comprises of an open plan reception room with floor to ceiling windows accessing a large private balcony with fantastic views, there is an integrated kitchen, two double bedrooms with the master benefitting from fitted wardrobes, a modern separate shower room and a further separate guest cloakroom. The View has an impressive entrance area with a 24 hour concierge and lift access to all floors. Palace Street is centrally located and is just a short distance away from Whitehall, The Houses of Parliament, Westminster Abbey and Buckingham Palace. The transport links of St James's Park, Westminster and Victoria which are all just a stones throw away as well as a selection of bus services to The City and The West End. In the surrounding area there is a choice from a variety of amenities that include a Little Waitrose, a Curzon Cinema and a selection of many new restaurants to compliment the selection of existing ones which include Aster, M Victoria, The Ivy Victoria, Flight Club Victoria and many more

- 2 Bedrooms
- Open Plan Reception Room
- Integrated Kitchen
- Large Private Balcony
- Bathroom & Guest Cloakroom
- 24 Hour Concierge
- Lift
- Furnished
- Moments from Victoria & St James's Park Transport Links
- Many Shops, Bars & Restaurants on the Doorstep





GROSS INTERNAL
FLOOR AREA 795 SQ FT

APPROX. GROSS INTERNAL FLOOR AREA 795 SQ FT / 74 SQ M
GCGJW - 220509 Copyright photoplan.co.uk

Floorplans are for identification and guideline purposes only, not to scale.
Compliant with RICS code of measuring practice.

