



3 BASING BARNS

Sages Lane, Privett, Hampshire, GU34 3QA

TO LET

£1,350 pcm

BCM

3 Basing Barns

Sages Lane, Privett, Hampshire, GU34 3QA

Petersfield 8 miles | Alton 10 miles | Winchester 14 miles | London Waterloo from
Petersfield Station – 80 minutes | Mileages and times approximate

2 Bedrooms

A spacious semi-detached brick and flint converted barn.

THE PROPERTY

A spacious semi-detached brick and flint converted barn. Well presented with neutral decoration. The development is set in landscaped formal courtyards with communal lawns which are maintained by the estate.

The property briefly comprises hallway, modern fitted kitchen/ breakfast room with electric hob and oven, space and plumbing for white goods. Sitting room with vaulted ceiling and exposed beams. Double doors leading out onto secluded patio area. Double bedroom. Family bathroom. Second bedroom on the first floor with en suite bathroom.

No 3 Basing Barns is within easy reach of Petersfield, Alton and Winchester, all with mainline stations to London. There are excellent schools for all ages nearby with a Montessori nursery school in the village. Privett is a popular village and the development is surrounded by idyllic countryside which is mainly designated as an Area of Outstanding Natural Beauty.

ADDITIONAL INFORMATION

Services

Mains electricity and water.
Private drainage £15.00 per month.
Electric heating
Ultrafast Full Fibre Broadband available (Openreach)

Local Authority

East Hampshire District Council, band D

EPC

E 47

Pets

Not pets due to the communal nature of the outside area.

Deposit

Holding deposit £311.00

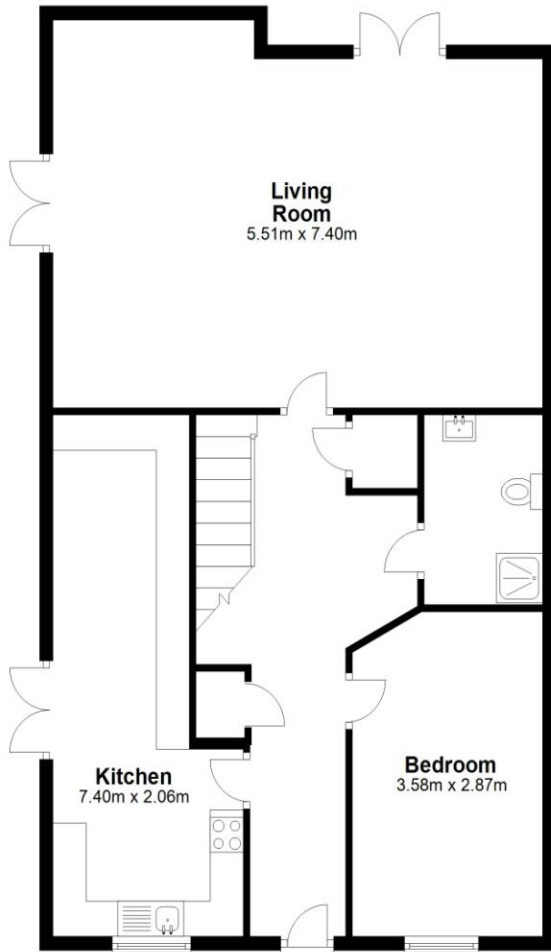
Total deposit £1,557.00

Directions

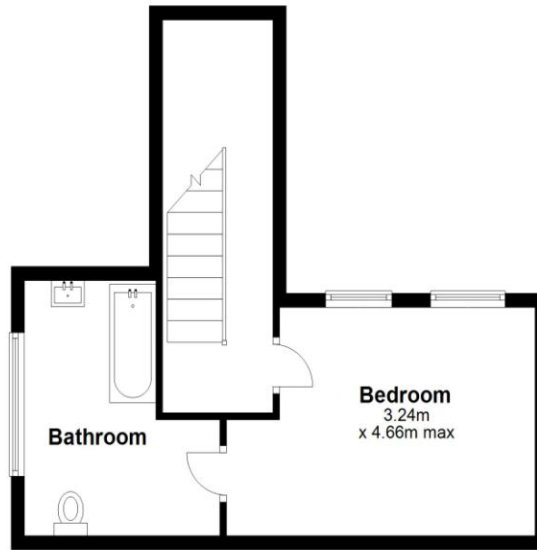
From the M3, exit at junction A272 towards Petersfield. Continue along the A272 until the traffic lights and cross roads at West Meon. Turn left northbound towards Alton on the A32. Immediately after the Angel pub on the left-hand side, turn right at the crossroads into Sages Lane. Turn left as directed towards Basing Barns.



Ground Floor
Approx. 93.7 sq. metres



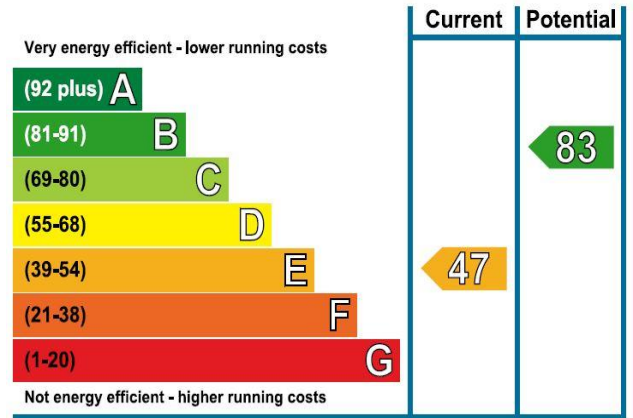
First Floor
Approx. 32.6 sq. metres



Total area: approx. 126.3 sq. metres
3 Basing Barns



Energy Efficiency Rating



WINCHESTER

BCM, The Old Dairy, Winchester Hill,
Sutton Scotney, Winchester, Hampshire SO21 3NZ

T 01962 763 900 E info@bcm.co.uk

ISLE OF WIGHT

BCM, Red Barn, Cheeks Farm,
Merstone Lane, Merstone, Isle of Wight PO30 3DE

01983 828 805 E iow@bcm.co.uk

OXFORD

BCM, Ouseley Barn Farm, Ipsden,
Wallingford, Oxfordshire OX10 6AR

T 01865 817 105 E oxford@bcm.co.uk



rural property services