



**Prudhoe Terrace | Tynemouth | NE30 4EZ**

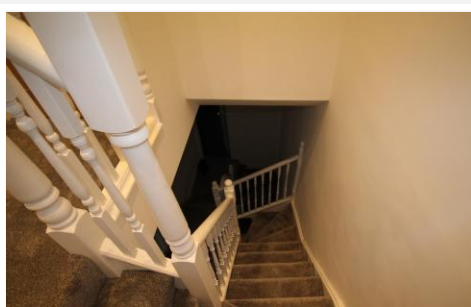
- Four Bedrooms
- Upper Maisonette
- Fully Refurbished Throughout
- Central Tynemouth
- Gas Central Heating
- Viewing Highly Recommended

**For Sale**

**£289,950**

Offers In Region Of

**Energy Efficiency Rating D.**



## Viewing Arrangements

Strictly by appointment

## Contact Details

www.safeandsecureproperties.co.uk  
24-25 Westbourne Terrace  
Houghton le Spring  
DH4 4QT

## Property Description

Safe and Secure are delighted to welcome to the market this Four bedroom maisonette in a prestigious position in Tynemouth.

This fully refurbished property is completed to a very high specification throughout. Internal viewing is essential in order to appreciate the size and standard of accommodation on offer.

ENTRANCE HALL Wooden entrance door leading to communal hallway.

ENTRANCE Composite entrance door with stairs to first floor.

KITCHEN 13' 3" x 10' 7" (4.05m x 3.25m) Fitted with a modern range of wall and base units with high quality worktops, single drainer sink unit with mixer tap, built in electric oven, electric hob with extractor over, tiled floor, radiator and double glazed window to rear.

LOUNGE 14' 5" x 13' 6" (4.40m x 4.13m) Doubled glazed windows to front, radiator.

MASTER BEDROOM 14' 7" x 13' 6" (4.46m x 4.13m) Double glazed window to rear, radiator.

BEDROOM FOUR 10' 7" x 7' 5" (3.24m x 2.28m) Double glazed window, radiator.

BATHROOM White three piece suite comprising of panelled bath with shower over, vanity unit wash basin, low level wc, tiled walls and floor, heated towel rail and double glazed window to rear.

INNER HALLWAY Radiator, door to rear entrance with external stairs to yard.

STAIRS TO SECOND FLOOR

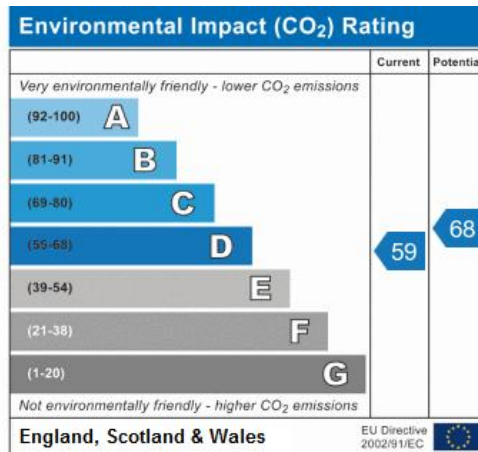
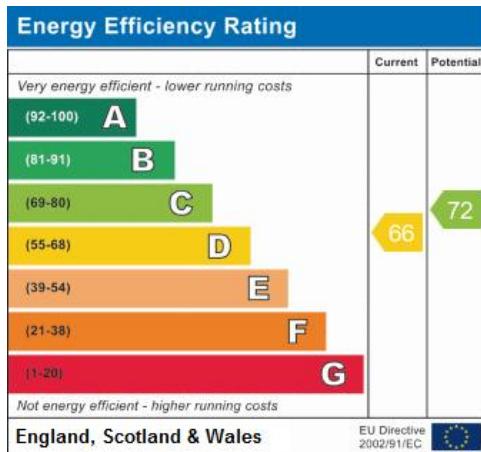
BEDROOM THREE 10' 9" x 12' 0" (3.30m x 3.66m) Two velux windows, radiator.

BEDROOM TWO 9' 4" x 19' 8" (2.87m x 6.01m) Velux window, radiator.

SHOWER ROOM White three piece suite comprising of step in shower, vanity unit wash basin, low level wc, tiled walls and floor, velux window, heated towel rail

See full details at: [www.safeandsecureproperties.co.uk](http://www.safeandsecureproperties.co.uk)

# EPC Rating



## Floor Plan (if required)

Awaiting  
Image

See larger images at: [www.safeandsecureproperties.co.uk](http://www.safeandsecureproperties.co.uk)

Contact Lisa or Debbie on **0191 385 4477**

[lisa@safeandsecureproperties.co.uk](mailto:lisa@safeandsecureproperties.co.uk)

[debbie@safeandsecureproperties.co.uk](mailto:debbie@safeandsecureproperties.co.uk)

Agents Note: Whilst every care has been taken to prepare these sales particulars, they are for guidance purposes only. All measurements are approximate are for general guidance purposes only and whilst every care has been taken to ensure their accuracy, they should not be relied upon and potential buyers are advised to recheck the measurements.